



**THE FUTURE IS NOW**

**OVERLOOK FOUNDATION**

**ANNUAL REPORT 2024**

On the cover: Our youth are our future, supported by a newly expanded and renovated Overlook that boasts world-class care and state-of-the-art technology.



**The Future is Now** was produced by Overlook Foundation. Principal writing by Renée Tesauro, RCB Communications. Graphic design and principal photography by Kathy Cacicedo.



## Table of Contents

A Message from Overlook	2
Welcoming the Next Generation	4
Robotics in the OR	6
Neurosurgery Gets LITT	8
In Praise of Palliative Care and Healthcare Ethics	9
The Future of Emergency Psychiatric Care	10
Navigating a Full Life for MS Patients	12
Making Wishes Come True	14
EveryBODYmoves Mobilizes Inpatients	15
“All That Glitters” Gala Dazzles	16
Giving at a Glance	18
Honor Roll of Donors	19
Overlook at a Glance	28
Clinical Leaders Chart Bright Future	30
Current Leadership	31
Friends Remembered	32

# A Message from Overlook Medical Center and Overlook Foundation



Because of you, a medical center  
ranked among America's 50 Best  
is right here, right now!

A few short years ago, we asked you — our family of donors — to invest in the future of healthcare in our community by joining OverLook Ahead, an \$82.5 million campaign to fund a multi-phase expansion and upgrade of nearly 90 percent of Overlook's patient care areas. Thanks to your generous support, the future is now!

Contributions to the OverLook Ahead campaign have already funded such major campus enhancement projects as the new Hersh Children's Center, the Bouras Emergency Department entrance, waiting room, and triage spaces, and the expansion and renovation of the John E. Reeves Same Day Surgery Center. During the past year, upgrades to our facilities, technology, and programs continued at a steady pace, and now we proudly share details of some of those enhancements in our 2024 Annual Report – The Future is Now.

In the following pages, we'll take a closer look at the spacious, newly reconfigured and expanded Frank and Mimi Walsh Maternity Center, which is elevating the standard of maternity care for future generations of Overlook patients. We'll introduce you to the innovative EmPATH unit, which is redefining emergency psychiatric care.

You'll meet a young mother, diagnosed with multiple sclerosis, who is leading an active fulfilled life thanks to the expert compassionate care she receives at Atlantic Health System's new Multiple Sclerosis Comprehensive Care Center in Bridgewater. You'll learn about Overlook's latest generation of robotic systems that are dramatically improving the precision and outcomes of minimally invasive surgery, joint replacement, and complex spine surgery, as well as the diagnosis and treatment of lung cancer. You will also gain insight into a revolutionary minimally invasive technique, combining lasers with heat, that allows neurosurgeons to pinpoint and destroy unhealthy tissue in patients with brain tumors and epilepsy.

As many of you know, the hallmark of Overlook's healing culture is a patient experience that is equal parts high tech and high touch. Here, we'll showcase EveryBODYmoves, a hospital-wide campaign to increase inpatient mobilization and improve outcomes following discharge. We'll also illuminate the integral role of palliative care and healthcare ethics in assisting patients and families coping with the physical, psychological, social, and spiritual issues surrounding a life-limiting illness.

Thank you for your investment in Overlook's future and your generous support in 2024. Gifts and pledges to our semiannual appeals, capital campaigns, and special events from you and other caring individuals, corporations, foundations, and community organizations amounted to more than \$10.3 million.

Because of you, a medical center ranked among America's 50 Best is right here, right now!

With sincere appreciation for your generosity.

Clelia Biamonti, Ph.D.  
Chief Philanthropy Officer  
Overlook Foundation

Elizabeth Peck  
Board Chair  
Overlook Foundation

Stephanie Schwartz  
President  
Overlook Medical Center



# Welcoming The NEXT Generation

FRANK AND MIMI WALSH  
MATERNITY CENTER

Every year, Overlook's Frank and Mimi Walsh Maternity Center welcomes more than 2,000 babies into the world. Now, thanks to the OverLook Ahead Campaign, our tiniest patients and their families are enjoying an even warmer welcome in a completely renovated and upgraded environment that raises the bar for clinical care and patient comfort throughout the birth experience.

Megan Rosenstein, M.D.,  
Uchenna 'Chris' Nwobu, M.D.,  
Isabel Pierre-Louis, R.N.

"Overlook has received recognition locally and nationally for excellence in perinatal care. It's wonderful to now have a physical facility that reflects the high quality of care we've been providing for decades," says Megan Rosenstein, M.D., director of obstetric anesthesia and associate chief medical officer.

For both patients and staff, the elevated level of care begins the moment expectant parents step off the elevator and are welcomed into the new triage unit for immediate assessment. "It's similar to an office visit," explains Dr. Rosenstein. "There are four private rooms where the obstetric team works with patients to establish a mutual plan of care. That could mean admission, returning home for expectant management, or remaining in this comfortable space for a period of observation with the labor and delivery team.

"The beauty of the triage unit," she adds, "is that it's also equipped to handle deliveries or emergency situations that may arise. Patients arriving in active labor can deliver there. Those needing an urgent C-section can be transitioned quickly into one of two spacious new operating rooms just steps away. The OR suite is additionally outfitted with a neonatal support room to provide advanced care to Overlook's tiniest patients."

Eight new all-private labor rooms feature spacious bathrooms with showers, rocking chairs, birthing balls, hydrotherapy, state-of-the-art epidural equipment, and enhanced bedside and remote monitoring. Expanded capability for wireless maternal and fetal monitoring enhances patient safety so that laboring moms can move about more freely.



Mimi and Frank Walsh (third and fourth from left) were joined by members of the Overlook team when they visited the under-renovation center named for them.

"The new layout allows our team to respond quickly when we need to," says Labor and Delivery Nurse Manager Isabel Pierre-Louis, BSN, RNC-OB. "The reconfigured nurses' station allows us to see and hear all patients in both the labor and recovery wings and it is seconds away from the obstetrics hospitalist and anesthesiologist, who are on site 24/7."

Mothers whose babies require extra medical attention have the added assurance of knowing that the 15-bed Level III neonatal intensive care unit (NICU) is now located adjacent to the Mother/Baby Unit. And, while many mothers enjoy rooming in with their newborns, those needing extra rest can rest assured knowing that their babies are safely nestled in the 18-bed Summit Foundation Nursery.

"It's a five-star facility," notes Uchenna 'Chris' Nwobu, M.D., FACOG, interim chairperson, obstetrics and gynecology. "The 36 all-private postpartum rooms in The Healthcare Foundation of NJ Newborn & Family Unit are big and beautiful with spacious bathrooms, vanities, rocking chairs, comfortable overnight accommodations for partners, and plenty of room for visiting family members.

"Women are at their most vulnerable immediately following childbirth. The added privacy and comfort will help improve their recovery, facilitate family bonding, and ease the transition from hospital to home."

"This was built to welcome families," sums up Dr. Rosenstein. "And this expands our ability to provide outstanding care to a growing number of families in our region."

**Want to explore a non-interventional birthing experience?  
Atlantic Medical Group-Women's Health has opened a midwifery practice  
in Overlook's MAC II Building, which collaborates with  
maternity center staff to meet expectant patients' needs.**



# ROBOTICS in the OR

More than a decade ago, Overlook led the way in adopting advanced minimally invasive surgery techniques when it acquired one of the state's first daVinci surgical robots. Today, the commitment to deliver the highest standard of patient care continues with the latest generation of robotic systems, such as the daVinci Xi and the daVinci 5, ExcelsiusGPS™, ION robotic bronchoscopy, and the Mako™ robotic arm for total knee, total hip, or partial knee replacement.

## daVinci Robots — Artistry in Motion

With instruments that mimic the movements of the human wrist and 3D high-definition views of the surgical area, the daVinci surgical system helps surgeons operate via tiny incisions with enhanced vision, precision, dexterity, and control. Offering numerous advantages over open surgery – including less blood loss and pain, a shorter hospital stay, and quicker recovery – Overlook's two daVinci Xi surgical systems are routinely used to facilitate minimally invasive surgery in specialties such as gynecology, gynecologic oncology, urology, colon and rectal surgery, bariatric surgery and now even complex abdominal wall hernia repairs. This year, Overlook will deploy a third robot – the latest generation, state-of-the-art daVinci 5.

"Robotics allow us to expand the capabilities of minimally invasive surgery, particularly in complex cases and tight spaces," comments Muhammad Feteiha, M.D., chair of the Department of Surgery at Overlook. "It provides an extra layer of accuracy, precision, and dexterity to the surgeon's skills, leading to improved patient outcomes in many specialty areas."



Kim Ashayeri, M.D.

## ExcelsiusGPS™ — A Revolutionary Approach to Spine Surgery

Overlook has optimized spinal surgery for both surgeons and patients with ExcelsiusGPS, a robotic system that increases the accuracy of aligning and placing implants. Surgeons develop a 3-D pre-procedure plan that allows them to customize size, positioning, and alignment. The plan is used to guide the rigid robotic arm to a specific region of the patient's spine, ensuring safe and accurate placement of spinal hardware. Benefits for patients include less blood loss, shorter hospital stays, fewer complications, and more predictable outcomes.

"This revolutionizes the way we think about and approach spine surgery," observes Kimberly Ashayeri, M.D., a neurosurgeon with Atlantic Brain and Spine, who did her fellowship training with the inventor of the robot and was an early adopter of the technology prior to joining Overlook in August. "It's safer for patients and allows us to do things in a much more minimally invasive fashion. It also significantly reduces radiation exposure by eliminating the need for multiple x-rays."

## ION Robotic Bronchoscopy — Conquering Lung Cancer

The deadliest cancer in the U.S., lung cancer has traditionally been difficult to diagnose and treat in its earliest stages. That's because 70% of suspicious nodules reside in narrow, far-out pathways in the peripheral lung, making them difficult to reach and biopsy. The ION robotic bronchoscopy system – from the makers of the daVinci surgical system – changes all that. Following a pre-planned path created from the patient's CT scan, surgeons can guide ION's ultrathin, flexible catheter to nodules less than a centimeter wide in all 18 segments of the lungs. When the catheter is in position, the surgeon can biopsy the nodule; and, if necessary, deliver therapy and ablate the tumor with the Aliya™ Pulsed Electric Field (PEF) Energy Platform – a minimally invasive and promising way of stopping lung cancer in its tracks.

"This technology significantly advances our ability to provide earlier intervention of small lung cancer nodules that we would have previously just observed," says Federico Steiner, M.D., chief of thoracic surgery at Overlook, who has studied and treated cancers of the chest for more than 17 years. "Adopting this new technology will make a huge difference in overall survival."

## Mako™ — A "Hip" Approach to Joint Replacement

The Mako robotic arm enables orthopedic surgeons to create a virtual 3-D model of the patient's knee or hip joint as well as a presurgical plan that details the technique for bone preparation and customized implant positioning. During surgery, the Mako technology and robotic arm help the surgeon clearly identify and replace diseased areas of bone with an artificial prosthesis, while preserving surrounding healthy tissue. The surgeon-controlled robotic arm enables knee and hip replacements to be executed with a greater degree of accuracy.

"The beauty of it is, I can do the whole surgery before I even enter the operating room, using the planning software based on the patient's pre-operative CT scan," remarks Jared Preston, M.D., an orthopedic surgeon with Atlantic Medical Group, who specializes in total or partial knee replacement. "We aim for perfection, and we achieve accuracy that is within a millimeter. This significantly reduces post-operative complications and the need for revisions."



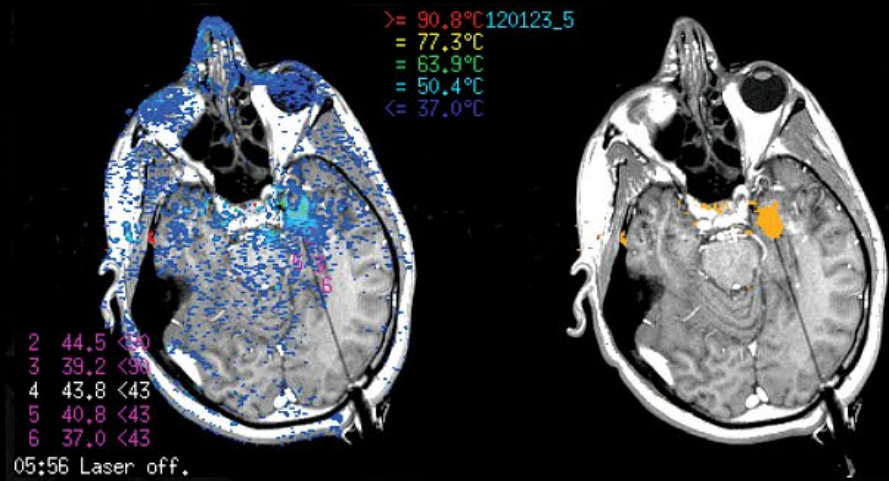
Federico Steiner, M.D.



# NEUROSURGERY GETS

## LITT

Neurosurgeons at Overlook are now utilizing a minimally invasive technique, combining lasers with heat, to destroy unhealthy brain tissue in patients with brain tumors, radiation necrosis (cell damage), and certain types of epilepsy.



Laser interstitial thermal therapy (LITT) provides the benefits of traditional brain surgery with less risk and little to no recovery time for certain patients.

“LITT works phenomenally in controlling seizures for some epilepsy patients and helps relieve symptoms following surgery, radiation, and chemotherapy for some brain tumor patients,” observes Ronald Benitez, M.D., medical director of endovascular neurosurgery at Atlantic Health System and director of both the Brain Aneurysm Center and Surgical Epilepsy Program at Atlantic Brain and Spine.

While the patient is asleep under anesthesia, the neurosurgeon creates a 3.2 mm hole in the skull. Using MRI and robotic guidance, the

surgeon navigates a thin fiberoptic probe toward the problem area of the brain. Once the fiberoptic wire is in place, a laser beam is directed through the probe to heat and destroy cancer cells, areas of dead tissue (necrosis), or a brain lesion where epileptic seizures begin.

Throughout the procedure, real-time intraoperative MRI sequencing visualizes thermal damage to abnormal cells and measures the temperature of the surrounding brain, helping to ensure that there is no damage to nearby healthy tissue. The surgeon then removes the probe and closes the tiny incision. Most patients go home the following day and require little to no recovery time. Because the incision is so small, there is less scarring and minimal to no hair removal.

One of a select few neurosurgeons who specializes in both the surgical and endovascular management of cerebrovascular disease, Dr. Benitez points out that LITT complements Overlook’s best-in-class imaging and navigational capabilities. “It has become a critical tool for epilepsy surgery and an accepted adjuvant palliative therapy for brain tumor patients.”

# In Praise of PALLIATIVE CARE and HEALTHCARE ETHICS

“In the end, it’s not the years in your life that count. It’s the life in your years,”

Abraham Lincoln once said. Today, those words ring true for many patients and families coping with the physical, psychological, social, and spiritual issues surrounding a life-limiting illness. And that’s when palliative care and healthcare ethics can provide much-needed support.

“We have a holistic transdisciplinary approach to helping patients and their loved ones make informed decisions about their healthcare, quality of life, and end of life,” says Abdul Mondul, M.D., medical director of the Palliative Care Program at Overlook, which recently received advanced certification by the Joint Commission. Team members, who include Dr. Mondul, a chaplain, social worker, and nurse practitioners, are certified in palliative care and collaborate on all aspects of the patient’s care – from admission through discharge to follow-up and bereavement support.

Since its establishment in 1999, Overlook’s Palliative Care Program has grown from providing 60 inpatient consults annually to more than 1,400 in 2024. “This year, that number is expected to reach 1,800 as demand increases,” says Yvette Vieira, senior manager, Palliative Care and Healthcare Ethics for Atlantic Health System. The consultations – which primarily occur in inpatient oncology, intensive care, neuroscience and cardiology

units, as well as the Emergency Department – are unique to each patient and family and respect their moral values, spiritual beliefs, and cultural practices.

“By the time these patients are in the hospital, their disease is fairly advanced,” observes Yvette. “They’re scared, nervous, and overwhelmed. Our team members meet with patients and their families an average of four times before discharge. They make sure the patient is equipped to make decisions about their health that reflect their values and wishes. That is exceptional relationship building!”

Virtual outpatient visits have helped maintain relationships with palliative care patients and families who live in rural areas or have difficulty traveling to Overlook. “I would never have imagined the strong bonds I’ve created through telehealth,” says Dr. Mondul, citing there are approximately 700 outpatient encounters each year throughout numerous New Jersey counties.

“We collaborate with many oncology practices who understand the benefit of referring patients to palliative care early in the course of their illness.”

Patients and families struggling to make critical healthcare decisions at Overlook can also benefit from complimentary consultations with a healthcare ethicist. “Healthcare ethics touches every stage of life, but I frequently collaborate with the Palliative Care Team to help families make informed decisions and formulate an aligned approach to their loved one’s care,” remarks Lisa Goldman, a healthcare ethicist with a background in health and pharmaceutical law.

Support from Overlook Foundation has enabled both the Healthcare Ethics and Palliative Care Programs to thrive by funding crucial staffing needs and innovative educational and community outreach. “These programs are an integral part of our healing culture and are only possible through philanthropy,” comments Dr. Mondul.



Yvette Vieira, Abdul Mondul, M.D., Lisa Goldman



# THE FUTURE of Emergency Psychiatric Care

Chest pain, shortness of breath, severe injuries, and excessive bleeding are all common reasons to visit an emergency department (ED). But increasingly, there are patients in the ED experiencing a much different type of emergency — a mental health crisis.

With the recent opening of its innovative EmPATH unit, Overlook Medical Center has taken one small step toward early intervention and treatment for this special group of patients and one giant leap for the future of emergency psychiatric care.

“The experience of a psychiatric patient in a traditional emergency department, which was developed for acute medical issues rather than behavioral health issues, has been very problematic through the years,” comments psychiatrist Peter Bolo, M.D., chair, Department of Psychiatry and Behavioral Health at Overlook. “At hospitals throughout the state, patients with emergency behavioral health needs are faced with prolonged waits in emergency departments for care and bed availability.”

Peter Bolo, M.D., John Sobotka, M.D.

Since the opening of Overlook’s EmPATH unit last March – the first of its kind in New Jersey – patients identified as having an acute mental health crisis or psychiatric complaint are moved from the ED to a therapeutic environment designed to meet their individual needs. EmPATH (Emergency Psychiatric Assessment, Treatment and Healing) seeks to put patients on a path to recovery expeditiously and in the appropriate setting, lessen volumes and wait times in the ED, and reduce the need for inpatient hospitalization.

The 1,800-square foot EmPATH unit, located adjacent to Overlook’s 24-bed inpatient behavioral health unit, is equipped to treat up to eight patients. Staffed by psychiatrists, psychiatric nurses, clinicians, and social workers, it features an open floor plan with recliners that convert to beds, a kitchenette, coffee maker and snacks, blankets, a bathroom and shower, and a common space for group therapy. “Our goal is to see patients within an hour of the decision to transition them from the ED,” says John Sobotka, M.D., who directs psychiatric emergency and observation services at Overlook. “They are given a full evaluation by a psychiatrist; medications, if necessary; and individual and/or group counseling with the goal of getting them on a trajectory for healing – whether that be a structured outpatient program, voluntary hospitalization, or involuntary hospitalization.”

In 2023, more than 2,500 people went to Overlook’s ED for a mental health emergency. Those numbers are expected to climb. “Anxiety, depression, and other behavioral health complaints have risen

steadily since the 2020 COVID pandemic,” points out Dr. Bolo. “There’s also much less stigma about seeking help for mental health issues in our culture, so that’s led to more people availing themselves of services, including emergency services.”

Since EmPATH’s opening, the length of stay in the ED among mental health patients has been cut in half, while the average

## EmPATH Emergency Psychiatric Assessment Treatment and HEALING

time spent in the EmPATH unit itself has decreased from 30-40 hours to 24 hours. “Importantly,” observes Dr. Sobotka, “we’re not seeing a jump in readmissions within 30 days. That’s indicative of our effective outpatient plans, and that’s exactly what we want.”

A significant advantage of the EmPATH model is that time spent there in observation helps de-escalate crisis situations and the level of subsequent patient care required. Admissions to Overlook’s inpatient behavioral health unit

have reduced from 50 percent of patients coming to Overlook emergency services for psychiatric help to between 20 and 30 percent. There has also been a significant rise in the number of patients previously recommended for involuntary hospitalization agreeing to voluntary inpatient admission. Staff members, too, report high levels of fulfillment and members from other units are requesting shifts in the EmPATH unit.



Is Overlook on the forefront of a trend in psychiatric care? “Absolutely! We weren’t even open yet, when other hospitals were calling and asking about the program,” comments Dr. Sobotka. “We invited them to come and take a look, and since then, we’ve had several conversations with others looking to set up something similar. We’re happy to take up that banner and share it with others. We’ve seen the successes on this unit and believe this is a direction in which mental health should go.”





Mark Leekoff, M.D., Andrew Sylvester, M.D.

# Navigating a Full Life for MS Patients

Lindsay will never forget the date April 1, 2016. That was the day the 34-year-old special education teacher from Livingston woke up and couldn't feel her feet.

Within a week, she was immobile and numb from the waist down. Soon, thereafter, she was completely blind. "I was married with two young boys – ages three and five. I had a job I was passionate about, and I couldn't walk or see," remembers Lindsay. "Ironically, I had been having symptoms for a long time and my parents had taken me to doctors up and down the east coast. No one was able to put the pieces together." That is, until she met Manhattan-based neurologist Andrew Sylvester, M.D.



AHS Multiple Sclerosis Comprehensive Care Center team

Dr. Sylvester confirmed that Lindsay had multiple sclerosis (MS), an incurable autoimmune disease in which the body's immune system mistakenly attacks the protective covering of nerves – called myelin – in the brain and spinal cord. MS can cause a range of chronic or intermittent symptoms, including fatigue, muscle weakness, difficulty walking, vision problems, loss of balance and coordination, bladder dysfunction, and pain. Under Dr. Sylvester's care, Lindsay received medications, physical and cognitive therapy, and neuro-ophthalmic care that allowed her to regain her sight and her mobility within weeks. In the ensuing years, Dr. Sylvester and his colleague, neurologist Mark Leekoff, M.D., continued to successfully manage Lindsay's condition.

"Dr. Sylvester has taken me from the darkest times in my life to being normal," says Lindsay. "I live a very typical life. No one would ever know I had MS by looking at me."

Now, patients like Lindsay have access to the same expert compassionate care she receives from Drs. Sylvester and Leekoff at Atlantic Health System's new Multiple Sclerosis Comprehensive Care Center in Bridgewater. Dr. Leekoff, the center's site director, specializes in the diagnosis and treatment of MS, neuromyelitis optica spectrum disorder (NMOSD), myelin oligodendrocyte glycoprotein antibody-associated disease (MOGAD), and other neuroimmunological conditions.

"I wanted to establish a center that I would want for my own family," comments Dr. Leekoff, whose father's MS diagnosis prompted him to make

treating it his life's work. "We don't just treat the disease, we treat the patient and develop treatment plans that reflect the patient's goals, lifestyle, and concerns. All phone calls are returned the same day – even on weekends – and we pride ourselves with being on time with patient visits."

Dr. Sylvester, the system director for MS and NMOSD, has more than 25 years of experience in MS care and research. He specializes in the care and symptom management of patients with neuro-immunological diseases including MS, NMOSD, MOGAD, myasthenia gravis, neurosarcoidosis, Sjögren's syndrome, and other autoimmune central nervous system diseases.

"We provide thorough diagnostic evaluations and a wide array of services to manage both the disease itself and associated symptoms," explains Dr. Sylvester. "Our patients have access to the newest treatment options, latest clinical trials, rehabilitation programs, and various subspecialists, all within our facility. Plus, we are the first center in New Jersey with a specialized program for NMOSD and MOGAD – two rare, severe, but treatable diseases that resemble MS."

Patients with neuroimmunological diseases, Dr. Sylvester points out, often need expensive equipment for mobility assistance. Support from the Overlook Foundation has allowed patients to get devices for their hands and legs that they would otherwise be unable to afford. In fact, Lindsay's 13-year-old son devoted his recent Bar Mitzvah project to raising funds for Foundation support of the MS Center.

Citing the fact that MS is a lifelong illness, requiring ongoing monitoring and modifications, Lindsay reflects on the relationship her family has developed with Drs. Sylvester and Leekoff. "Both gentlemen are incredible. They are beyond doctors. They are my close friends, and I am forever indebted to them."

"We have patients from throughout the U.S. and the world," observes Dr. Sylvester. "Some have been with me since 1999. We treat them like family members."



Lindsay and her family on Stratton Mountain

Lindsay, now 43 and living with her family in Vermont, continues to see Dr. Sylvester for periodic checkups in Bridgewater. And during the winter months, you can find her at Stratton Mountain, enjoying her newfound passion – skiing!





## Making Wishes Come True

For more than a century, the Overlook Auxiliary has worked tirelessly to provide the hospital's patients, visitors, and staff with those "extras" that enhance the Overlook experience.

In 2024, proceeds from the organization's annual luncheon yielded a \$25,000 donation to the Stacy Goldstein Breast Center, while its third annual Art for Overlook event supported a \$24,000 donation to pediatric mental health initiatives. And a single \$10,000 gift helped launch a bilingual breastfeeding program for HealthStart families.

The Auxiliary's longest-running fundraiser, The Gift Shop & Bloom, together with Twig initiatives and donor contributions, allowed the group to fulfill a number of departmental "wishes" that included:

- Operating room speakers
- MP3 players and headphones for the post-anesthesia care unit
- 400 "Code Lavender" comfort bags for nurses (assembled by Junior Twigs)

- Warming oven for radiation oncology
- Magazine subscriptions for waiting rooms
- SoundEar and Echo Dot speakers for quiet hours in inpatient oncology
- Ice machine for the infusion center
- 100 "Sound Amplifier" kits for elder care
- \$4,000 in nursing scholarships (Short Hills Twig 27 vendor sales)
- 251 baby hats, 636 reusable shopping bags, and 80 fidget aprons (Summit Twig 25)

Launched in 2018, the Auxiliary's Junior Twig program nearly doubled its membership to 200 this year, engaging in a variety of activities:

- Beaded keychains for nurses (Chatham)
- \$1,200 in gift cards and toys for HealthStart (Kent Place "Hugs from Home" fundraiser)
- \$1,000 for the Stacy Goldstein Breast Center (Oak Knoll T-shirt fundraiser)

(above) Sorting day for family and friends of New Providence Twig 10, whose members raised over \$13,000 through a Thanksgiving fundraiser and food drives which fed 500 families.

Bed rest is a necessary part of any hospital stay; but it also has some downsides. Patients in medical, surgical, psychiatric, and critical care units spend 88 to 100 percent of their time in bed. Prolonged immobility can negatively impact a patient's physical, psychological, cognitive, and social functioning. It increases the risk of thromboembolic disease (formation of blood clots that can block blood vessels), pneumonia, pressure injuries, and contractures (permanent tightening of muscles that impede flexibility and movement). During bedrest, muscle mass can decrease by as much as 1.5-2 percent per day. That's why Overlook's patient care teams have mobilized around a hospital-wide campaign to increase inpatient mobilization called EveryBODYmoves @ OMC.

"Although our team members in every adult inpatient medical unit mobilize their patients and understand the importance of doing so, we wanted to proactively create a program that would provide them with additional information and resources to create a more streamlined, routine standard of care across all inpatient units with the same goals and expectations," comments Ashley McKnight, nurse manager in the Nursing Education Department.

Adapted from an evidence-based program developed by Johns Hopkins Medicine, EveryBODYmoves @ OMC aims to reduce length of stay, discharge patients to their homes versus a subacute rehabilitation center, prevent falls, and improve the overall patient experience. It begins with a baseline evaluation of a patient's mobility and their ability to perform activities of daily living. Individual mobility goals are then established and evaluated throughout their stay.

## EveryBODYmoves



Christina McKenzie, Barbara Steingas, Ashley McKnight, R.N.

## Mobilizes Inpatients

"On every shift, we evaluate their mobility status utilizing an evidence-based mobility tool," explains Ashley. "Did they require an assistive device, such as a walker? Are they nearing their baseline? How far do they walk or need to walk before they can be safely discharged?" These activities are noted in their chart

as well as on the new mobility whiteboards that have been added to all patient rooms, allowing the nursing team, physical therapists, and physicians to easily track and communicate progress toward reaching the patient's mobility goals.

Thanks to Foundation support, eight of Overlook's adult medical inpatient units are now equipped with Sara Steady mobility devices, which aid in the promotion of early mobilization. Now, patients requiring minimum to moderate assistance can be more safely and easily mobilized throughout their room.

The nursing team sees these new devices are a gamechanger for increasing patient mobility.

Is EveryBODYmoves @ OMC here to stay? Thought leaders at Overlook think so. "Under the direction of Chief Nursing Officer Heather Veltre and the rest of our working group, we feel that we've put together a very solid program," says Ashley. "Our goal is to operationalize it here, track the outcomes, and then share this program with the other Atlantic Health hospitals to make it a systemwide program. We're very optimistic!"





Ed and Sue Goldstein



Ashley McEnroe, Bob McCracken, Carol Vargas, Kevin Lenahan, Nikki Sumpter, Dr. Brian Radbill, Stephanie Schwartz, Chris Herzog, Heather Veltre, Stella Visaggio, Lauren Yedvab, and Colleen McManus



Nancy and Neil Weidner

Broadway stars headline  
an evening full of inspiration,  
generosity, and fun

# ALL THAT GLITTERS Gala Dazzles



Ruth and Mike Lipper with Dr. Bonni Guerin

Guests dressed in their best glad rags and headed to our 1920s supper club for cocktails, dinner . . . glitz, glamor, and all that jazz . . . for the Overlook Foundation **All That Glitters** gala at the Mansion at Natirar.

Benefiting the Stacy Goldstein Breast Center at Overlook, the November 15th event honored **Michael and Ruth Lipper**, avid supporters of the arts, education, and innovation, and the foundation's 2024 Medical Marvel – **Dr. Bonni Guerin**, director of breast services at Overlook.

Event chairs **Neil and Nancy Weidner** were joined by honorary chair **Mandy Gonzalez**, star of such Broadway megahits as *Hamilton*, *Wicked*, and *In the Heights*. Currently appearing in the lead role of *Sunset Blvd.*, Mandy performed alongside fellow theatrical talents Rob Evan (*Jekyll & Hyde*, *Les Miserables*, *Tarzan*) and Shereen Pimentel (*West Side Story*, *Evita*, *The Lion King*), with backup from the Gill St. Bernard's School Honors Choir.



Tom and Dr. Suneeta Varkey with Christina and Dean Serratelli



Shereen Pimentel



Rob Evan

Mandy Gonzalez



# OVERLOOK FOUNDATION

## Giving at a Glance

Restricted Gifts  
for Capital and Program  
\$8,747,833

Unrestricted  
Annual Support  
\$1,575,815

Total  
\$10,323,648



The foundation team: (rear) Camille DeTosta, Sue Coven, Kelly Lallis, Eileen Weiss, Marie Roberti, Amanda Zampino, Kerry Mowry, Aimee Artzer, (front) Kim Myler, Jillian Parks, Clelia Biamonti, Marianne Devlin, and Dina Rieman.

# THE HONOR ROLL OF DONORS

**The Future Is Now** is a tribute to the philanthropy of individuals and organizations who contributed \$1,000 or more to the Overlook Foundation during calendar year 2024. Your investment in Overlook today promises the best of healthcare for our children tomorrow and for years to come.

## DIAMOND SOCIETY

Gifts of \$1 million or more  
Hugh D'Andrade

## LEADERSHIP CIRCLE

Gifts of \$250,00 – \$999,999

Jessalyn Chang  
Elizabeth Compton and Eric Grubman  
Dianne and George Fotiades  
Sue and Ed Goldstein  
Kitty and Dave Hartman  
Mr. John Edwin Reeves Jr.  
Mike and Jill Tanenbaum  
Jean Marie and Christopher Volpe

## CHAIRMAN'S CIRCLE

Gifts of \$100,000 – \$249,999

Anonymous (1)  
Mrs. Gerald J. Glasser  
Cassandra Hardman and Bill Baker  
Lee and Murray Kushner  
Ruth C. and A. Michael Lipper  
Frank and Maura Perier Jr.  
Roberta Guarino and Lawrence Rafsky  
Neil and Nancy Weidner  
David and Emily Wexler

## TITANIUM LEVEL

Gifts of \$25,000 – \$99,999

Anonymous (3)  
Meri and Sol Barer  
Ms. Suzanne B. Engel  
Linda and Robert Flanagan  
Michael and Joan Gambro  
Dr. and Mrs. Albert J. Gosen  
Dr. and Mrs. Robert Hariri  
Mrs. Bev J. Luehs  
Mr. and Mrs. Martin J. Minnicino  
Mr. and Mrs. Nikhil Minocha  
Eileen Paragano  
Dr. and Mrs. Jeffrey S. Peris  
James F. Redfern and  
Marygrace Redfern  
Mr. and Mrs. Thomas W. Rooke  
Chuck and Jennifer Salzman  
Richard and Madeline Salzman  
Dean and Christina Serratelli  
Mr. and Mrs. Howard Shallcross  
Douglas and Tracey Sieg  
Kathy Z. Tatlow  
Mr. Thomas Varkey and  
Dr. Sunetta Chacko Varkey  
Frank and Mimi Walsh  
Pat and Carol Welsh  
Dr. Jessie Swain Wilt and  
Mr. William Wilt

## PLATINUM LEVEL

Gifts of \$15,000 – \$24,999

Anonymous (1)  
A. Jude Avelino  
Clelia Biamonti and Adam Psichos  
James N. Gardner, M.D.  
Dr. and Mrs. J. Scott Gillin  
Mr. and Mrs. Lori Dahl and  
Benjamin Goldin  
Mr. and Mrs. Matt Kaplan  
Dr. Rasha Batarseh and  
Dr. Ashish A. Khot  
Mr. and Mrs. Albert L. Lord III  
Dr. Sharon E. Selinger and  
Dr. Dennis A. Lowenthal  
Richard and Kayla Pechter  
Marilyn Pfaltz  
Mr. and Mrs. Daniel Schorr  
Eric and Therese Shick  
Dr. and Mrs. Howard Szikman  
Mr. and Mrs. D. M. Turko  
Dr. John and Joanne Vigorita  
Sandra and Art Williams

The Overlook Foundation raises funds that are used to purchase state-of-the-art equipment and fund special programs to help Overlook Medical Center remain in the forefront of medical care.

If you would like to become a member of the "Overlook Medical Center Family" by supporting the Foundation, you may

- Become a "Distinguished Friend of Overlook Medical Center" with an annual gift of \$2,500 or more;
- Designate your gift for a restricted or specific project or allow the Foundation's board of trustees to determine the most needed application of your donation;
- Make a Gift of Gratitude in honor of a caregiver;
- Memorialize or commemorate an individual, family, or group by donating;
- Make a planned or deferred gift to maximize tax advantages and/or protect current or future income, thereby becoming a member of our Heritage Society.

All Overlook Foundation gifts are tax deductible and remain at Overlook.

For more information about how you can help further Overlook's mission to provide exemplary health care services to its communities, please contact: Overlook Foundation, 46 Beauvoir Avenue, Summit, NJ 07901, 908-522-2840, [www.overlookfoundation.org](http://www.overlookfoundation.org)



Association for Healthcare Philanthropy members represent more than 2,200 healthcare facilities around the world. Organizations receiving the high performer seal have reported net fundraising revenue in the top 25% of participating hospitals.



The highest rating awarded by Charity Navigator, the nation's largest and most-utilized evaluator of charities, four stars recognizes an organization's strong financial health and commitment to accountability and transparency.



## HONOR ROLL OF DONORS

### GOLD LEVEL

Gifts of \$5,000 – \$14,999

Anonymous (8)  
 William and Darlene Aimetti  
 Mrs. Barbara Z. Alleyne  
 Alan and Beverly Anderson  
 Jac and Kay Andre  
 Dr. Sharen G. Anghel and  
 Mr. Tamir Anghel  
 Anne and Paul Babineau  
 Barbara and Rich Bagger  
 Dr. Maithili V. Rao and  
 Mr. Kishore Ballal  
 Dr. Ronald P. Benitez  
 Mr. and Mrs. Joseph Berkery  
 Luke M. Beshar  
 Denis Bovin  
 Terry Bovin  
 The Honorable and  
 Mrs. Jon M. Bramnick  
 Mr. and Ms. Roger L. Burgdorf  
 Mr. and Mrs. Alan Campbell  
 Mr. and Mrs. Joseph Chiarello  
 Mr. and Mrs. Stephen Chiarello  
 Mr. and Mrs. William S. Crane  
 Mr. and Mrs. Gerald C. Crotty  
 Ronan and Lisa Curran  
 Mr. and Mrs. Ian Davies  
 Mr. and Mrs. Donald F. DeMuth  
 Ms. Claire E. Toth and  
 Mr. David G. Dietze  
 Alice S. Dillon  
 Chris and Lisa Donoghue  
 Mr. and Mrs. James A. Engle  
 Dr. Elizabeth and Mr. Kevin Fagan  
 Dr. and Mrs. Muhammad S. Feteiha  
 Robin and Louis Friedman  
 Dr. and Mrs. Sidney Glasofer  
 Matt and Liz Goldberg  
 Mr. and Mrs. Brian Gagnolati  
 Dr. and Mrs. Walter L. Goff  
 Mrs. Karen Grouss in Memory  
 of Mr. Michael Grouss  
 Dr. Bonni L. Guerin  
 Mr. and Mrs. Herbert Heflich  
 Mr. and Mrs. Howard Kaminsky  
 Mr. and Mrs. Akshay Kapoor  
 Ms. Kathryn Kimber  
 Andrew and Elizabeth Kriegman  
 Mr. and Mrs. Thomas P. Kurlak  
 James Loynd  
 Catherine and Jack Lyness

Dr. and Mrs. Subhash Makhija  
 Drs. Sarah and Marc Mandel  
 Mr. and Mrs. Jack S. Mann  
 Mr. and Mrs. Antonio Martinho  
 Lowell and Jennifer Millar  
 Leslie and Stuart Milsten  
 Mr. and Mrs. Edgar Mokuvos  
 Kim and Kevin Myler  
 Colin Neill  
 Jason and Julie Nortillo  
 Brett and Sherry O'Brien  
 Henrik and Donna Patel  
 Mrs. Judith M. Pearlman  
 Mr. and Mrs. David M. Peck Jr.  
 Dr. and Mrs. James Pierre-Louis  
 Dr. David Powell  
 Samantha B. Pozner, M.D. and  
 Andrew Hickman  
 Edward M. Rabin and  
 Ellen Rabin  
 Melissa and Peter Ramsey  
 Mr. and Mrs. R. T. Richardson  
 Dr. Alan Rigby and  
 Raneeta Sawhney-Rigby  
 Mr. and Mrs. Richard A. Rosen  
 Gita Rothschild-Berry  
 Mr. Edward W. Rowan Jr.  
 Sara-Ann and Robert Sanders  
 Mr. and Mrs. Brian J. Savage  
 Lewis Schragger and  
 Frances Marshall  
 Mr. and Mrs. Philip C. Scott  
 Mr. and Mrs. Michael Setola  
 Dr. Ashish A. Shah  
 Bart and Mary Sheehan  
 Dr. and Mrs. Robert Slama  
 Mr. and Mrs. Robert C. Stites  
 Dr. Joshua A. Strauss  
 Ms. Sharlene Asato and  
 Mr. Christopher Sullivan  
 Dr. Scott and Mrs. Sarah Sundick  
 Mrs. John C. Swett  
 Mrs. Ann Talcott  
 Vincent and Susan Ursino  
 Donna and Jack Walcott  
 Don and Michele Weeden  
 Dr. Michael L. Weinrauch  
 Mary Claire White  
 Lauren and Joshua Yedvab



### Elevating Women's Health and Wellness

The foundation's 4th Annual Sporting Clays Shoot, sponsored this year by the Chiarello Family, drew both novice and expert shooters to the spectacular Hudson Farm Club in Andover. Dozens of supporters enjoyed a crisp fall day on 4,000 acres of landscaped farmland in rural Sussex County to benefit the Stacy Goldstein Breast Center at Overlook Medical Center.

Speakers at the event awards dinner – held at the club's Crow's Nest pavilion – included Dr. Marc Mandel, Overlook's chief of general surgery, and Dr. Jim Gardner, of Summit Plastic Surgery. Prizes were awarded to the first-place squad, pictured (Joe Mignon, Ben Faden, Stephen Chiarello, and Joseph Chiarello); top-scoring individual, Joe Mignon; and leading conservationist, Hariett O'Connor.

### SILVER LEVEL

Gifts of \$2,500 – \$4,999

Anonymous (1)  
 Jean B. Ball  
 Dr. and Mrs. Jon A. Bartlett  
 Mr. and Mrs. John R. Berger  
 Theresa and Gerald Bernaz  
 Mrs. Ariadna Biete and  
 Mr. Victor Bultó  
 Drs. Erwin and Jeanine Bulan  
 Elise Butkiewicz, M.D. and  
 John Lorenzo  
 Virginia and Shawn Cepeda  
 James and Ellen Coyle  
 Nancy S. Desnoyers  
 Ms. Carolyn H. Dorfman and  
 Dr. Gregory S. Gallick  
 Mr. and Mrs. Thomas Dunn  
 Timothy and Jennifer Erday  
 Marc and Kristin Faecher  
 Claude E. Fusco Jr.  
 Mr. and Mrs. Daniel Gold

Carol Graham  
 Meyra J. Green  
 Mr. John E. Griffith  
 Lois and Dick Griggs  
 Mr. and Mrs. Cary R. Hardy  
 Meg and Tom Healey  
 Ms. Ellen V. Kelly  
 Sharon and Stephen Kepniss  
 Devon and Suzanne Klein  
 Mr. Kevin Kuo  
 Theresa and David Langer  
 Martin and Maxine Lawrence  
 Ms. Erica Lee  
 Mr. and Mrs. Kevin J. Lenahan  
 Norman and Kristina Luka  
 Elaine Mackin  
 Mr. and Mrs. John McCann  
 Mr. and Mrs. Edward B. McGeough  
 Mr. and Mrs. Frank J. McKenna Jr.  
 Mrs. Theodore R. Murnick

Michael and Jean O'Dowd  
 Mr. Christopher Paladino and  
 Ms. Erin Dolan  
 Carlene and John Pruitt  
 Sarah and Scott Roberts  
 Andrew and Kara Robinson  
 Elliot D. Rosenstein, M.D.  
 Dr. and Mrs. R. Gregory Sachs  
 Martin A. Schwarz, Ph.D. and  
 Patricia A. Connell, Esq.  
 Debbie and Fred Schwarzmann  
 Robert Spiegel  
 Dr. and Mrs. Lee F. Starker  
 Charlotte S. Stifel  
 Mr. and Mrs. Jeffrey S. Sullivan  
 MaryPat Sullivan  
 Andrew W. Tarulli, M.D.  
 Mr. and Mrs. Joseph Tato  
 Ms. Lisa O. Vaga  
 Marjorie and George Waltzinger

## Junior Board Helps Fund Breast Center Expansion

Student representatives from 18 area high schools recently concluded their tenure as Junior Board members of the Overlook Foundation, raising more than \$130,000 for the Stacy Goldstein Breast Center at Overlook Medical Center.



*Drs. Bonni Guerin and Faith Goldman (center) accept the 2023-24 grant check from Junior Board members: Gus Goyal, Delbarton; Victoria Stambaugh, Governor Livingston High School (HS); Connor O'Neill, Seton Hall Prep; Jin Zhang, Chatham HS; Kayla Kerr, Pingry; Vida Connolly, Oak Knoll; Chair Lindsey Midrano, Scotch Plains-Fanwood HS; Elliot Cha, Montclair Kimberley; Emily Qin, Newark Academy; Caroline Hand, Kent Place; Sydney Kim, UC-Allied Health Sciences; Bobby Bress, New Providence HS; Lilah Darcy, Summit HS; Jonah Ladetsky, Millburn HS; Emma Darrow, Westfield HS; Charlie Magistro, Oratory Prep; and Sydney Urbach, Morristown Beard. Missing: Courtney Anthony, Scotch Plains-Fanwood HS.*

Junior Board members serve a nine-month term and meet monthly to hear from foundation trustees, hospital personnel, and business professionals to gain an understanding of the role philanthropy plays in supporting a nonprofit hospital. This year's group toured the breast center, as well as the John E. Reeves Same Day Surgery Suite and Hersh Children's Center, and even tried their hand at simulated laparoscopic surgery under the direction of Dr. Muhammad Feteiha, chair of surgery at Overlook.

"Through this program, I was able to meet a wide array of individuals who impact Overlook's operations. From physicians and nurses to philanthropists . . . hearing their stories and understanding their love for their work was very inspiring," said student representative Jonah Ladetsky. "This experience allowed me to further my passion for medicine and give back to those in my community."

Each year, the Junior Board is tasked with designing a grant to be awarded to a specific department of its choosing. The 2023-24 group brought in more than \$30,000 through a variety of fundraisers including a color run, bake sales, tag days,

ShopRite bagging, and a cycle bar event, in addition to an online JustGiving campaign. And for the second consecutive year, a long-time foundation supporter and former trustee contributed another \$100,000 in acknowledgement of their efforts.

"Collaborating with other students dedicated to making a difference was so fulfilling," enthused student representative Caroline Hand. "I gained an appreciation for the business and philanthropic aspects of running a top-tier hospital. Knowing the impact our efforts will have on the Stacy Goldstein Breast Center and the women in our community is incredibly rewarding."

While one in eight women will develop breast cancer in their lifetime, 65% of cases are diagnosed at the localized stage, leading to a 5-year survival rate of 99%. Timely access to breast exams and intervention is critical to the ever-growing number of patients seeking screening and diagnostic procedures. To meet the rising demand, the center is installing new state-of-the-art mammography and ultrasound units, and hiring additional full-time technologists that will enable Overlook to offer nearly 9,000 more appointments annually.



## BRONZE LEVEL

Gifts of \$1,000 – \$2,499

Anonymous (6)  
Jonathan Abrams, M.D.  
Mr. and Mrs. George N. Allport  
Dr. and Mrs. Lloyd H. Alterman  
Dr. John R. and  
Mrs. Ellen T. Audett  
Mr. Pradipto Bagchi and  
Ms. Jaya Pal  
Mr. and Mrs. Tom Baio  
Mr. and Mrs. Doron Barness  
Khoren and Phyllis Basmadjian  
Ann and Ted Beason  
Mr. Joseph J. Bell, Esq.  
Mr. and Mrs. Kevin Bell  
Mrs. Janet B. Bent  
Ira and Joan Berkowitz  
Waseem A. Bhatti, M.D.  
Michael J. Blecker, M.D. and  
Nan M. Blecker  
Frank and Penny Bolden  
Stan and Ann Borowiec  
Carolyn and Adel Botros  
Mr. and Mrs. Nicholas Bradshaw  
Mr. and Mrs. Joseph L. Brescher Jr.  
Jim and Judy Brucia  
Nick and Kim Buccheri  
Dorothy and Tony Butler  
Dr. Sean K. Calhoun  
Karina Calzadilla Picicci and  
Arturo Picicci  
Dr. Gina Cambareri  
Dr. Aliza Alter and Dr. Eric Carniol  
Mary Lou Carter  
Mr. and Mrs. Robert E. Christiansen  
Christopher and Barbara Coates  
Mr. and Mrs. William A. Cohen  
Rosemarie Collingwood-Cole and  
Kenneth Cole  
Mr. Henry A. Collins  
Mr. and Mrs. Hong Ih Cong  
John P. Connor, M.D.  
Mr. and Mrs. John W. Cooper  
Mr. Jeffrey Craugh  
Chris and Tina Dadas  
Mary Damiano  
The Malasb  
Dr. and Mrs. Craig A. Dise  
Jacque and Chuck Dooley

Mrs. Joan B. Eilbott  
Ms. Amy Ennesser  
The Evans Family  
Mr. and Mrs. Joseph Fazio  
Mr. and Mrs. David J. Ferry  
Mitchell Feuer  
Mr. and Mrs. Terence M. Finan Jr.  
Dr. Robert D. Fishberg and  
Mrs. Gail Fishberg  
Mrs. William E. Ford  
Ingrid Franco, A.P.N.  
Dr. and Mrs. John Franzese  
Barry and Jane Freeman  
Mr. and Mrs. Anthony S. Giacona  
Dr. Faith R. Goldman and  
Dr. Noah Berkowitz  
Mr. and Mrs. Daniel J. Gregory  
Mr. and Mrs. Thomas F. Hagerstrom  
Ms. Amy Singer  
Judy and Brett Haire  
Ms. Ellen H. Hakes  
Ms. Delia Hamlet  
Ms. Susan B. Hammell  
Amy and Rick Hanley  
Mr. and Mrs. Brett Hardman  
Mr. Aaron Galileo and  
Mrs. Melissa Hartzell-Galileo  
Robert F. Heary, M.D.  
James Hefferan, M.D.  
James and Janet Hislop  
Dr. David and Yaffa Hoffman  
Nancy W. and Lee M. Horner  
Roger Hughes  
John and Ruth Huneke  
Ingrid Johnson  
Mrs. Carol G. Kanner  
Linda and Jay Kaplan  
Susan T. Kaye, M.D.  
Henry and Jane Kelly  
Sharon Kelly  
Neil Kramer, M.D.  
Mr. and Mrs. Carl J. Kreidler Jr.  
Mr. and Mrs. Russell Kurlak  
Rita Lanaras  
Mark Leekoff, M.D.  
Ms. Jennifer Levanchy  
Miles and Valerie Levin  
Jeff Levine and Deborah Lyons

Michele Logan  
Frank and Helen Macioce  
Mr. Paul Magistro  
Ms. Gaye McLaughlin  
Sandra and James McTernan  
Ms. Tracy Midrano  
The Morabito Family  
Christy and Neil Morganstein, M.D.  
Harold and Donna Morrison  
Kerry and Chris Mowry  
Mr. and Mrs. James A. Mozer  
Mr. and Mrs. Owen Murray  
Rita and Arjun Murti  
Lydia Nadeau  
Mr. Robert Napolitano  
Mr. and Mrs. Nhat Nguyen  
Mrs. Diane J. Noelke  
Dr. and Mrs. William H. O'Brien  
Mrs. Patricia O'Connor  
Kenneth P. Oliva  
Mr. Matthew and  
Mrs. Mary Beth O'Neill  
Janet and Russell Onishi  
Mrs. Karolina Pajdak  
Dr. Nicole Panza  
Dr. Robert A. Panza  
Dr. Amish Patel and  
Dr. Anar Shah  
Marion E. Paul  
Mr. and Mrs. Anthony and  
Stephanie Perrone  
Lynn S. Petrino  
Carol and Tom Phelan  
Betsy and Charles Phillips  
Mr. and Mrs. David Pisani  
Dr. David and Marilyn Plotkin  
Ms. Doriann Prasek  
Mrs. Patricia A. Proctor  
Mr. and Mrs. Richard Pzena  
Mr. and Mrs. Vincent A. Ranelli  
Mr. Leo Reilly  
Dr. Mitchell and Patricia Reiter  
Mr. and Mrs. Glenn Renzulli  
Mr. Ron Romano  
Ms. Annette Romas  
Kassandra L. Romas  
Linda and David Roscoe  
Dr. Megan and Mr. Peter Rosenstein

Lloyd and Sally Rosevear  
Drs. Robert and Joan Rothberg  
Mr. Prasad Saggurti  
Gwyneth and Rich Sample  
Mr. Sean Sanders  
Mr. Austin B. Sayre  
Ava and Steven Schlesinger  
Stephanie and Robert Schwartz  
Mr. John Serruto  
Talaxi and Mitha Shah  
Mrs. Donald P. Sharkey  
Mrs. Nancy B. Shepard  
Dr. Sarah Shihadeh  
Dr. Shruti Shukla and  
Mr. Sanjay Shukla  
Ms. Debra Dennis and  
Mr. Rob Singer  
Mr. and Mrs. Erik P. Sletteland  
Gloria and Brad Smith  
Mr. and Mrs. Robert Socha  
Dr. Sushmita Srivastav and  
Mr. Amit Srivastav  
Dr. and Mrs. Seth Stoller  
Mr. and Mrs. Andreas Stueremann  
Nikki Sumpter  
Mr. Howard Gralla and  
Ms. Joni Sweetwood  
Andrew Sylvester, M.D.  
Dr. John F. Tabachnick and  
Ms. Sharon M. Joyce  
Dr. Nana E. Tchabo  
Germaine and Richard Trabert  
Mr. and Mrs. Joseph J. Triarsi  
Linda and Joseph Tribuna, M.D.  
Mr. Steven Urbach  
Mr. Arthur T. Vanderbilt II  
Ms. Carol Vargas  
Ms. Linda Walker and  
Mr. Timothy Mulder  
Dr. Judy Washington  
Mr. and Mrs. Joshua A. Weinreich  
Mr. and Mrs. James O. Welch Jr.  
Ms. Joanna Wright  
Cecilia Zhang and Derek Lim  
Dr. Carol Zimmermann and  
Mr. John E. Joyce  
Sue and Burt Zwick

## Organizations

### DIAMOND SOCIETY

Gifts of \$1 million or more

D'Andrade Family Fund of CFNJ  
The Healthcare Foundation of New Jersey

### LEADERSHIP CIRCLE

Gifts of \$250,000 – \$999,999

Anonymous (1)  
The Nicholas J. and Anna K. Bouras  
Foundation, Inc.  
The Reeves Foundation

### CHAIRMAN'S CIRCLE

Gifts of \$100,000 – \$249,999

AHS ACO LLC  
The Connell Company  
Connie Dwyer Breast Cancer Foundation  
The Glasser Foundation  
The Dorothy B. Hersh Foundation  
Kronthal Family Foundation, Inc.  
Optimus Healthcare Partners LLC  
Regeneron  
The Valerie Fund

### TITANIUM LEVEL

Gifts of \$25,000 – \$99,999

Anonymous (1)  
Advanced Care Oncology and  
Hematology Associates  
Atlantic Health System  
Atlantic Realty Development Corporation  
BD  
Charles Foundation, Inc.  
Delta Dental of New Jersey Foundation  
Mitzi & Warren Eisenberg Family  
Foundation  
Elias Sayour Foundation, Inc.  
Emerson  
The George Washington University  
Goldman Sachs & Company  
Hartman Family Fund of CFNJ  
Head Family Charitable Foundation

## Introducing Circle 1906

The Overlook Foundation has proudly launched Circle 1906, a dynamic group of emerging philanthropists dedicated to supporting Overlook Medical Center. Named in honor of the year the hospital was founded, Circle 1906 brings together individuals ages 30 to 45 who are committed to investing in the future of healthcare excellence and community well-being.

With annual contributions of \$1,000 or more, Circle 1906 members play a crucial role in sustaining and advancing Overlook's mission. More than just a philanthropic group, it represents the future of the Foundation's supporters as members become an integral part of the Overlook Family, demonstrating their belief and trust in Overlook as the premier healthcare provider in our community.

Championed by Summit residents Maggie Chiarello and Ariele Sullivan, Circle 1906 aims to not only strengthen the Foundation's financial base, but also foster a sense of community and shared purpose among its members. The commitment of Circle 1906 members underscores the importance of investing in healthcare infrastructure and innovation. Their support is vital in maintaining the high standards of care that Overlook is known for and preparing for future healthcare challenges.

We celebrate the inception of Circle 1906 and look forward to its continued growth. Together, we are building a healthier future for all.



Ariele Sullivan and Maggie Chiarello

### PLATINUM LEVEL

Gifts of \$15,000 – \$24,999

The Heller Foundation  
Joy Street Foundation  
Kosloski Family Foundation  
The Blanche and Irving Laurie Foundation  
Leo Foundation, Inc.  
National Financial Services LLC  
Overlook Auxiliary  
Paragano Family Foundation  
Sandy Hill Foundation  
R. Seelaus & Co., Inc.  
St. George's University  
The Summit Foundation  
Team Health, Inc.  
Torcon, Inc.  
The Westfield Foundation

ACPE: The Standard for Spiritual Care and Education  
Armistead Mechanical, Inc.  
Banfield Family Foundation  
Charles Schwab & Co Inc  
E. J. Grassmann Trust  
The Hyde and Watson Foundation  
Investors Foundation  
Jewish Community Foundation  
Joseph Chiarello & Co., Inc.  
Morristown Pathology Associates  
Peerless Beverage Company  
The Torcivia Family Foundation, Inc.  
Union Foundation  
Zakaria Family Foundation



## GOLD LEVEL

Gifts of \$5,000 – \$14,999

Anonymous (3)  
 AEA Investors  
 Allan Briteway Electrical Utility Contractors, Inc.  
 BAMCO, Inc.  
 Bank of America  
 Bassett Associates  
 Bristol-Myers Squibb Foundation, Inc.  
 Brucker Family Fund of CFNJ  
 Burling Charitable Fund  
 Century Group  
 CFS Group  
 Margaret and Peter Chang Foundation  
 Charities Aid Foundation of America  
 Clara Jeffery Charitable Trust  
 Cogen Power Technologies  
 The Fred Fatzler Foundation  
 GEP  
 Greifeld Family Foundation  
 HDR Inc.  
 Holt Construction  
 Hudson Farm Foundation Inc.  
 ID Care  
 Johnson & Johnson  
 L.A.W. Foundation Inc.  
 The Leviton Foundation, Inc.  
 The Lipper Family Charitable Foundation  
 Lumina Foundation  
 The Jack & Meryl Mann Charitable Fund of CFNJ  
 New York Jets  
 NK Architects  
 Linda Sue Pfarrer Nortillo Charitable Foundation  
 Novartis Pharmaceuticals Corporation  
 Nurses Day  
 Percario Family Charitable Gift Fund  
 Douglas and Susan Present Family Foundation

PWI Engineering  
 Reiser Family Foundation  
 Rothschild Family Fund of CFNJ  
 Sage Residential Management LLC  
 Starfish Fund  
 Star-Lo Communications  
 Structure Tone  
 The Walter and Louise Sutcliffe Foundation  
 Ann E. Talcott Fund  
 Tanenbaum Keale LLP  
 Tore Electric  
 Wawa Foundation

## SILVER LEVEL

Gifts of \$2,500 – \$4,999

AB Facility Services LLC  
 Benevity Community Impact Fund  
 Bright Building Solutions  
 Clark Printing Inc.  
 County of Union, New Jersey  
 Eckroth Planning Group, Inc.  
 Gil-Bar Solutions  
 Healey Family Foundation  
 Leslie Digital Imaging LLC  
 Mid-Atlantic Surgical Associates  
 Newton Medical Center Foundation Inc.  
 Plainfield Foundation  
 Premier Energy Group, LLC  
 Standish Foundation  
 Summit Anesthesia Associates  
 The Walsh Company, LLC  
 White Deer Innovation LLC  
 The Ena Zucchi Charitable Trust

## BRONZE LEVEL

Gifts of \$1,000 – \$2,499

Anonymous (1)  
 Buckl Architects  
 Carmagnola & Ritardi, Attorneys at Law  
 Christ Church in Short Hills  
 Community Foundation of Greater Memphis  
 Concord Engineering Group, Inc.  
 Eagle One Roofing Contractors Inc  
 Envision Healthcare Corporation  
 Great Smiles General Dentistry  
 HB Engineers Inc.  
 The Hislop Family Foundation  
 HOK  
 Joanne D. Brown Foundation  
 Medicus Healthcare Solutions  
 MRB Foundation  
 Ocean Healthcare  
 Overlook Nursing Education Department  
 Partner Engineering and Science, Inc.  
 Peapack-Gladstone Bank  
 Pediatric Associates of Westfield, P.C.  
 Pejay Creations, Ltd.  
 Robert and Joan Rothberg Foundation Inc.  
 Smile Dental Boutique  
 Lizzie & Jonathan M. Tisch Fund at the  
 Jewish Communal Fund

## Bequests

Anonymous (1)  
 Estate of Helen A. Dowling  
 Estate of Jakob Marti  
 Estate of Frances K. Robinson  
 Estate of Marilyn Claire Shulman  
 Estate of Judith Wexler

## Donors to the Andy Bovin Memorial Fund

Gifts of \$1,000 or more

*When six-year-old Andy Bovin passed away in 1986 after a four-year battle with leukemia, his parents Terry and Denis created the Andy Bovin Memorial Fund. Today, gifts to this fund continue to support leading-edge leukemia research, as well as provide financial help to area families whose children are undergoing cancer treatment.*

Anonymous (2)  
 The Altman Kazickas Foundation  
 Angeles Wealth Management  
 Mr. and Mrs. James A. Champy  
 Mr. and Mrs. Terence N. Deeks  
 Mr. and Mrs. Harris Diamond  
 Mr. and Mrs. Robert Early  
 Linda and Robert Flanagan  
 Ms. Anna Gould  
 Mr. and Mrs. Sanford S. Grossman  
 Mr. and Mrs. Walter P. Havenstein Sr.  
 Head Family Charitable Foundation  
 Mr. and Mrs. Steven W. Katz  
 Mr. Daniel L. Keating  
 General and Mrs. Charles C. Krulak (USMC Ret.)  
 Ms. Gemma Leddy  
 Anne and Paul Marcus Family Foundation  
 Mr. and Mrs. William J. Michaelcheck  
 Dr. Gerald Rosenfeld and Ms. Judith Zarin  
 Mr. and Mrs. Louis Serio  
 Ambassador and Mrs. Clifford M. Sobel  
 Ms. Susan E. Stacey  
 Ms. Frances F. Townsend  
 Mr. Jonathan D. Weinbach  
 Ms. Susan Whitehead

## Physician Donors

Anonymous (6)  
 Jonathan Abrams, M.D.  
 Lloyd H. Alterman, M.D., FACP  
 Sharen G. Anghel, M.D.  
 Douglas S. Ashinsky, M.D.  
 Corina Atanase, D.M.D.  
 John Audett, M.D.  
 Janice E. Baker, M.D.  
 Jon A. Bartlett, D.D.S.  
 Rasha Batarseh, D.O.  
 Gary Belt, M.D.  
 Ronald P. Benitez, M.D.  
 Marc L. Benton, M.D.  
 Waseem A. Bhatti, M.D.  
 Michael J. Blecker, M.D.  
 Ian B. Brodrick, M.D.  
 Erwin J. Bulan, M.D.  
 Elise Butkiewicz, M.D.  
 Mark J. Calderon, M.D.  
 Sean K Calhoun, D.O.  
 Gina Cambareri, M.D.  
 Dean L. Carlson, M.D.  
 Eric Carniol, M.D.  
 John P. Connor, M.D.  
 Kenneth J. Davis, M.D.  
 Trevor G. DeSouza, M.D.  
 Craig A. Dise, M.D., Ph.D.  
 Rosina B. Dixon, M.D.  
 Charles E. Dooley Jr., M.D.  
 Elizabeth Fagan, M.D.  
 John P. Farry, M.D.  
 Muhammad S. Feteiha, M.D.  
 Robert D. Fishberg, M.D.  
 Suhey G. Franco Cadet, M.D.  
 John N. Franzese, M.D.  
 Barry C. Freeman, M.D.  
 Michael A. Fuhrman, M.D.  
 Robert A. Fuhrman, M.D.  
 Steven Furer, M.D.  
 Gregory S. Gallick, M.D.  
 James N. Gardner, M.D.  
 James Scott Gillin, M.D.  
 Sidney Glasofer, M.D.  
 Faith R. Goldman, M.D.  
 Albert J. Gosen, D.M.D.

Walter L. Groff, M.D.  
 Amy D. Gruber, M.D.  
 Bonni L. Guerin, M.D.  
 Frederick G. Haid, M.D.  
 Robert F. Heary, M.D.  
 James J Hefferan, M.D.  
 Zachary Kris Hernandez, D.O.  
 David H Hoffman, M.D.  
 Neil B. Horner, M.D.  
 Thomas V. Inglesby Sr., M.D.  
 Thomas E. Jackson, M.D.  
 Thomas Jauch, M.D.  
 Gary L. Kaye, M.D.  
 Susan T. Kaye, M.D.  
 Ashish A. Khot, M.D.  
 Devon A. Klein, M.D.  
 Thomas H. Kloos, M.D.  
 Neil Kramer, M.D.  
 Gina M. LaCapra, M.D.  
 Mark Leekoff, M.D.  
 Rachel Leibu, M.D.  
 Janet E. Leicht, D.P.M.  
 Kathleen H. Leistikow, M.D.  
 Dr. Megan Leitch, M.D.  
 James A. Levey, M.D.  
 Miles B. Levin, M.D.  
 David Levine, M.D.  
 Steven M. Levine, D.O.  
 Derek Lim, M.D.  
 Carolkay Lissenden, M.D.  
 Dennis A. Lowenthal, M.D.  
 Jennifer Lublin, M.D.  
 Norman L. Luka, M.D.  
 Marc Mandel, M.D.  
 Paul Markowski, M.D.  
 Neil L. Morganstein, M.D.  
 John J. Nevins, D.O.  
 Ari Nutovits, M.D.  
 Nicole Panza, M.D.  
 Robert A. Panza, M.D.  
 Amish Patel, M.D.  
 James Pierre-Louis, M.D.  
 David Plotkin, D.P.M., P.A.  
 David E. Powell, M.D.  
 Samantha Pozner, M.D.

Brian Radbill, M.D.  
 Maithili V. Rao, M.D.  
 Mitchell F. Reiter, M.D.  
 Andrew T. Robinson, M.D.  
 Robert Rosenbaum, M.D.  
 Elliot D. Rosenstein, M.D.  
 Megan A. Rosenstein, M.D.  
 Douglas M. Roth, D.O.  
 R. Gregory Sachs, M.D.  
 John S. Salaki, M.D.  
 Gabrielle Samuels, D.O.  
 Sharon Selinger, M.D.  
 Ashish A. Shah, D.O.  
 Talaxi D. Shah, M.D.  
 Sarah Shihadeh, M.D.  
 Robert D. Slama, M.D.  
 Jerome Spivack, M.D.  
 Lee F. Starker, M.D.  
 Elliott M. Stein, M.D.  
 Seth Stoller, M.D.  
 Joshua A. Strauss, M.D.  
 Scott Sundick, M.D.  
 Robert Sussman, M.D.  
 Phuong Sutherland, M.D.  
 Andrew Sylvester, M.D.  
 Howard Szikman, M.D.  
 John F. Tabachnick, M.D.  
 Andrew W. Tarulli, M.D.  
 Nana E. Tchabo, M.D.  
 Pauline A. Thomas, M.D.  
 Tiffany Toliver, M.D.  
 Joseph Tribuna, M.D.  
 John A. Tyrrell, D.O.  
 Melvin P. Vigman, M.D.  
 John F. Vigorita, M.D.  
 Claudia A. Wagner, M.D.  
 Judy Washington, M.D.  
 Andrew B. Weinberger, M.D.  
 Michael L. Weinrauch, M.D.  
 Laura V. Weisse, M.D.  
 Jessie S. Wilt, M.D.  
 Judith Zander, M.D.  
 Dr. Cecilia Zhang, D.O.  
 Carol E. Zimmermann, M.D.





### Golfers Support Breast Center Priorities

Proceeds from the foundation's 34th Annual Golf Tournament are helping to fund the expansion of one of the top programs in the state for breast cancer.

Additional technology and staffing are on tap for the Stacy Goldstein Breast Center at Overlook thanks, in part, to the golfers who hit the links last May at Canoe Brook Country Club. Foursomes on hand included Henrik Patel, Carlyle Newell, David Hannaford, and Tom Feitel (pictured).

Finishing at the top of the leader board on the North and South courses respectively were Ron Romano, Ray Romano, Jeff Craugh, and Kevin Levonaitis; and Joseph Chiarello, Stephen Chiarello, Kieran Moran, and Brian Keller. The Anthony F. Coppola, M.D. Memorial Award was presented to Chris Sylvia for the lowest individual gross score.

### Employee Support

- Anonymous (17)
- Joseph P. Aliseo
- Florise Altino-Pierre
- Rowan Bascombe
- Kathy Belfiore
- Patricia Bender
- Clelia Biamonti, Ph.D.
- Ruth E. Bogan
- Melissa Bonassisa
- Megan Brugna
- Taijon L. Butler
- Terry Carlin
- Jillian Carratala
- Nora Cary, R.N.
- Christine T. Casadonte
- Nancy Castellano
- Manuel Castillo
- Randi Cataquet, R.N.
- Althea Chin
- Stefanie Colton
- Lisa Conley
- Susan Coven
- Cindy M. Curley
- Mary Damiano
- Maria De Jesus, RN, CMSRN
- Maria DeLauro
- Michael DeBlock
- Camille DelTosta
- Marianne F. Devlin
- Rita A. Dyer
- Melissa M. Elam
- Mary Farrell
- Carlos A. Fernandes
- Ramon Flores, R.N.
- Salome Florida
- Suzette Francis
- Ingrid Franco, A.P.N.
- Marion Freeman-Hawkins
- Brian Gragnotati
- Jackie Grieco
- Suzanne Hamilton, R.N.
- Douglas Hayes
- Christopher A. Herzog
- Sorcha Hicks
- Nicole Hilborn
- Nicole Hooks
- Marsha Hoppe
- Nicole Hradil
- Wendy J. Irwin
- Maryanne Joachim, R.N.
- Ingrid Johnson
- Joane M. Jones
- Germaine Jordan, R.N.
- Kevin Joyce
- Barbara Jurkiewicz
- Sharon Kelly
- Kathleen Kilpatrick
- Mary Anne King
- Vicki Kostis
- Lauren Krause, R.N.
- Kelly Lallis
- Rita Lanaras
- Jude Lark, R.N.
- Michael Lattera
- Janet LeMonnier, LCSW
- Kevin J. Lenahan
- Jeff L. Levine, Ph.D.
- Diane L. Lindsey
- George Liothake
- Paul F. Marmora
- Karen Martinez
- Belinda A. Matos, R.N.
- Kristy Mayorga, R.N.
- Laura McDowell
- Frank J. McKenna Jr.
- Clorene McKenzie
- Carol McKissock
- Susan McNulty
- Jerome Medina
- Dorothy Mensah, R.N.
- Ewa Messano, RN, BSN, CCRN
- Amy Miano
- Karen A. Miceli
- Melanie Miller
- Jennifer Moran, R.N.
- Kerry Mowry
- Joan Murdoch
- Kim Myler
- Lydia Nadeau
- Tinowa Oreggio
- Jennifer Ortiz
- Nilda Ortiz
- Christian Pakosh
- Tammy T. Parker, RN, BSN
- Heather Patrikios
- Hui M. Peng
- Jamie Pereira, R.N.
- Isabel Pierre-Louis, R.N.
- Elizabeth Pittenger
- Mrs. Mary J. Pradilla
- Doriann Prasek
- Eileen M. Prendergast, R.N.
- Katherine Prentiss, R.N.
- Pat Regenber
- Cynthia Richards
- Dina M. Rieman
- Joseph Rimback, R.N.
- Paul Rodgers, A.P.N.
- Jennifer Scatcherd
- Stephanie Schwartz, FACHE
- Patricia Sohler, R.N.
- Teresa Soldiviero
- Maria Soubra
- John M. Stasil
- Christopher Stephan-Jones
- Maria Stratton
- MaryPat Sullivan
- Nikki Sumpter
- Mary Szymanski
- Marian Teehan
- Rosemary C. Tempesta
- Maurizio Tortora
- Carol Vargas
- Heather Veltre, D.N.P.
- Stella Visaggio
- Suzanne Vitiello
- Joanne Voorhees
- Daisy Ward
- Terrance P. Washburn
- Brian Wechsler
- Eileen S. Weiss
- Toia S. Whitaker, R.N.
- Bernadette Wilmore
- Danielle Wolf
- Joanna Wright
- Wendy Wright
- Lauren Yedvab
- Diane Zimmerman
- Deborah A. Zotte, R.N.

### The Overlook Heritage Society

Members of Overlook's Heritage Society came together for a springtime luncheon at Baltusrol Golf Club to connect and celebrate their shared commitment to Overlook Medical Center. The group was introduced to Dr. Brian Radbill, the hospital's new chief medical officer, whose vision and leadership are set to guide us into a new era of physician excellence. Members also received new Heritage Society pins to proudly display their dedication to Overlook.

In the fall, members were treated to an exclusive tour of Overlook's latest construction and renovation projects, including our all-new cardiology and neurology inpatient centers. Hosted by Clelia Biamonti, chief philanthropy officer, the tour offered an inside look at the cutting-edge facilities and innovations that will enhance patient care and outcomes for years to come.

The Heritage Society proudly recognizes its 132 visionary members who have generously invested in the future of healthcare excellence at Overlook. They have included us in their wills, designated gifts from their IRAs or retirement accounts, donated life insurance policies or interests in real estate, and/or created charitable trusts or annuities. Their forward-thinking contributions ensure that Overlook will continue to provide outstanding care for generations.

With heartfelt gratitude, we honor the memory of the four Heritage Society members we lost in 2024: Jean Hoffman, Edith Kreidler, Donna Walcott, and Lillie Zachary. Their gifts will benefit Overlook in those areas where the need is greatest.

To learn how a planned gift to benefit Overlook may be the best choice for you, please contact Aimee Artzer at the Foundation at 908-522-2181.



Jess Chang with Dave and Kitty Hartman

### 2024 Heritage Society Members

- Anonymous (1)
- Mrs. Robert Abelson
- Barbara Z. Alleyne
- Byron H. Arison
- Anne S. and Paul A. Babineau
- Phyllis and Khoren Basmadjian
- Mr. and Mrs. Amos T. Beason
- Janet B. Bent
- Mr. David Bialoglow
- Clelia Biamonti and Adam Psichos
- Mr. and Mrs. David C. Bushnell
- Diane J. Cesarz
- Ms. Jessalyn Chang
- Mrs. Judith A. Chicka
- Carol and Ed Cimilluca
- Kenneth D. Cole
- Millie and Jack Cooper
- Mr. David G. Dietze
- Mrs. Alice S. Dillon
- Christel A. Dynes
- Mr. George Eizenberg
- Mrs. Suzanne B. Engel
- Timothy and Jennifer Erday
- Mrs. Terrence M. Farley
- Mrs. William E. Ford
- Amanda and Steve Ford
- James N. Gardner, M.D.
- Sue and Ed Goldstein
- Mrs. Baxter W. Graham
- Mrs. Janet Axelrod Gray
- Ms. Meyra J. Green
- Dr. and Mrs. John J. Gregory Sr.
- Lois and Dick Griggs
- Nancy E. Gross
- Cassandra Hardman
- Mr. and Mrs. Cary R. Hardy
- Kitty and Dave Hartman
- Mr. and Mrs. James A. Hislop
- Mrs. Jean M. Hoffman
- Helen K. Hopkins
- Kay and Tom Inglesby
- Edith Kreidler
- Mr. and Mrs. Carl J. Kreidler Jr.
- Michael Kurak, Esq.
- Alan Lieber and Alice Heffner
- Mrs. Andrew M. Liptak
- Mr. and Mrs. Albert L. Lord III
- Mrs. Bev J. Luehs
- Norman and Kristina Luka
- Mrs. Shirley M. Lukawitz
- Mrs. Annette L. Mackie
- Mr. and Mrs. Michael Mastroianni
- Nick and Tracy McKee
- Mr. and Mrs. Gabriel L. Miller
- Ms. Paula M. Mooney
- Mrs. Ward H. Nessen
- Mrs. John Newbold III
- Mrs. Neil V. Norelli
- Helene Oppenheimer
- Ms. Nancy Ori
- Marlene Oslick
- Mrs. Audrey T. Parker
- Laura Parker
- Mr. and Mrs. Roger B. Parsons
- Dorothy Perko
- Mrs. Sandra Perrotta
- Anne F. Plaut
- Dr. Samantha Pozner
- Mrs. Camilla Kuhn Quinn
- Mrs. Christos Romas
- Dr. Sorosh F. Roshan
- Mr. and Mrs. Peter A. Santoriello
- Lisbeth Searing
- Dr. and Mrs. Talaxi D. Shah
- Mr. and Mrs. Bartholomew A. Sheehan Jr.
- Arline Siegel
- Linda D. Smith
- Mr. and Mrs. Michael J. Sniffen
- Barbara and Eugene Speni
- Mr. and Mrs. Robert C. Stites
- Stephen and Linda Stone
- Mrs. John C. Swett
- Melanie C. Sze
- Dr. Fatimah A. Tahil and Mr. John Reilly
- Mrs. Kathryn Z. Tatlow
- Renae Tesauro
- Ms. Susan M. Thomas
- Theresa Turko
- Vincent and Priscilla Ursino Sr.
- Mr. and Mrs. Peter J. Ventrella
- Donna and Jack Walcott
- David and Emily Wexler
- Richard and Elizabeth Wolffe
- Mrs. Lillie V. Zachary
- Dr. Carol Zimmermann



# OVERLOOK at a GLANCE

Overlook Medical Center – now in its second century of caring – brings academic-level healthcare services to a conveniently accessible suburban setting west of the Hudson River. Consistently earning accolades for clinical excellence and patient safety, it is home to some of the region’s most respected physicians, nurses, and technicians, who offer the most advanced technology, leading-edge treatment, and access to pioneering research and medical education in a healing culture that embraces patients and their families.

Our Summit, New Jersey campus is home to Atlantic Neuroscience Institute – the area’s leader in neurological care – which offers a broad range of state-of-the-art neurological, neurosurgical, and neurodiagnostic services. These include an Advanced Comprehensive Stroke Center (the first in the nation to use telestroke technology in ambulances), a Level IV Epilepsy Center, Atlantic Health Neuroscience Spine Center, and the Gerald J. Glasser Brain Tumor Center, where more brain tumor surgeries are performed than anywhere else in the state. Since 2019, Healthgrades® has recognized Overlook Medical Center among the top five percent of hospitals in the U.S. for excellence in the treatment of stroke, cranial neurosurgery and neurosciences more consecutive years than any other hospital in New Jersey or New York.

Our CyberKnife® program is the most experienced in the tri-state area at treating hard-to-reach tumors in the brain, prostate, pancreas, spine, lung, and liver. For our youngest patients and their families, the all-new Hersh Children’s Center is the region’s only combined pediatric emergency and inpatient facility. Beyond our Summit campus, Overlook’s network of caring includes multispecialty physician offices as well as primary care, urgent care, surgical, rehab, infusion, and imaging centers in Union, Clark, Bayonne, New Providence, Metuchen, and Bridgewater.

Overlook’s parent company – the not-for-profit Atlantic Health System (AHS) – serves more than half the state, including 14 counties and 7.5 million people. With more “#1 in NJ” state rankings than any other hospital system in the state, AHS offers more than 550 sites of care, including its eight hospitals, 27 urgent care centers, Atlantic Visiting Nurse, and Atlantic Health Virtual Visits. Facilitating the connection between these services on both land and air is the transportation fleet of Atlantic Mobile Health. AHS is powered by a workforce of 20,000 team members and 5,440 affiliated physicians, who are dedicated to building healthier communities in New Jersey, Pennsylvania, and the New York metropolitan area.



## Named a 2024 World’s Best Hospital

For the sixth consecutive year, Overlook Medical Center ranks among the world’s best hospitals, according to Newsweek. In addition, we were named one of America’s 50 Best Hospitals in 2024 by Healthgrades and recognized as a Best Regional Hospital in the NY Metro area by U.S. News & World Report for the 14th consecutive year.

The American Nurses Credentialing Center (ANCC) Magnet Recognition Program is the highest credential a health care organization can achieve. Overlook received this four-year designation in 2020 in recognition of its nursing team initiatives including those in healthcare delivery and research leading to exemplary innovation in patient care services.

The Leapfrog Hospital Safety Grade uses up to 30 national performance measures to produce a single letter grade representing a hospital’s overall performance in keeping patients safe from preventable harm and medical errors. Assigned to nearly 3,000 general acute-care hospitals across the nation twice annually, Overlook has scored straight A’s since 2021.



The future of health care is right here, right now thanks in part to you—our valued donors.

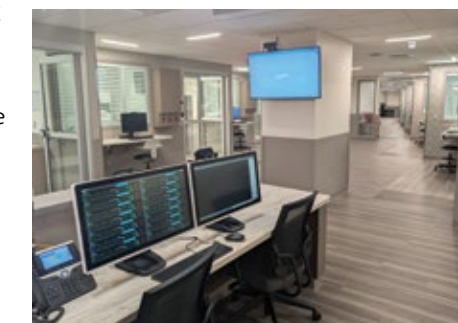
# OVERLOOK AHEAD

Of the \$170 million total cost to expand and renovate more than 90 percent of Overlook Medical Center, Overlook Foundation has committed to raising \$82.5 million. Thanks to our generous family of donors, we are approaching the finish line, with several major projects completed in 2024:

- An entirely new 8th floor atop the hospital’s East Wing now houses the state-of-the-art Wilf Family Cardiology Center, featuring single rooms that offer intensive, intermediate, and standard acute care without having to move patients when their clinical needs change. For those whose conditions are not stable enough for transfer to a regular hospital room, the new Kevin E. Bell, M.D. Critical Care Unit provides the highest level of medical monitoring and care around the clock.
- A complete renovation of the East Wing’s 7th floor is bringing together the entire neuroscience team in the F.M. Kirby Foundation Neuroscience Center, which houses the expanded Jeneil B. Reeves Neuro Intensive Care Unit and all single inpatient rooms.

- Now open in the 6th-floor Frank and Mimi Walsh Maternity Center are a new reception area, triage unit, renovated labor and delivery rooms, and two new operating theaters, with The Summit Foundation Nursery opening in early 2025. Work has begun on The Healthcare Foundation of NJ Newborn and Family Care Unit – the final phase of the center’s massive overhaul.

- Major renovations and updates to the Stacy Goldstein Breast Center continue, while the John E. Reeves Same Day Surgery Center now includes additional surgery suites, expanded patient registration and family lounge spaces, and enhanced pre- and post-op units.



“It is no secret that healthcare is changing fast,” says Overlook President Stephanie Schwartz. “We need to stay ahead of the curve, to continue to provide the best care to our community and meet the needs of our region.”

2024

## Operating Statistics

Outpatient Visits  
456,971

Emergency Department Visits  
108,276

Admissions  
22,332

Same Day Surgical Procedures  
12,482

Observation Cases  
5,921

Inpatient Surgeries  
3,980

Employees 3,831

Births 2,047

Attending Physicians  
1,804

Licensed Beds 513

Medical Residents 114

Average Length of Stay  
5.0 days



# Clinical Leaders Chart Bright Future

During the past year, Overlook welcomed two new clinical leaders to its administrative staff. Brian Radbill, M.D., MBA, FACP, a board-certified nephrologist and seasoned clinical executive, was appointed chief medical officer (CMO), responsible for leading a medical staff of over 2,100 physicians and advanced practice professionals. Heather Veltre, DNP, MS, RN, NEA-BC, one of New Jersey's most respected nursing leaders, was named chief nursing officer (CNO) and will guide a team of more than 1,000 nursing professionals.



We asked both to share their initial impressions of Overlook, their strategies for ongoing clinical excellence, and the role of philanthropy in meeting clinical care needs.

After a successful 25-year career with New York's Mount Sinai Health System, Dr. Radbill admits he was pleasantly surprised to see cutting-edge technologies such as advanced specialty robotics, HoloLens 2 mixed reality, Vivistim®, laser interstitial thermal therapy, and theranostics being used in a community hospital setting. "Overlook offers a level and complexity of capabilities that are typically only available to patients at major academic medical centers."

Dr. Radbill has been equally impressed with the level of engagement among medical staff members. "I was a CMO at two major hospitals for more than a decade prior to joining Overlook, and I can honestly say that the medical staff, the department chairs, and section chiefs here are incredibly engaged and forward thinking regarding how to maintain a unique community hospital-level of collegiality, teamwork, and respect as we continue to rapidly grow and bring on young new physicians. Physicians of all specialties genuinely love to work here. Their clinical expertise is celebrated and supported by the administration and the Foundation, ensuring that no need goes unmet."

**It's important for our team members and for our community to know that when they come to Overlook, they will be safe, secure, and will get the very best.**

For Heather, who most recently, served as vice president of patient care services and CNO at Bayshore Medical Center in Holmdel, Overlook's depth and breadth of services as well as the talent and longevity of team members are unique hallmarks. "There's not one person who has said that they do not like working here. They tell me they love it. It's a family. Some people have spent their entire careers at this organization, and this is a unicorn in nursing right now."

These new leaders agree that clinical excellence begins with physician and nursing leadership development. Moving forward, Dr. Radbill sees opportunities to grow and cultivate physician leaders who are actively engaged in decisions regarding strategic growth. By supporting and advocating for her team, Heather will devote considerable attention to empowering nurses to become confident competent leaders focused on the patient experience. "We are fortunate to have a very robust scholarship program, supported by the Foundation, for nurses or those who want to become nurses to really commit to their education and career goals," she says.

Together, the clinical partners will work to enhance clinical operational efficiencies and continue promoting Atlantic Health's fair and accountable workplace culture that fosters ongoing system improvements. "It's important for our team members and for our community to know that when they come to Overlook, they will be safe, secure, and will get the very best," concludes Heather.

# Current Leadership

## FOUNDATION BOARD OF TRUSTEES

Elizabeth Peck  
Chair

Eric Shick  
Vice Chair

Frank Perier  
Treasurer

Karina Calzadilla  
Secretary

Pradipto Bagchi  
Kishore Ballal  
Meri Barer  
Hakan Erdamar  
Muhammad Feteiha, M.D.

Maggie Hariri  
Akshay Kapoor  
Michael Katz  
Bev Luehs  
Marc Mandel, M.D.  
Jack Mann  
Huma Mirza, D.D.S.  
S. Colin Neill  
Samantha Pozner, M.D.

Richard Rosen  
Dina Santoro  
Richard Schrader  
Stephanie Schwartz  
Dean Serratelli  
Candice Steller  
Vincent Ursino Jr.  
Thomas Varkey  
Linda Walker  
Neil Weidner  
Michael Weinrauch, M.D.

## FOUNDATION ADMINISTRATION

Clelia Biamonti, Ph.D.  
Chief Philanthropy Officer

Marianne Devlin  
Director, Public Relations

Kerry Mowry  
Director, Corporations  
and Foundations

Kimberly Myler  
Director, Finance

Eileen Weiss  
Director, Principal Gifts

## AUXILIARY EXECUTIVE BOARD

Melissa Hartzell-Galileo  
President

Sally Allen  
Lillian Chern  
Meghan Schorr  
Ellen Serruto  
Kori Willis

## ATLANTIC HEALTH SYSTEM LEADERSHIP

Brian A. Gragnolati  
President and Chief  
Executive Officer

Robert E. McCracken  
Chair, Board of Trustees

## OVERLOOK MEDICAL CENTER ADVISORY BOARD

Frank M. Macioce  
Chair

Rev. Ronald Allen Sr.  
Dora E. Arias  
David Arminio  
Jon Bartlett, D.D.S.  
Jamel Boyer  
Matthew Buntin  
Mary Lou Carter  
James R. Coyle  
Ian Davies  
Mary Claire Givelber  
Paul Kieltyka  
Ralph J. Marra Jr.  
William Miron  
Barbara Niedz  
Jeffrey Peris  
Charles T. Rush Jr.  
Carlos Sanchez  
John Serruto  
Ellen Shelley, D.N.P.  
Joseph Starkey  
Vincent P. Ursino Sr.  
Allan L. Weisberg

## OVERLOOK MEDICAL CENTER ADMINISTRATION

Stephanie Schwartz  
President  
Senior Vice President,  
Atlantic Health System

Brian Radbill, M.D.  
Chief Medical Officer

Megan Rosenstein, M.D.  
Associate Chief Medical Officer

Heather Veltre, DNP, MS, RN,  
NEA-BC  
Chief Nursing Officer

Stella Visaggio  
Chief Financial Officer

Clelia Biamonti, Ph.D.  
Chief Philanthropy Officer

Connie Werner-Hopkins, R.N.  
Regional Director,  
Workforce Experience

## MEDICAL STAFF EXECUTIVE COMMITTEE

Sidney Glasofer, M.D.  
President

Maithili Rao, M.D.  
Vice President

Scott Sundick, M.D.  
Treasurer

Jessie Wilt, M.D.  
Secretary

Sharen Anghel, M.D.  
Peter Bolo, M.D.  
Elise Butkiewicz, M.D.  
Jay Chun, M.D.  
Mark Durante, D.D.S.

Colleen McManus  
Executive Director, Operations

Amy Haley, MSW, LSW  
Director, Risk Management

Jillian Carratala, R.N.  
Director, Nursing

Maria DeLauro, R.N.  
Director, Nursing

Vicki Kostis, R.N.  
Director, Nursing

Stefanie Colton  
Director, Network Development

Eric Spector  
Senior Manager,  
Marketing Strategy

Robert Seman  
Manager, Public Relations

Muhammad Feteiha, M.D.  
Fabio Frisoli, M.D.  
Devon Klein, M.D.  
Miles Levin, M.D.  
Stacey Murray-Taylor, M.D.  
Beth Natt, M.D.  
Uchenna Nwobu, M.D.  
Amish Patel, M.D.  
James Pierre-Louis, M.D.  
Samantha Pozner, M.D.  
Brian Radbill, M.D.  
Lee Starker, M.D.  
Andrew Tarulli, M.D.  
Heather Veltre, DNP, MS, RN,  
NEA-BC



## Friends Remembered

Since our last report, we have lost several beloved members of the Overlook Foundation family. We recognize their special contributions to Overlook and to our community, and we extend our heartfelt condolences to their families.

Helen A. Dowling

Donald M. Seifert

Jean M. Hoffman

Leonard H. Selesner

Edith Kreitler

Donna M. Walcott

Lloyd K. Rosevear

Judith Wexler

Richard H. Salzman

Lillie V. Zachary





**OVERLOOK  
FOUNDATION**

46 Beauvoir Avenue, Summit, NJ 07901

[www.overlookfoundation.org](http://www.overlookfoundation.org)