

# Clinical Leadership in a Healing Culture

Overlook Foundation Annual Report 2011


# Table of Contents

Introduction	
A Message from the Overlook Foundation	2
A Message from Overlook Medical Center	4
Special Events and Celebrations	6
Overlook Goes Full Steam Ahead with Trigereneration	8
Eating Disorders Program Brings Comprehensive Care Home	9
Anna’s Angels Spread Their Wings	10
Seeking a Healthier Lifestyle	11
Heritage Society	12
Rheumatic and Autoimmune Diseases – <i>Page Chapman</i>	14
Digestive Diseases – <i>Kimberly Rodrigues</i>	18
Epilepsy – <i>Elizabeth Rem</i>	22
Honor Roll of Donors	26
Thanks to the Overlook Auxiliary	44
Giving at a Glance – Centennial Campaign Celebrated	46
Overlook at a Glance	48
Leadership	50
Friends Remembered	52

On the cover....While Overlook’s top-notch medical staff addresses the clinical needs of our patients and their families, a host of volunteers provides such “healing” touches as music and massage, pet therapy and bedside visits.

*Clinical Leadership in a Healing Culture* was produced by the Overlook Foundation.

Writing by Renée Biale, RCB Communications.  
Graphic design and principal photography by Kathy Cacicedo.



*Clinical Leadership in a Healing Culture* – our 2011 Annual Report – thoughtfully sums up the patient experience at Overlook Medical Center, an experience that is as much high-touch as it is high-tech.

Here, you are greeted with a smile the moment you walk through our doors. Here, you will find the best and brightest healthcare professionals in their field willing to spend as long as it takes to understand you and your symptoms. Here, you will have access to some of the latest technology and clinical trials. And here, you will be encouraged to supplement traditional medical care with holistic therapies such as yoga, tai chi, meditation and more.

In these pages, you'll get an inside look at *Clinical Leadership in a Healing Culture* through the eyes of people just like you who recently shared their patient experiences at Overlook. Read about Page Chapman, an active outdoorsman whose rare autoimmune disease was diagnosed and successfully treated by physicians at Overlook's Institute for Rheumatic and Autoimmune Diseases; Kim Rodrigues, a young woman whose digestive disorder was eradicated with an innovative minimally invasive surgery tool; and Beth Rem, whose epilepsy has been kept in check thanks to the skills of Overlook neurologists and neurosurgeons.

We will spotlight new programs, services and facility enhancements designed to improve the health of our overall community such as Overlook Downtown, Anna's Angels, our expanded Eating Disorders Program and our new trigeneration system. We'll also highlight the culmination of our \$110 million *Next Century of Healing* Centennial Campaign and dedication of our Centennial Wall of donors, the opening of the Thomas Glasser Caregivers Center and other events.

As you read about patients' experiences and reflect on all that has been accomplished during the past year, we hope that you are proud and inspired to be a part of it all. Thanks to you, your generosity and your commitment to health care excellence in your community, clinical leadership in a healing culture is right here, nearby . . . at Overlook Medical Center.



■ “Together we have built a medical center that is the pinnacle of both clinical excellence and compassionate care.”

## A Message from the Overlook Foundation

Dear Friends of Overlook:

Many of you have seen firsthand how your donations strengthen Overlook. You have joined us in dedicating new facilities, introducing new technologies and welcoming healthcare professionals who are leaders in their field. You also have supported new health and wellness programs that supplement traditional medical care. Together we have built a medical center that is the pinnacle of both clinical excellence and compassionate care.

Our 2011 Annual Report – *Clinical Leadership in a Healing Culture* – celebrates and showcases your philanthropy.

Thanks to you and other caring individuals, corporations, foundations and community organizations, gifts and pledges to the hospital during the past year totaled nearly \$6 million despite continued economic uncertainty. Even more noteworthy, we established a new fundraising milestone with the completion of our \$110 million campaign, which was launched during our 2006 centennial.

Last fall, more than 150 longtime benefactors and new donors celebrated the culmination of *The Next Century of Healing: The Centennial Campaign for Overlook* with the unveiling of a magnificent donor wall, spanning the hospital's two-story lobby. The wall commemorates an impressive list of supporters whose gifts have funded construction and renovation projects, innovative technology and programs, and the recruitment of national-caliber physicians and researchers.

Just a few months earlier and steps away from the Centennial Wall, friends and supporters of Overlook Medical Center gathered to celebrate the opening of the Thomas Glasser Caregivers Center. The project – which received individual, corporate and organizational support within the Overlook family – exemplifies that philanthropy has no boundaries when it comes to meeting the needs of our community and beyond.

In early summer, the largest field of golfers in more than a decade converged on the fairways of Canoe Brook Country Club in Summit to take part in the 21st Overlook Foundation Golf Tournament. Sponsored by Bank of America Merrill Lynch, the event raised a record \$117,000 to benefit the Spine and Concussion Center at Overlook.

At our annual meeting, the Overlook Foundation Board of Trustees elected officers for 2011-2012: Stephen B. Stone, CLU, ChFC, chairman; J. Scott Magrane, vice chairman; Luke M. Beshar, CPA, treasurer; and Michael Gambro, Esq., secretary. The board also appointed five local residents to serve three-year terms: Barbara M. Daney, CPA, Pamela U. Gumpert, and Tracy P. McKee of Summit; David G. Hartman of New Providence; and Harold L. Morrison Jr. of Basking Ridge.

During the past year, we have demonstrated what our medical center can accomplish with a caring community of supporters. We invite you to read on and learn more about the patients, families and lives you have touched with your generosity.

With sincere appreciation for your support,



Stephen B. Stone  
Chairman



Ann M. Oliva  
Executive Director

## A Message from Overlook Medical Center

“We are fortunate to live in a community that values healthcare excellence as much as we do.”

Dear Friends:

Overlook Medical Center is a reflection of the community it serves. Like you, we value health, family, community, and compassion for others. Through our collaborative efforts and common values, we have built a destination of comprehensive exemplary care for patients and their families.

The culmination of an unprecedented \$110 million centennial campaign underscored what Overlook Medical Center means to our community. Longtime benefactors, together with new donors, demonstrated a collective commitment to support initiatives that touch lives and, in many cases, save lives. Our new Caregivers Center – the only hospital facility of its kind in the state – was inspired by the community and built for the community of caregivers who navigate the special needs of their loved ones.

Doctors and patients alike know that clinical excellence at Overlook comes in many forms. The Institute for Rheumatic and Autoimmune Diseases, which opened last April in Medical Arts Center I, is the only hospital-based institute of its kind in New Jersey dedicated to the diagnosis and treatment of a full spectrum of rheumatic and inflammatory musculoskeletal diseases.

Overlook’s Epilepsy Center has demonstrated expertise in all aspects of epilepsy management, leading to its designation as a Level 4 Epilepsy Center – the highest designation attainable and one of only two Level 4 centers in the state. Now, armed with magnetoencephalography, or MEG, doctors can more precisely monitor electrical activity in the brain and identify patients who previously would not have been considered for surgery.

The Atlantic Neuroscience Institute at Overlook Medical Center has become the region’s top provider of neuroscience care, with a depth and breadth of services that rivals – and in many cases tops – those seen in the nation’s largest hospitals. It is an accomplishment reinforced by our standing as the number one neuroscience hospital in New Jersey, based on a survey of Castle Connolly Medical Ltd.

Overlook’s Carol G. Simon Cancer Center received the American College of Surgeon’s Outstanding Achievement Award for cancer care, given to fewer than 15 percent of centers nationwide. A leader in minimally invasive cancer surgery, we are one of two hospitals on the East Coast equipped with ViKY – a voice-activated surgical robot for minimally invasive cancers of the pancreas and liver.

Overlook patients have access to the most promising treatment protocols in a variety of areas thanks to our participation in groundbreaking clinical trials. Through a partnership with MD Anderson Cancer Center in Houston, we are one of only a handful of sites nationwide to participate in a Low Risk Ovarian Cancer Screening Trial. Patients here are also benefiting from an experimental brain tumor vaccine and new medical protocols for multiple sclerosis and aneurysms.

We are fortunate to live in a community that values healthcare excellence as much as we do. The fact that we deliver it personally, professionally and compassionately is as much a reflection of who we are as those we serve – YOU!

Sincere thanks for your generous support,



Alan Lieber  
President



*The Thomas Glasser Caregivers Center at Overlook Medical Center offers family and friends of patients a tranquil space for rest, therapeutic services and resource referrals. The center features dedicated areas for counseling and private discussions, as well as a kitchenette and computers for caregivers to check e-mail and conduct online research.*

## special events and celebrations

### Thomas Glasser Caregivers Center Dedicated

Family and friends gathered in June to dedicate the Thomas Glasser Caregivers Center at Overlook, designed to help caregivers effectively manage the stress and special needs associated with caring for a critically, chronically or terminally ill loved one.

Located off the main lobby of the hospital, the center blends bedside social support services for caregivers with a tranquil space for rest, therapeutic services and resource referrals. The program also provides emotional support and encouragement to caregivers as they navigate health care services for their loved ones. Relaxation therapies such as massage, guided meditation, gentle touch therapy, reiki and pet visitation enhance the experience in the center, which also features dedicated areas for counseling and private discussions, as well as a kitchenette and computers for caregivers to check email and conduct online research.

Westfield resident Claude Fusco presented the idea of a caregivers center to Overlook Medical Center and Overlook Foundation administrators following the death of his wife, Kathryn, from lung cancer in 2006. The lead gift for the project came from the Thomas Glasser Foundation, created in memory of Summit resident Thomas Glasser who died in the World Trade Center on September 11, 2001.



*(top) Mary Pat Sullivan, Alan Lieber, Gerry Glasser, Meg Glasser, Claude Fusco, Sue Thomas and Lydia Nadeau; (foreground) Dylan and Luke Glasser  
(bottom) Claude Fusco (left center) with his children Diana, Claude and Emily*



## Overlook Supporters Receive Lifetime Achievement Awards

At the foundation's Ninth Annual Chairman's Dinner in May, Lifetime Achievement Awards were presented in four areas that are vital to the legacy of healthcare excellence that characterizes Overlook.

Dr. Sol and Meri Barer, the Community Service Award honorees, are dedicated to improving the health and well-being of children here and around the world. Their gifts to Overlook range from a giant cuckoo clock and stringless harp for the pediatric department, to a donation that made possible the Sol and Meri Barer Pediatric Unit of the Goryeb Children's Center at Overlook and helped fund the construction of a pediatric subspecialty outpatient facility in Overlook's Medical Arts Center II. The Barers recently received the Association of Fundraising Professionals' Outstanding Philanthropist Award and have been honored by CONTACT We Care – New Jersey's crisis hotline – for their devotion to enhancing healthcare and the atmosphere in which children receive it. They also support a number of educational institutions in the U.S. and abroad.

In the 1980s, Medical Service Award recipient Dr. Charles Dooley led local efforts to comply with federal government initiatives to control healthcare costs by establishing and directing a Professional Standards Review Organization in Union County and helping to develop the HMO Healthways. Merging his passions for medicine and aviation, he established the area's first air ambulance service based at Teterboro Airport. A past president of Overlook's medical staff, he has retired from his internal medicine practice with the Summit Medical Group, while continuing to participate in medical missions to Haiti at the Sacre Coeur Hospital in Milot. As a senior FAA-designated aeromedical examiner, he gives FAA medical exams to pilots and, occasionally, still flies corporate jets.

Louise Gili and Eleanor McGlaughlin, the Volunteer Service Award honorees, have been best friends and Overlook's "Busy Bees" for decades. Both retired employees of the Millburn School District, nurse Louise and teacher Eleanor continue to work side by side, sewing Christmas stockings and Easter bunny buntings for maternity department infants and Benji Bear hand puppets for pediatric patients. In addition to many combined years of service to the Millburn/Short Hills Red Cross, both women are active volunteers for their individual causes. Louise chairs the Overlook Auxiliary's Short Hills Twig 24 and has received accolades for her efforts to initiate an alumni association at her alma mater Seton Hall University and establish the Essex County



*Our 2011 Lifetime Achievement Honorees: Meri and Dr. Sol Barer, Eleanor McGlaughlin, Dr. Charles Dooley, Louise Gili, and Dr. Luther Clark (on behalf of Merck).*

School Nurse Association; Eleanor has been honored for her work on behalf of her alma mater Arcadia University, Millburn Library and Neighborhood House.

Corporate Service Award recipient Merck has been a longtime corporate partner to Overlook through the Merck Company Foundation. That partnership has included generous corporate philanthropy, board leadership and collaborative community health education efforts. Funds from employee matching gift programs have benefited many facilities, technology and program enhancements at Overlook, including the neuroscience institute, emergency department, ambulatory suite, employee child care center, Healthy Avenues Van and Carol G. Simon Cancer Center. Additionally, several community-minded executives have provided their service and expertise to Overlook and the Overlook Foundation by serving as medical center and foundation board members.

## Dr. Max Gomez Delivers Alzheimer's Lecture

Nine-time Emmy Award winner Dr. Max Gomez, medical correspondent for CBS News, visited Overlook's Wallace Auditorium in April to address "Alzheimer's Disease: How Do You Know, What You Should Do." One of television's most respected medical journalists, Dr. Max has reported for *Dateline*, *The Today Show* and *48 Hours*. His concern with the alarming increase in Alzheimer's incidence and the implications for our society is uniquely personalized due to his father's diagnosis a few years ago.

This event was the fourth in a series of lectures on health and the public interest made possible by a generous gift from the Thomas Glasser Foundation and endowed through the Overlook Foundation.



*Dr. Gerry Glasser, Dr. John Halperin, Dr. Max Gomez, Alan Lieber, Steve Stone and Dr. Roger Kurlan*

*Chan and Jane Coddington with Dr. Max Gomez*

A man in a dark suit and striped tie stands in a complex industrial facility. The background is filled with large yellow pipes, blue machinery, and various mechanical components. The lighting is a mix of warm and cool tones, highlighting the intricate details of the equipment.

## Overlook Goes Full Steam Ahead with Trigeneration

*Leads New Jersey Hospitals in Energy Efficient Initiative*

At Overlook, creating healthier communities goes beyond providing leading-edge medical technologies, facilities and services. It also includes utilizing new ways to enhance energy efficiency and improve the medical center's impact upon the environment.

Last year, Overlook was the first hospital in the state to install a combined cooling, heating and power trigeneration system on the Overlook campus that will enhance energy efficiency, reduce costs and benefit the environment by lowering emissions of carbon dioxide by 10,891 tons per year – the equivalent of removing the carbon emissions of 1,799 cars or the amount of carbon that would be absorbed by 2,244 acres of forest.

Plans to move forward with the project were fueled last summer when Overlook received a \$1 million grant from the New Jersey Clean Energy Program, administered by the state's Board of Public Utilities.

**“Overlook has been recognized for many of our efforts to ‘go green.’”**

“Overlook has been recognized for many of our efforts to ‘go green,’” says Robert Peake, director, construction and facilities management, Atlantic Health System. “The Clean Energy Program grant helped fund the \$5 million project and allowed us to implement a project that recycles our energy and has significant environmental benefits. Trigeneration will reduce the cost of replaced energy by more than 60 percent while providing a redundant electrical generating capability that will allow us to operate independent of grid-supplied power during a power outage.”

To be considered for state funds, the grant process required that institutions be rated in the top 25 percent according to the national Energy Star Program efficiency survey. Overlook ranks in the top 17 percent for energy efficiency.

Overlook partnered with Medesco, LLC to build and install the system that will produce four megawatts of electricity onsite by harnessing the waste heat produced by generators and substituting steam formerly created by the existing boilers. The use of an absorption chiller will create chilled water for air conditioning and dehumidification. Lower grade domestic hot water produced by the system will be used by the hospital as well.

Once Overlook is newly energized by its leading-edge trigeneration system this spring, Atlantic Health plans to undertake similar projects at Morristown and Newton medical centers in the coming years.

*Bob Peake*

## Eating Disorders Program Brings Comprehensive Care Home

As recently as a year and a half ago, adolescent patients who were considered too ill to receive treatment in the Eating Disorders Program at Atlantic Health were referred to other facilities to receive their care. Oftentimes, these young patients were treated with adults with eating disorders in facilities far from home. Many of them never returned to Overlook for follow-up care and monitoring. Funds were desperately needed to expand Overlook's Eating Disorders Program with the staffing, resources and space to include a partial hospitalization program (PHP) and inpatient program.

That wish was fulfilled thanks to the generosity of Overlook donors who collectively raised \$425,000 at the Overlook Foundation's 2008 Passion to Lead Gala. Proceeds from the gala gave the Eating Disorders Program the boost it needed to move forward with a strategic plan to expand its facility and range of services.

In June 2010, the Eating Disorders Program opened in the brand-new Medical Arts Center II building on the Overlook campus. The new space enabled the addition of a partial hospital program in which patients are on site for 40 hours of treatment per week. Patients in the PHP receive individual and family therapy, psychiatric care, supervised meals and snacks, yoga and art therapy in addition to medical monitoring. Patient and family involvement is an integral part of the program.

Today, the Eating Disorders Program at Atlantic Health is the only eating disorders program in the state to provide comprehensive treatment exclusively for adolescent patients between the ages of 12 and 21 years as both inpatients and outpatients. The medically based program offers education and family-focused treatment for anorexia nervosa, bulimia nervosa and related disorders.

As awareness of the program grows, so does the number of patients seeking help for eating disorders. In 2011, the number of inpatients doubled expectations. The intensive outpatient program, which meets eight and a half hours per week, is on target to have 600 patient visit days. These accomplishments did not go unnoticed, as the Eating Disorders Program earned Overlook's Clinical Excellence Award for 2011.



*Terry Keyser, Dr. Omar Canosa, Barbara Hale, Dr. Leslie Sanders, Marianne Vafiadou, Sue Carleton and Christie Mikytuck*

"Eating Disorders have the highest mortality rate of any mental health diagnosis, making it one of the most difficult illnesses to treat," observes Leslie Sanders, M.D., medical director. "The medical problems associated with eating disorders are complex, can be life-threatening and result in long-term, irreversible morbidity. To compound this issue, adolescents with eating disorders can be very difficult to engage. Our caring staff, our multidisciplinary medical resources, and our personalized family-centered approach to recovery is putting us on the map as a center of excellence for the treatment of eating disorders."

To learn more about the Eating Disorders Program at Atlantic Health,  
call (908) 522-5757 or visit  
<http://www.atlantichealth.org/goryeb/our+services/eating+disorders+program/>

## Anna's Angels Spread Their Wings Educating Communities About Health Care Decisions



Discussing end-of-life decisions with loved ones is difficult but even more difficult when those loved ones are in the hospital with a life-limiting illness and unable to make their wishes known. Relatives, suddenly confronted with the inevitability of their loved one's death, may do what they think is best rather than what their loved one would have wanted.

"It's a terrible dilemma for families and one which can be avoided with advanced planning," says Jeanne Kerwin, ethics and palliative care coordinator at Overlook Medical Center, who is spearheading a community-based effort to educate people of all ages about the importance of ensuring that their wishes are followed should they find themselves in an unexpected medical condition. The initiative has received funding from Overlook's Community Benefits Fund as well as the medical staffs of Overlook Medical Center and Morristown Medical Center.

At the heart of the program is *Anna's Story* – a dramatic 22-minute video which enacts what happens to Anna, an 86-year-old nursing home resident, who finds herself in the hospital with no hope for recovery and unable to communicate her end-of-life wishes. Because Anna did not create an Advance Directive for Health Care nor discuss her end-of-life wishes with her family, her granddaughter Christina does what she thinks is best for her grandmother, though not necessarily what Anna would have wanted. *Anna's Story* was written and created by Overlook's Palliative Care Team and produced and directed by the Multimedia Communications team at Horizon Blue Cross Blue Shield of New Jersey. The thought-provoking video won a bronze award in the 30th Annual Telly Awards competition, which drew over 13,000 entries from 50 states and numerous countries around the world.

*Anna's Story* is now an educational tool used by Anna's Angels – a group of 44 Atlantic Health System nurses and health care professionals who generously volunteer their time to go into their communities to discuss health care decision-making with groups at senior centers, schools, health clubs, churches and other venues. The video is used to stimulate discussion and education about the concepts of palliative care, advance care planning, nursing home care, hospice and improved care for all patients nearing the end of life. Anna's Angels help participants navigate what they need to know, coach them on how to have conversations with their loved ones and doctors, and advise them on how to prepare documents that help loved ones and clinicians provide care that is in keeping with their wishes and best interests.

"Anna's Angels is a natural extension of our Palliative Care Program and healing culture," says Nancy Gross, palliative care community liaison at Overlook Medical Center/Atlantic Health. "It is important to have discussions that help physicians and families navigate options in palliative care and hospice services that support the physical, emotional and spiritual needs of patients and loved ones. Death is not an easy topic to discuss, but Anna's Angels make it easier."

For more information about Anna's Angels, call the Anna's Angels Hotline (908) 598-7906.

*Jeanne Kerwin, Kathleen Lynch and Nancy Gross*

Kent Place was thrilled to welcome Nancy Gross to campus for a community conversation about the ethical decision-making processes around health care concerns which may potentially affect people as they age. Her facilitation of a thought-provoking discussion ignited a meaningful and emotional response from all who attended. The combination of students, parents and grandparents willing to share their stories created a transformative experience. They provided a profound inter-generational perspective on ethical and biomedical issues.

—Susan C. Bosland  
Head of School  
Kent Place School

## When You're Seeking a Healthier Lifestyle, You Can Always Go . . . Downtown

Nestled among the clothing boutiques, fine restaurants and storefronts lining Summit's bustling main thoroughfare is Overlook's latest initiative that partners community health and integrative medicine to improve the health of the community – Overlook Downtown. The center, located at 357 Springfield Avenue, offers a variety of health assessments, classes, lectures, and holistic health services through Atlantic Healthy Lifestyles – Integrative Medicine and Overlook Medical Center Community Health. Resembling a beautifully appointed high-end spa, Overlook Downtown is open six days per week to anyone seeking to care for their mind, body and spirit. What's even better is that many programs are free, while others charge a nominal fee.

"Know Your Number" Mondays feature screenings for diabetes, cholesterol, hearing and bone density, along with occasional book signings, programs and lectures by physicians from 10:00 a.m. until 3:00 p.m. Classes for yoga, pilates, tai chi, qigong, Zumba, meditation and Nia are held Tuesdays through Fridays. Individual sessions for nutrition counseling, massage, acupuncture and other services can also be scheduled.

"We all know that a healthy lifestyle can go a long way toward reducing the risk of heart disease, diabetes, stress and other chronic illnesses," says Joyce Passen, BSN, MBA, manager, Overlook Community Health, "but integrating changes into your daily life is not always easy. Overlook Downtown provides a place to learn more about your health, explore integrative medicine techniques and develop new habits that support a healthier lifestyle. Plus, it's much easier when it's fun and works with your schedule, your budget and your interests."

"The response from the community has been tremendous," comments Emilie Rowan, manager of Atlantic Integrative Medicine. "We've seen more than 1,300 clients in the last five months, and have partnered with local businesses and community groups to hold special events. People are realizing that they can positively impact their health by controlling diet, exercise and stress; and they are viewing Overlook Downtown as an important resource in that journey."



For hours, class schedules and upcoming events  
at Overlook Downtown,  
call (908) 598-7997 or visit  
[http://www.atlanticealth.org/overlook/our+services/  
community+health/overlook+downtown](http://www.atlanticealth.org/overlook/our+services/community+health/overlook+downtown)

*Emilie Rowan and Joyce Passen*

### Menu of Services

#### Assessments

Holistic Health Assessments/Lifestyle Assessments (\$70/hour)  
Nutritional Assessments (\$45/hour)

#### Individual Sessions (\$45/hour)

Nutrition Counseling  
Lifestyle Coaching  
Massage

Jin Shin Jyutsu  
Reflexology  
CranioSacral

Private Yoga and Tai Chi Classes

#### Classes (\$10/class)

Yoga  
Pilates  
Tai Chi  
Qigong  
Zumba  
Dance Fit  
Meditation  
Nia

# Heritage Society

## Donors Discover Significance through Deferred Gifts

Overlook Medical Center can recruit top nursing graduates because of an endowment that permits Overlook to offer tuition assistance in return for a student's commitment to work at Overlook after graduating. A bequest from the Mascuch family of Short Hills started that endowment. A recent bequest from Dr. Roland Roecker makes it possible for the medical center to care for behavioral health patients who cannot pay for treatment. Ruth Hardin's legacy to Overlook ensures that the work of chaplains continues. Lillian Bird and her sister, Dorothy, each left unrestricted gifts in their wills to Overlook. Large or small, their gifts will touch lives for decades to come.

Over the past 18 months, 11 other estate gifts have strengthened cardiac services, the hospice program, the microbiology department, and other programs with nearly \$300,000 in support. During the same period, 10 living donors agreed to benefit Overlook with either a gift from their estate or through a gift that pays income to them now but will eventually come to the foundation. In all, 151 people belong to the foundation's Heritage Society for such donors, the most in the society's history. Others may join by notifying the foundation that they have included the foundation in their estate plans or have created a charitable gift annuity, charitable lead or remainder trust, retained life estate in real estate, or life insurance policy with the foundation named as owner or beneficiary.

Heritage Society membership carries such benefits as staff visits, flowers, and a free newspaper during any hospitalization at Overlook and annual influenza vaccinations when supplies and regulations permit. To learn how to accomplish something significant through your estate plan, please contact Kenneth Cole at (908) 522-2181 or [kenneth.cole@atlantichhealth.org](mailto:kenneth.cole@atlantichhealth.org).

### Heritage Society Members

Anonymous (1)  
Barbara and Alfred Alleyne  
Anne S. and Paul A. Babineau  
John and Frances Barker  
Mr. and Mrs. Amos T. Beason  
Mr. and Mrs. John P. Bent Jr.  
Ms. Renae C. Biale  
Clelia Biamonti and Adam Psichos  
Ms. Catharine N. Blanchard  
Miss Audrey L. Boise  
Marylane T. Burry  
Teresa C. Byrne  
Mr. and Mrs. Ezra E. Carr  
Mr. David J. Cesarz  
Diane J. Cesarz  
Carol and Ed Cimilluca  
Mr. and Mrs. F. Chandler Coddington Jr.  
Kenneth D. Cole  
Mr. and Mrs. John W. Cooper, Esq.  
Dr. H. William Diefendorf  
Mr. David G. Dietze  
Mrs. Jeanne B. Dillon  
Alice and Bob Dillon  
Mrs. Louise Donner  
Christel Dynes  
Timothy and Jennifer Erday  
Mrs. James B. Farley  
Mr. and Mrs. Terrence M. Farley  
Amanda and Steve Ford  
Mrs. William E. Ford  
Mrs. James L. Gilfillan  
Ms. Louise E. Gili  
Dr. and Mrs. John J. Gregory Sr.  
Mr. and Mrs. Gerald A. Hale  
Mr. Lee M. Hale  
Cassandra Hardman  
Kitty and Dave Hartman  
Mary D. Herberich  
Mr. and Mrs. James A. Hislop  
Mr. and Mrs. Warren E. Hoffman  
Helen K. Hopkins  
Kay and Tom Inglesby  
Mr. and Mrs. Frederick Johnson  
Mr. Herbert W. Kirby  
Mr. and Mrs. Carl J. Kreidler Jr.  
Ms. Edith Kreidler  
Amy Liss  
Dr. and Mrs. Norman L. Luka  
Mr. and Mrs. Michael Mastroianni  
Ms. Ellen L. Miller  
Mr. and Mrs. Gabriel L. Miller  
Mrs. Ward H. Nessen  
Mrs. John L. Newbold III  
Dr. and Mrs. E. Richard Nightingale  
Mrs. Neil V. Norelli  
Dr. V. Nossiter  
Anne and Ed Olesky  
Ann M. Oliva  
Mr. and Mrs. Martin J. Oppenheimer  
Ms. Nancy Ori  
Mr. and Mrs. Henry G. Parker III  
Mr. and Mrs. Roger B. Parsons  
Charles Perko Jr.  
Dorothy Perko  
Mr. and Mrs. Frank Perrotta  
Julie A. Planck  
Betsy Potter  
James R. Prisco Sr.  
Mr. and Mrs. William A. Quinn  
Mrs. William C. Ridgway  
Frances K. Robinson  
Mr. and Mrs. Vincent Romano  
Mrs. Christos Romas  
Mrs. Hal Rose

Shirley Sugerman Rosenberg, Ph.D.  
 Dr. Sorosh F. Roshan  
 Mr. and Mrs. Peter A. Santoriello  
 Mr. Marcus E. Scarkos  
 Dr. Talaxi and Mitha Shah  
 Mr. and Mrs. Bartholomew A. Sheehan Jr.  
 Arline Siegel  
 Sally W. Simons  
 Mrs. Catherine V. Smith  
 Mrs. Robert H. Smith  
 Linda and Watson B. Smith Jr.  
 Mr. and Mrs. Michael J. Sniffen  
 Barbara and Eugene Speni  
 Mary Louise Sprague  
 Stephen and Linda Stone  
 Helen and Stanley Stroz  
 Ms. Melanie C. Sze  
 Dr. Fatimah A. Tahil and Mr. John Reilly  
 Susan M. Thomas  
 Mr. and Mrs. Norman B. Tomlinson  
 Mr. and Mrs. Harry L. Tower Jr.  
 Theresa Turko  
 Priscilla and Vincent Ursino Sr.  
 Donna and Jack Walcott  
 Ms. Carol Way  
 Richard and Elizabeth Wolffe  
 Louis and Lillie Zachary



*(clockwise from top left)*  
*Nancy Tripp and Lee Hale*  
*Bud and Linda Smith with Annette Mackie*  
*Diane Cesarz and Jeanette Turley*  
*Millie Cooper, Lenore Ford and Amy Liss*  
*Lori Tower and Melanie Sze*



## ■ Detecting the Undetected



Page Chapman

**“Thanks to his expertise and attention to detail, Dr. Kramer gave me my life back.”**

### Unlocking the Cure to Rheumatic and Autoimmune Diseases

Whether he’s carving a trail down Baldy Mountain, hiking through Galena Pass or casting a line into the Big Wood River, 73-year-old Page Chapman is happiest in Sun Valley, Idaho, where the New Vernon native spends much of his retired life.

Last June, however, the active outdoorsman was feeling uncharacteristically unenergetic. Following successful surgery to remove a cancerous tumor from his bladder, Page lost his appetite and rapidly dropped weight. He became anemic; he had a low grade fever, aches and pains in his head, neck and legs, numbness in his right arm, and some dizziness and eyesight problems.

After initial tests failed to reveal a problem, Page’s doctors suggested he consult Dr. Neil Kramer, co-director of Overlook’s new Institute for Rheumatic and Autoimmune Diseases.

“Dr. Kramer spent two hours with me,” says the former banker, “first asking me about my family history, my lifestyle and my symptoms, and then giving me a thorough examination. I had never spent that much time in a doctor visit before!”

Dr. Kramer suspected that Page was suffering from giant cell arteritis, a chronic inflammation of the large arteries branching from the aorta to the head, neck and upper body, which can result in permanent blindness if left untreated. To be certain, Dr. Kramer scheduled a biopsy of the temporal artery. Within days, his diagnosis was confirmed.

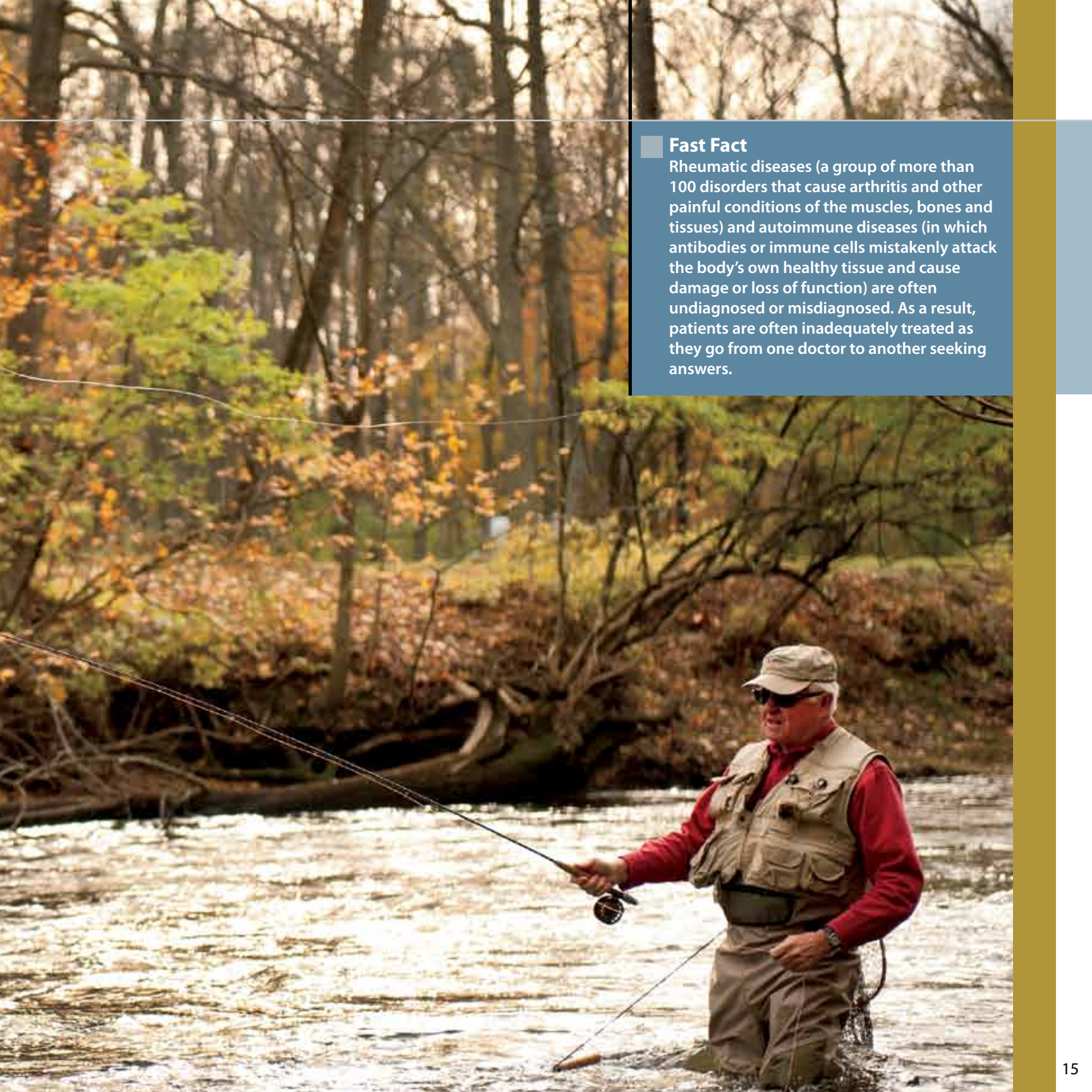
Treatment of giant cell arteritis involves a high dose of the corticosteroid, prednisone, which may have some serious side effects. Since Page was eager to return to Sun Valley during his treatment, Dr. Kramer monitored his progress long distance and gradually reduced the dosage of the powerful drug.

“I was very impressed with Dr. Kramer’s accessibility and responsiveness during that time,” recalls Page. “Although he was nearly 3,000 miles away, we stayed in touch constantly by phone, fax and email. The care I received – even from a distance – was first class.

“Thanks to his expertise and attention to detail, Dr. Kramer gave me my life back. I’ve returned to my normal weight and regained strength and muscle tone through physical therapy. I’m fishing, hiking and biking again; and now I’m looking forward to ski season.”


If, as the author Norman Maclean once said, “all things merge into one, and a river runs through it,” there’s a good chance Page will be there in his waders.





### Fast Fact

Rheumatic diseases (a group of more than 100 disorders that cause arthritis and other painful conditions of the muscles, bones and tissues) and autoimmune diseases (in which antibodies or immune cells mistakenly attack the body's own healthy tissue and cause damage or loss of function) are often undiagnosed or misdiagnosed. As a result, patients are often inadequately treated as they go from one doctor to another seeking answers.



“We are excited at the opportunity to advance clinical research in the field of rheumatology and autoimmune diseases at Overlook. It will give our patients access to the next generation of treatment options.”

— Neil Kramer, M.D.

## Clinical Leadership in a Healing Culture

The Institute for Rheumatic and Autoimmune Diseases at Overlook Medical Center opened last April in Suite 211 in the Medical Arts Center I.

A team of board-certified rheumatologists and support staff use detailed physical examinations, careful patient histories, and sophisticated immunologic and imaging tests to diagnose and treat the full spectrum of rheumatic and autoimmune disorders, including

- Inflammatory arthritis (rheumatoid and psoriatic arthritis and ankylosing spondylitis)
- Osteoarthritis
- Systemic Lupus Erythematosus
- Sjögren's Syndrome
- Myositis
- Vasculitis
- Scleroderma
- Polymyalgia Rheumatica
- Gout and Pseudogout

**“Although many rheumatic diseases affect the joints, the inflammatory conditions we deal with really know no boundaries and can affect many different organ systems, making a multidisciplinary approach essential to effective diagnosis and treatment.”**

**—Elliot Rosenstein, M.D.  
Co-Director  
Institute for Rheumatic and Autoimmune Diseases**

## A Closer Look at the Institute for Rheumatic and Autoimmune Diseases at Overlook Medical Center

The only hospital-based institute of its kind in New Jersey, it

- has an on-site infusion center, staffed by specially trained infusion nurses. This affords the institute the ability to provide supervised patient care during infusion therapy and engage in clinical research, since many research trials involve injected and infused medications.
- is led by Co-Directors Neil Kramer, M.D., and Elliot D. Rosenstein, M.D., both of whom have had decades of experience in the diagnosis and treatment of systemic rheumatic and other inflammatory musculoskeletal diseases and are nationally recognized leaders in the field of rheumatology.
- offers access to a complete range of treatment options: oral and injectable medications, surgery, assistive devices, diet plans, exercise and pain management methods, such as cognitive and integrative therapies.
- offers postgraduate medical education and training programs for medical residents, community physicians and the public.
- includes a clinical research center to allow access to cutting-edge therapies for rheumatic and autoimmune diseases.
- will enhance access to high-quality rheumatic and autoimmune disease patient care in the metropolitan area.



## Kim Rodrigues

**ViKY – a voice-activated camera that is inserted into a patient’s body and can be controlled through the surgeon’s foot or with simple voice commands via a headset. The robotic surgical device makes it possible to perform minimally invasive surgeries with fewer incisions, more precision, less bleeding, less scarring, less pain and quicker recoveries.**

## Robotics in the Operating Room

### *ViKY Makes Surgery for Digestive Disorder Easier to Swallow*

Food poisoning is never a pleasant experience; but for 24-year-old Kimberly Rodrigues of Union, it was a blessing in disguise.

One Sunday evening last September, Kim ate something that made her violently ill. In the morning she was still sick, so her husband took her to Overlook’s Emergency Department. Doctors admitted Kim for dehydration and ordered a CT scan of her stomach. The scan revealed a suspicious mass, which a subsequent MRI showed to be a choledochal cyst on the bile duct of Kim’s liver.

“The doctors explained that the cyst was a congenital abnormality that I had been living with my entire life,” says Kim. “I never had any symptoms associated with it, but there is a 70 percent chance of it developing into cancer if it is left there. If it had not been for the food poisoning, it may have gone undetected.”

Kim, who works as a surgical scheduler in the Breast Care Center at Summit Medical Group, was suddenly confronted with the irony of scheduling her own surgery to remove the cyst along with the abnormal portion of her bile duct. A highly touted surgeon at a prestigious New York hospital told Kim that her surgery would require an incision from her breast bone to her belly button. Dr. Andrew Gumbs, an oncology surgeon who specializes in minimally invasive hepatic-pancreatic-biliary surgery at Overlook, told Kim that her surgery could be performed laparoscopically with just three tiny incisions, each measuring one centimeter.

“I must have talked to Dr. Gumbs at least 10 times before the surgery to make sure that I understood exactly what he was going to do,” recalls Kim. “He spent hours explaining things to me and other members of my family so that we all felt comfortable about the procedure.”

Dr. Gumbs successfully removed the choledochal cyst and repaired Kim’s bile duct with the help of ViKY – a voice-activated camera that is inserted into a patient’s body and can be controlled through the surgeon’s foot or with simple voice commands via a headset. The robotic surgical device makes it possible to perform minimally invasive surgeries with fewer incisions, more precision, less bleeding, less scarring, less pain and quicker recoveries.

“Despite the often complex nature of minimally invasive surgery, it’s a win-win for everyone – the patient, the surgeon and our health care system,” comments Dr. Gumbs, a professor of endoscopic digestive surgery at the University of Genoa, Italy, and previously director of minimally invasive hepatobiliary surgery and surgical associate director of the Minimally Invasive Surgery and Endoscopic Skills Fusion Laboratory at Fox Chase Cancer Center in Philadelphia.

Kim couldn’t agree more. “I was back to work one month after the surgery, back to my normal activities and, best of all, back on the beach with confidence,” she beams.



### Fast Facts

Approximately 60 to 70 million people are affected by digestive disorders each year. In 2004, there were more than 236,000 deaths in the U.S. with a digestive disease as an underlying cause (representing nearly 10 percent of all deaths). Thirty-one percent of all ambulatory surgical procedures are related to digestive diseases; and more than half of the total number of medications prescribed are for digestive disorders. All of this adds up to an annual cost of approximately \$141.8 billion within our healthcare system.



**“Despite the often complex nature of minimally invasive surgery, it’s a win-win for everyone – the patient, the surgeon and our health care system.”**

**– Andrew Gumbs, M.D.**

## Clinical Leadership in a Healing Culture

Overlook's Digestive Health Program involves a multidisciplinary team of gastroenterologists, nurses, surgeons, radiologists and pathologists dedicated to providing patients with gastrointestinal, liver, pancreatic or nutritional disorders the best possible care in a pleasant and comfortable environment. The digestive health specialists work collaboratively in both the outpatient and inpatient setting. Patients with complex gastrointestinal and pancreatic problems are often transferred from other institutions in New Jersey to the care of our digestive health expert physicians. These health care professionals routinely treat disorders such as

- Achalasia
- Acid reflux/heartburn
- Barrett's Esophagus
- Cancer of the esophagus, stomach, small intestine and colon.
- Celiac disease
- Crohn's disease and ulcerative colitis
- Diverticulitis
- Gallstones
- Hemorrhoids
- Hepatitis
- Irritable bowel syndrome
- Liver cancer
- Liver diseases
- Pancreatic cancer
- Pancreatic cysts
- Pancreatitis, acute and chronic
- Polyps of the digestive tract
- Swallowing disorders
- Ulcers of the stomach and duodenum

**“Advances in technology and endoscopic procedures allow us to cure many benign and malignant diseases of the digestive system that were previously untreatable. There is an exciting revolution under way in this field, and I'm proud to be a part of it here at Overlook.”**

—Tamir Ben-Menachem, M.D., M.S.  
Gastroenterologist

## A Closer Look at Overlook's Digestive Health Program

From diagnostic testing to minimally invasive surgical treatment, Overlook's digestive health specialists perform a variety of procedures, including

- 48-hour Bravo pH study
- Anal manometry
- Argon plasma coagulation
- Celiac plexus nerve block by endoscopic ultrasound guidance
- Cholangioscopy and pancreatoscopy with the SpyGlass™ device
- Colonoscopy
- Confocal laser endomicroscopy
- Endoluminal pseudocyst drainage
- Endoscopic foreign body retrieval
- Endoscopic mucosal resection and dissection
- Endoscopic retrograde cholangiopancreatogram (ERCP)
- Endoscopic ultrasound
- Enteroscopy
- Esophageal motility study
- Flexible endoscopic evaluation of swallowing with sensory testing (FEESST™)
- Flexible sigmoidoscopy
- Laser fragmentation of bile duct stones using the FREDDY device
- Laparoscopic surgical procedures (including ViKY)
- Paracentesis
- Radiofrequency ablation of Barrett's using the HALO device
- Percutaneous endoscopic gastrostomy (PEG) or jejunostomy feeding tube placement
- Small bowel capsule procedure
- Self expanding metal stent placement
- Sphincter of Oddi manometry
- Upper endoscopy

## Treating Epilepsy with Surgical Precision

*MEG Technology Pinpoints Brain Activity*

### Elizabeth Rem

Elizabeth (Beth) Rem was in her early fifties when friends and family noticed something was amiss.

“They told me that I would routinely stop talking in mid-sentence and turn my right arm,” recalls Beth. “Oddly, I was never aware of it and told them they were crazy. Then one day at work, I walked into the lunch room, dropped my lunch on the floor and stood motionless without realizing it. One of my co-workers took me to a hospital emergency room and the doctor there suspected I had had an epileptic seizure.

“I refused to believe him,” says Beth. “I had a childhood friend with epilepsy, who I had witnessed having major seizures. As far as I was concerned, my symptoms were nothing like that and I was not ready to accept the possibility that I might have epilepsy.”

Months later, Beth had a minor automobile accident, which she couldn’t recall happening. Family members grew increasingly alarmed, took away her car and forced her to see a neurologist in New York. Beth remembers traveling all the way from her rural Lake Hopatcong home to Manhattan via bus to meet with the doctor for 10 minutes. Following a cursory evaluation, he prescribed medication which, according to Beth’s friends and family, did not help stop the partial seizures, memory lapses and automatic behavior that were occurring with greater frequency.

At the suggestion of a friend who works for Atlantic Health, Beth met with Dr. Jeffrey Politsky, a neurologist specializing in epilepsy and seizure disorders at Atlantic Neuroscience Institute’s Epilepsy Center at Overlook Medical Center.

“Dr. Politsky met with me for more than an hour,” remembers Beth. “He made me feel like I was the most important person in the place. But I was still not convinced I had epilepsy until weeks later when he videotaped me and showed me what others had been observing all along. I watched myself reading the newspaper, suddenly put the newspaper down and turn my right hand. I was completely unaware I was doing that.”

After unsuccessful trials of anti-seizure medications, Beth underwent several weeks of intracranial monitoring at the epilepsy center and learned that she was a candidate for left hemisphere epilepsy surgery. By then, she was having multiple “mini-seizures” every day, each lasting 20-30 seconds. Three of the region’s top neurosurgeons – Drs. David Wells-Roth and Ronald Benitez of Atlantic’s Neuroscience Institute, and Dr. Theodore Schwartz, attending neurological surgeon at New York-Presbyterian Hospital – participated in Beth’s epilepsy surgery at Overlook. When she was discharged, Beth assumed she would have a shaved head. Instead, she had all of her hair and only a small scar. Best of all, she was seizure-free.

“What stands out most for me was not only the outstanding care but the outstanding people I met at Overlook,” says Beth. “From the friendly gentleman who always greeted me in the lobby and Barbara who brought me a newspaper every day during testing, to the caring doctors and nurses who always returned my phone call and remembered my name even a year after the surgery.”

Now, at 59, Beth is happily resuming her life in the lake community she has called home since she was 10 . . . a little older, a little wiser and a little more grateful for family, friends and health care professionals who were there when she needed them most.





## Fast Facts

Epilepsy is a complex condition characterized by recurrent seizures or disruptions in the brain's normal electrical activity. It affects approximately three million Americans, including more than 300,000 children younger than 15 and more than 500,000 people older than 65, making it the third most prevalent neurological disorder in the United States.



## ■ Clinical Leadership in a Healing Culture

### *A Closer Look at Atlantic Neuroscience Institute's Epilepsy Center at Overlook Medical Center*

Atlantic Neuroscience Institute's Epilepsy Center at Overlook Medical Center is designated a Level 4 epilepsy center (the highest level attainable) from the National Association of Epilepsy Centers. This designation reflects round-the-clock availability of board-certified neurologists with special expertise in epilepsy management, as well as such technology as continuous video-EEG monitoring to allow more precise diagnosis of seizure disorders and advanced neurosurgical facilities and expertise to treat epilepsy surgically.

Overlook's Epilepsy Center is the first center in New Jersey – and one of only a few in the country – to evaluate epilepsy patients using magnetoencephalography (MEG), a noninvasive procedure that uses precise sensors to detect and record the magnetic fields associated with electrical activity in the brain. It enables physicians to pinpoint precisely where epileptic activity originates, determine whether a patient is a good candidate for surgery, and plan the surgery itself.

Our dedicated medical team includes board-certified, epilepsy fellowship-trained neurologists, epilepsy nurses and nurse practitioners, neurodiagnostic technologists, neurophysiologists and neuropsychologists, who work with patients and their referring physician to diagnose seizure disorders in adults and children, and formulate an individualized plan of treatment and follow-up care.

Pediatric epilepsy monitoring and treatment is provided at Goryeb Children's Center at Overlook Medical Center with a team of specialists that include pediatricians, pediatric neurologists and epilepsy specialists.


Treatment options include

- Ketogenic diet
- Modified Atkins diet
- Vagus nerve stimulator
- Anticonvulsant medication
- Clinical drug trials

Before treatment options can be discussed in earnest, the epilepsy specialist will often recommend some form of electroencephalography, which measures brain wave activity and allows the doctor to properly diagnose and classify the type of seizure activity. About one-third of epilepsy patients do not respond to anti-seizure medications. If epilepsy surgery is a worthwhile option for that type of patient, additional testing is important and includes one or more of the following tests:

- Video EEG monitoring
- Magnetoencephalography (MEG)
- Epilepsy protocol magnetic resonance imaging (MRI)
- Magnetic resonance spectroscopy
- Positron emission tomography (PET) scan
- Single photon emission computed tomography (SPECT) scan
- Neuropsychological testing
- Wada test
- Psychological support

**For more information about Atlantic Neuroscience Institute's Epilepsy Center at Overlook Medical Center, phone (908) 522-4990.**

A man in a dark suit and tie is sitting on a white table next to a large, white, cylindrical medical machine. The machine has the logo 'ELEKTA TRIUX' and 'ELEKTA Neurologie' on it. The man is smiling and looking towards the camera. The machine is a magnetoencephalography (MEG) system. The background is a plain, light-colored wall.

“With our outstanding team of epilepsy physicians, surgeons, nurses and technicians, and our ongoing technology enhancements, Overlook continues to pioneer the medical management of epilepsy and other neurologic disorders.”

— Jeffrey M. Politsky, M.D.

*Located on the lower level of the MAC II building, the magnetoencephalography (MEG) system is operated in a shielded room that minimizes interference from external magnetic disturbances, including the earth’s magnetic field and low frequency magnetic fields produced by moving magnetic objects such as elevators, cars, and trains.*

# Honor Roll of Donors

## Clinical Leadership in a Healing Culture



*Betsy and Toby Wesson with Dave and Kitty Hartman*



*Raul and Jackie Esquivel*

A tribute to the philanthropy of individuals, corporations, organizations and foundations who contributed \$500 or more to the Overlook Foundation from July 1, 2010 through December 31, 2011. The generosity of our donors has enabled Overlook to evolve into a nationally respected regional medical center, providing advanced care close to home. We gratefully acknowledge this community-wide support as we continue to offer both clinical excellence and compassionate care for our patients and their families.

## Humanitarian

Gifts of \$500,000 - \$999,999

Eric Grubman and Betsy Compton

## Founder

Gifts of \$100,000 - \$499,999

Meri and Sol Barer  
Mr. and Mrs. Robert J. Bauer  
Nicholas J. and Anna K. Bouras Foundation  
David R. and Margaret C. Clare  
Mrs. Walter P. Fedor  
The Donald R. Gant Fund  
Dr. and Mrs. Gerald J. Glasser  
Carol and Baxter Graham  
Kitty and Dave Hartman  
Cynn timer and Peter Kellogg  
Gale Metzger  
Mr. and Mrs. David P. O'Connor  
James and Lois Pinkin  
Mr. John Edwin Reeves Jr.  
Miss Katherine L. Rummier  
Mr. and Mrs. Donald C. Weeden  
Sandra and Art Williams

## Benefactor

Gifts of \$50,000 - \$99,999

Anne H. Bumsted  
Mary and Hugh D'Andrade  
James H. and Jean T. Davies  
Mitzi and Warren Eisenberg  
Raul and Jacqueline Esquivel  
Dianne and George Fotiades  
Mr. and Mrs. Robert J. Hugin  
Amy C. Liss  
Mr. and Mrs. Douglas Mack  
The New Jersey Fund of CFNJ  
Mr. and Mrs. Robert C. Rooke  
Angela and Jeff Schroeder  
Michael and Jill Tanenbaum  
Ms. Kate S. Tomlinson  
Toby and Betsy Wesson



*Art and Sandra Williams*



*Alan Lieber, Josh Weinreich and Betsy Compton*



*Anne Babineau, Meri Barer and Ann Oliva*



*Jim Pinkin, Gerry Glasser and Tim Erday*

# Honor Roll of Donors

## Centennial Society Gifts of \$25,000 - \$49,999

*Vince and Priscilla Ursino, Mary and Jack Doyle,  
and Alie and Dr. Paul Starker*



*Jack Mann, Marianne Devlin, Ann Oliva and Mary Bushnell*



*Daniel and Melissa Tassé with Laura Atwell*

Anonymous (1)  
 Mary and Dave Bushnell  
 Diane J. Cesarz  
 Ms. Jessalyn Chang  
 Al and Martha Driver  
 Audrey and Terrence Farley  
 Robert and Linda Flanagan  
 Michael and Joan Gambro  
 Cassandra Hardman  
 Dr. and Mrs. Robert Hariri  
 James and Janet Hislop  
 Barbara and Warren Kimber  
 Mr. and Mrs. A. Michael Lipper  
 Ruth and Peter Metz Family Foundation  
 Mrs. Ward H. Nessen  
 James R. Prisco Sr.  
 Dr. and Mrs. Joel Roth  
 Ava and Steven Schlesinger  
 Melissa and Daniel Tassé  
 Vincent and Priscilla Ursino Sr.  
 Dr. John and Joanne Vigorita  
 Donna and Jack Walcott  
 Mr. and Mrs. Joshua A. Weinreich  
 Pat and Carol Welsh  
 Dr. and Mrs. Edward Zampella



*Joanne and Dr. John Vigorita*



*Jack and Donna Walcott*

Lawrence Society Gifts of \$10,000 - \$24,999



*Paul and Anne Babineau with Tracy and Nick McKee*



*Dr. Jim and Kelly Gardner, Sarah and Dr. Marc Mandel, and Drs. Cathy and Cliff Sales*



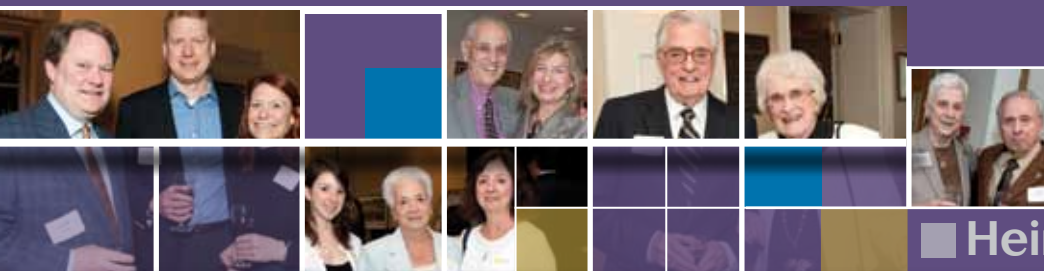
*Frank Bolden with Mary and Bart Sheehan*

Anne and Paul Babineau  
 Mr. and Mrs. Vernon B. Baker  
 Dr. and Mrs. Jon A. Bartlett  
 Mr. Joseph and Dr. Ann Berkery  
 Frank and Penny Bolden  
 Mr. and Mrs. John W. Cooper, Esq.  
 James J. Cramer  
 Shannon and Robert Cross  
 D'Andrade Family Fund of CFNJ  
 Vick and Millie Dankis  
 Mr. and Mrs. Donald F. DeMuth  
 Mrs. Jeanne B. Dillon  
 Mr. and Mrs. Warren Disch  
 Dr. and Mrs. Craig A. Dise  
 Mr. and Mrs. John N. Doyle  
 Claude E. Fusco Jr.

Dr. and Mrs. James N. Gardner  
 Mrs. Carroll V. Gianni  
 Mrs. James L. Gilfillan  
 Mr. and Mrs. Thomas G. Greig III  
 Dr. and Mrs. Walter L. Groff  
 Glenn and Carol Head  
 Mr. James F. Hull  
 Mr. and Mrs. Salvatore Iannuzzi ^  
 Gail and James Kellogg Family Fund  
 of CFNJ  
 Tom and Liz Kelsey  
 Ms. Anne R. Kreuder  
 Mr. and Mrs. Charles R. Lee ^  
 Liam's Room, Inc.  
 Mr. Laurence E. Lindars  
 Mr. and Mrs. Robert Litterman

Mr. and Mrs. Richard B. Loynd  
 Norman and Kristina Luka  
 Dr. and Mrs. Jory G. Magidson  
 Mr. and Mrs. Jack S. Mann  
 The Jack & Meryl Mann Charitable  
 Fund of CFNJ  
 Nick and Carol Mazzocchi  
 Mr. and Mrs. Jay McGraw  
 John and Karin McTigue  
 Jennifer and Lowell Millar  
 Harold and Donna Morrison  
 Cecile and Ed Mosberg  
 Mr. and Mrs. Henry G. Parker III  
 Mr. and Mrs. Daniel A. Pugliese  
 Linda and Leonard Reed  
 Dr. and Mrs. R. Gregory Sachs

Drs. Cathy and Clifford Sales  
 Mr. and Mrs. Brenton Saunders  
 Mr. and Mrs. Howard B. Schiller  
 Louis E. Schwartz, M.D.  
 Mr. and Mrs. Bartholomew Sheehan Jr.  
 Janet and Rick Sherlund  
 Dr. and Mrs. Gregory Shifrin  
 Walter and Judy Shipley  
 Douglas and Tracey Sieg  
 Dr. Fatimah A. Tahlil and  
 Mr. John Reilly  
 Tomlinson Private Foundation  
 Kevin and Delia Willsey  
 Mrs. Douglas C. Yearley



## Heinlein Society Gifts of \$5,000 - \$9,999

Ms. Barbara Z. Alleyne  
 Patrick J. and Monica M. Bergin  
 Mr. and Mrs. Thomas W. Berry  
 Mr. and Mrs. Luke M. Beshar  
 Bob and Fran Brandell  
 Judith Brenner  
 Jeffrey and Joanne Brensilver  
 Mary Burke  
 Dr. and Mrs. Donald E. Casey Jr.  
 Dr. and Mrs. Federico Cerrone  
 Sarah and Steven Christensen  
 Mr. and Mrs. Christopher Coates  
 Marsha and Jeff Cohen  
 Mr. and Mrs. James J. Cusack  
 Dr. David D. Daniels  
 The Delisi Family  
 Mrs. Deborah Dente  
 Mr. James T. Dettre  
 Alice and Bob Dillon  
 Timothy and Jennifer Erday  
 Patricia and Kevin Fitzpatrick  
 Bob and Cindy Gallagher  
 Mr. and Mrs. Charles M. Gianni Sr.  
 Mr. and Mrs. Lori Dahl and Benjamin Goldin  
 Dr. and Mrs. Albert J. Gosen  
 Andrew and Christine Gottesman  
 Ajay and Danielle Goyal

Dr. and Mrs. Frank E. Gump  
 Michael and Pamela Gumpert  
 Robert and Lois Hageman  
 Lee M. Hale  
 Toula and John Halperin  
 Mr. and Mrs. Walter P. Havenstein Sr. ^  
 Steve and Lisa Kennedy  
 Dr. and Mrs. Roger M. Kurlan  
 Mr. and Mrs. David A. Lackland  
 Theresa and David Langer  
 Charles and Elizabeth LaRosa  
 Alan Lieber and Alice Heffner  
 The Ralph A. Loveys Family Charitable  
 Foundation  
 Margaret and Frank MacPherson  
 Ms. Mary Maksoud  
 Dr. Richard W. Maus and Janet Maus  
 Mr. and Mrs. Edward B. McGeough  
 Cheryl and Frank McKenna Jr.  
 Mrs. William H. McLean  
 Dr. and Mrs. Daniel J. Moriarty  
 The Newhouse Family  
 Mr. and Mrs. James M. O'Brien  
 Winifred and Brendan O'Connell  
 Anne and Ed Olesky  
 Sandy and John Olson  
 Helene and Martin Oppenheimer

Mr. and Mrs. Terence M. O'Toole  
 Leigh and Randy Porges  
 Mr. and Mrs. Kevin A. Quinn  
 Sara M. and William L. Rand  
 The Michael C. Romano Family  
 Mr. John F. Rosellini Jr.  
 Madeline and Richard Salzman  
 Dr. and Mrs. Simon J. Samaha  
 Daniel and Jennifer Schildge  
 Eric and Therese Shick  
 Sally Simons  
 Dr. and Mrs. Frank A. Sinatra  
 Mr. and Mrs. Alok Singh  
 Mr. and Mrs. J. Albert Smith III  
 Mary Louise Sprague  
 Dr. and Mrs. Steven J. Stanzone  
 Dr. and Mrs. Paul Starker  
 Stephen and Linda Stone  
 Mr. and Mrs. John G. Sully  
 Dr. and Mrs. Robert Sussman  
 Mr. and Mrs. Joseph Tato  
 Mr. and Mrs. Denis M. Turko  
 Mr. and Mrs. Michael J. Urfirer ^  
 Mr. and Mrs. Neil Vanderbilt  
 Robin and Leigh Walters  
 Kathleen and Charles Wirry  
 Mr. and Mrs. Albert Zesiger ^



*Scott Magrane with Luke and Annette Beshar*



*Alan Lieber, David Dietze, Steve Stone and Shannon Cross*



*Drs. Shalini and Rakesh Bansil with Cathy and Dr. Roger Kurlan*



# Honor Roll of Donors

## Chairman's Circle Gifts of \$2,500 - \$4,999

Anonymous (2)  
Kenneth Aidekman Family Foundation  
David and Barbara Baldwin  
Fred Bartenstein Jr.  
Mr. and Mrs. James A. Basso  
Mr. and Mrs. John P. Bent Jr.  
Clelia Biamonti and Adam Psichos  
Peter Bolo, M.D.  
Ann and Stan Borowiec  
Freda Brown  
Cynthia and Tom Burke  
In Memory of George and Madeline Burry  
Teresa C. Byrne  
Gina M. Carro  
Mr. and Mrs. Sal Caruana  
Drs. Shilpa and Matthew Clott  
James and Ellen Coyle  
Mr. and Mrs. Robert J. Daeschler  
Kathie and Peter Daley  
Luciana S. Daniels, D.D.S.  
Philip and Meril Davies  
Nancy S. Desnoyers  
H. William Diefendorf  
Ms. Claire E. Toth and Mr. David G. Dietze  
Chris and Lisa Donoghue  
Dr. and Mrs. Charles E. Dooley Jr.  
Dr. Rosalind and Mr. S. David Dorlen  
Jane D. Engel  
Mrs. Roslyn Feuer  
Mr. and Mrs. Paul J. Finn  
Barry and Jane Freeman  
Kathleen Gibbs  
Mrs. James Gillin Jr.  
Mr. Anthony Gioia  
Dr. and Mrs. John J. Gregory Sr.  
Mr. and Mrs. Thomas J. Healey  
Mr. Michael Henry  
Mark and Amy Holtz  
Mr. and Mrs. John G. Hover  
Marilyn and Walter Jeffrey  
Mr. and Mrs. Dave Jorn  
Mr. and Mrs. Daniel D. Kalem  
Dr. Susan T. Kaye  
Henry and Jane Kelly

Mr. Herbert W. Kirby  
Mr. and Mrs. Stephen W. Kowitz  
Mrs. Nancy Laird  
Mr. Lawrence Leibowitz  
Mr. and Mrs. Kevin Lenahan  
Dr. and Mrs. Marc S. Mandel  
The Martin and Carpenter Families  
Mr. and Mrs. Michael Mastroianni  
Tim and Lorie McDonald  
Nick and Tracy McKee  
Raymond Monahan  
Richard and Sandra Tillyer  
Mr. and Mrs. William S. Neate  
Mr. and Mrs. Robert J. Newhouse Jr.  
Ann M. Oliva  
Barbara and Frank Pados  
Mr. Roger B. Parsons  
Arthur Patchett  
The Jules Podell Foundation  
Mr. and Mrs. John N. Poole  
Dr. Kathleen G. Reichard  
Dick and Linda Richardson  
Michele and Larry Rickles  
Mr. and Mrs. Steven F. Ritardi  
Robert J. Daeschler Fund of CFNJ  
Frances K. Robinson  
Mrs. Mary Lou Roux  
Jane and David Rubin  
Dr. David P. Saur and Ms. Gerri McCann  
Ms. Luisa Scalvini  
Lisbeth Searing  
Mr. and Mrs. Daniel Solondz  
Barbara and Eugene Speni  
Ms. Susan E. Stacey ^  
Dick and Barbara Stockton  
Helen and Stanley Stroz  
Mrs. John C. Swett  
Mike and Kathy Tatlow  
Germaine and Richard Trabert  
Mr. and Mrs. Arthur F. Weinbach  
Allan and Helaine Weisberg  
David and Emily Wexler  
Mr. and Mrs. Ido Zairi



*Betsy Phillips and Clelia Biamonti*



*Phil Davies, Larry Rickles and Dick Trabert*



*Ann Oliva with Dr. Pete Saur and Gerri McCann*

# Honor Roll of Donors

■ Fellow Gifts of \$1,000 - \$2,499



Anonymous (17)  
 Ms. Laurie Newitz and  
 Mr. Kenneth E. Adelsberg ^  
 Dr. Rozana R. Alam  
 Dr. and Mrs. Alfonso  
 Dr. and Mrs. Lloyd H. Alterman  
 Dr. and Mrs. Chris Amalfitano  
 Arlene and Byron Arison Family Foundation  
 Mr. and Mrs. Peter A. Atkins ^  
 Laura and Jim Atwell  
 Mr. and Mrs. A. Jude Avelino  
 Jean B. Ball  
 Dr. Shalini Bansil  
 Frances and John Barker  
 Mr. and Mrs. Randolph H. Barker  
 Jonathan Baskin  
 Ms. Constance C. Bassett  
 Dr. Gastone Bello  
 Dr. and Mrs. Paul Belsky ^  
 Lynne and Michael Bernstein  
 Mr. Steve A. Bernstein  
 Mr. and Mrs. John G. Berylson ^  
 Brian and Andrea Beyerl  
 Dr. and Mrs. Michael E. Bilenker  
 Ms. Joan E. Blagg and Mr. George S. Hiltz  
 Mrs. Anna Bonaccorso

Abby and John Boozan  
 Mr. and Mrs. Lawrence Botts  
 The Bourri Family  
 Frank G. Boye III  
 George and Francele Boyer  
 Mr. and Mrs. Richard Braun  
 Mr. and Mrs. Robert S. Brewster  
 Mr. and Mrs. William Brindise  
 Dr. Fred and Shari Bromberg  
 Mr. and Mrs. E. Freeman Bunn  
 Jennifer and Reagan Burkholder  
 Joyce Bushey  
 Ms. Dorothy Calvani  
 Ms. Mary Lou Carter  
 Mrs. Palma Celiano  
 Mr. and Mrs. Nicholas D. Chabraja ^  
 Jennifer A. Chalsty  
 Mr. and Mrs. Bruce Chambeau  
 Mr. and Mrs. James Champy ^  
 Dr. and Mrs. Bertram Chinn  
 Carol and Ed Cimilluca  
 Charles P. Ciolino, M.D.  
 Rosemarie Collingwood-Cole and  
 Kenneth Cole  
 Marie and Tony Combias  
 Dr. John Connor

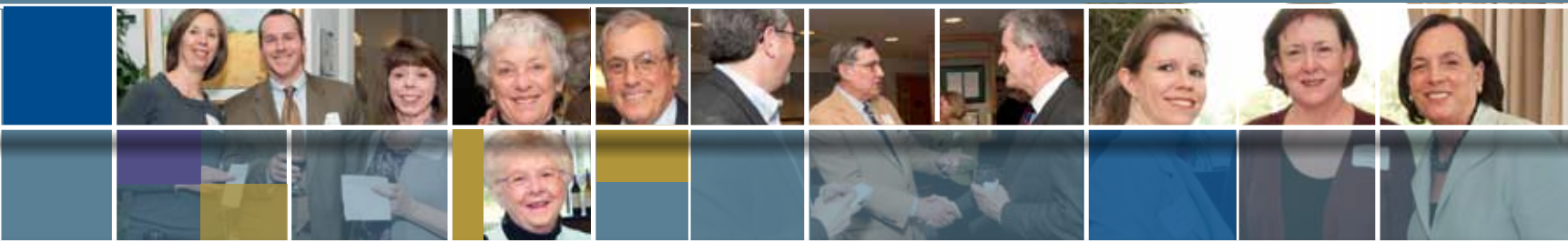
Ms. Laurine G. Connors  
 Consultants in Infectious Diseases  
 Dr. and Mrs. Jerome I. Cook  
 Dr. Ann C. Cotter  
 Kevin M. and Charlotte "Joy" Cox  
 Bob and Chris Cox  
 Mr. and Mrs. Robert Cronheim  
 The Honorable Barbara A. Curran  
 Annamaria (Mary) Damiano  
 Ian and Michelle Davies  
 Mr. and Mrs. Terence N. Deeks  
 Mr. Michael Degloma  
 Ruby deStevens  
 Mrs. Frank A. Digaetano  
 Dr. Julia M. DiGioia and  
 Dr. Stephen C. Hall  
 Dr. and Mrs. Vincent Donnabella  
 Mrs. Shari L. Dorfman  
 Dr. and Mrs. Steven Dorsky  
 Frances Drigun  
 Mr. and Mrs. Alan Dubov  
 Lucy Duffy  
 Mr. and Mrs. Edward Dunlop  
 Christel Dynes  
 Mr. and Mrs. Robert Early ^  
 Sarah and Jim Engle



*Dr. John and Alice Gregory with Marlene and Gerry Glasser*



*Ken Cole, Jack Cooper, Dick Nightingale and Dave Hartman*



Mrs. Woodruff J. English  
 Mr. and Mrs. Mark A. Enman  
 Ms. Mary Esquivel  
 Marc and Kristin Faecher  
 Mr. and Mrs. James A. Ferency ^  
 Ms. Barbara Ferguson  
 Mrs. April Fey  
 Gina Fischbein  
 Mrs. Stephen J. Fischl  
 Mr. and Mrs. Frank L. Florian  
 Ms. Nadia Fontaine and Mr. Hugues Rivard  
 Mrs. William E. Ford  
 Dr. and Mrs. John Franzese  
 Garry Frisoli, M.D.  
 Drs. Robert and Susan Fuhrman  
 Mr. Samuel Furci  
 Mr. David H. Ganz  
 Dr. and Mrs. Allan L. Gardner  
 Dr. and Mrs. John T. Gianis Jr.  
 Ms. Louise E. Gili  
 Peter F. Goggi and Family  
 Dr. Jonathan E. Goldstein and Ms. Carla D. Lilien ^  
 Dr. and Mrs. Paul E. Gray ^  
 Lois and Richard Griggs  
 Mr. and Mrs. Sanford S. Grossman ^  
 Dr. and Mrs. Michael L. Gruber

Mr. and Mrs. Michael A. Guadagno  
 Marilyn E. Haggerty  
 Dr. and Mrs. Thomas B. Hakes  
 Mr. and Mrs. Robert H. Halstead  
 Mr. and Mrs. Cary R. Hardy  
 Mr. and Mrs. Pdraig Harris  
 Mr. Robert C. Harris Jr. ^  
 Mr. Philip H. Haselton  
 Thomas S. and Sally S. Henderson Foundation  
 Mr. and Mrs. D. F. Herbst  
 Kristin and Paul Herendeen  
 David and Claudia Hesk  
 Jay and Gertrude Heyman  
 Ms. Dorothea H. Hoffman  
 Mr. and Mrs. Warren E. Hoffman  
 Mr. and Mrs. L. Donald Horne  
 Kristen Houghton  
 Mr. and Mrs. John H. Huneke  
 Lisa and Timothy Hurckes  
 Dr. Peter Hyans  
 Drs. Michael S. and Lori B. Ingber  
 Thomas and Kathryn Inglesby  
 Chris and Ingrid Innes  
 Mr. and Mrs. Leon B. Jemmott  
 Ingrid Johnson Hayward  
 Mrs. Glenn W. Johnson Jr.

Bob and Barbara Jones  
 Jay and Linda Kaplan  
 Ms. Sharon Karmazin  
 Mr. and Mrs. Steven W. Katz ^  
 Mr. and Mrs. Ilan Kaufthlal ^  
 Dr. Alissa E. Kaye  
 Drs. Gary and Alissa Kaye  
 Mr. Daniel L. Keating  
 Mr. and Mrs. Garnett L. Keith  
 Susan and Henry Keller  
 Mr. and Mrs. Brian J. Kelly Sr.  
 Sharon Kelly  
 Ms. Kathleen Kennedy  
 Mrs. Karen J. Kessler-Horowitz and  
 Mr. Robert Horowitz  
 Mrs. Samuel M. Kinney Jr.  
 Dr. and Mrs. Thomas H. Kloos  
 Ruth and Chris Knoeller  
 Ms. Marylu Korkuch  
 Dr. and Mrs. Michael G. Kral  
 Neil Kramer, MD  
 Mr. and Mrs. Carl J. Kreidler Jr.  
 Mr. and Mrs. Jeffrey Kronthal  
 General and Mrs. Charles C. Krulak (USMC Ret.) ^  
 Kathy and George M. Kunath  
 Dr. and Mrs. Robert E. LaBlanc ^



*Mark Holtz and Dr. Bonni Guerin*



*Kay and Dr. Tom Inglesby with Ann Oliva*



*Alan Lieber and Alice Heffner, Steve Stone, and Lynn and Scott Magrane*



Marcelo Lancman, M.D.  
 Dr. Melvin and Marion Landew  
 Mr. and Mrs. Won Tack Lee  
 Mr. and Mrs. Stanley Leezenbaum  
 Ms. Rose A. Leggiero  
 Ellen and Eric LeGoff  
 Dr. Joel and Mrs. Claire Lerner  
 Mr. and Mrs. Peter Liebman  
 Mr. and Mrs. Martin Lipton ^  
 Mr. and Mrs. Steven M. Loeb ^  
 Dr. and Mrs. Jerrold S. Lozner  
 Mr. and Mrs. Owen T. Lynch  
 Mrs. Annette L. Mackie  
 Linda and Glenn Maggio  
 Lynn and Scott Magrane  
 Drs. David and Isabel Mahalick  
 Alice E. Maluso  
 Mrs. Joseph A. Mangin  
 Mr. and Mrs. Robin J. Marks  
 Mr. and Mrs. Robert C. Martin  
 Drs. Heidi and William Matuozzi  
 Christina Maund  
 Dr. Catherine Mazzola and Family  
 Dr. and Mrs. Timothy P. McCabe  
 Mr. and Mrs. Sean P. McDonald  
 Patsy and Danny L. McDuffie  
 Mr. and Mrs. W. Scott McGraw  
 Mr. and Mrs. Robert B. McKeon ^  
 Sandra and James McTernan

Mr. and Mrs. William J. Michaelcheck ^  
 Mrs. Herman D. Michels  
 Mr. and Mrs. Robert Millard ^  
 Mr. and Mrs. Stephen C. Mills  
 Mr. and Mrs. Edgar Mokuvos  
 Christy and Neil Morganstein, M.D.  
 Mr. John R. Mulcahy  
 Bob and Terry Mulcahy  
 Mrs. Theodore R. Murnick  
 Lydia Nadeau  
 Dr. Lawrence J. Nastro  
 Mr. and Mrs. Philip M. Neches  
 Mr. and Mrs. William E. Newell Jr.  
 Mr. and Mrs. Mark S. Newman ^  
 Mrs. William B. Nicholson  
 Mr. and Mrs. Robert Noelke  
 Joe and Lynne Oakes  
 Dr. and Mrs. William H. O'Brien  
 Mr. and Mrs. Robert L. O'Connor  
 Mr. and Mrs. Philip A. Odeen ^  
 Robert A. Panza, M.D.  
 Joyce and Mark Passen  
 Mr. and Mrs. Robert L. Peake  
 Richard and Kayla Pechter  
 Perlowitz Family  
 In the memory of Richard J. Petroski  
 Pfaltz Family Fund of the  
 Community Foundation  
 Dr. and Mrs. Pascal A. Pironti

Anne and Jonathan Plaut  
 Dr. David and Mari Plotkin  
 Dr. and Mrs. Lawrence Plotkin  
 Mr. and Mrs. Steve Pollard  
 Mr. and Mrs. Jay R. Post  
 Ms. Doriann Prasek  
 Mr. and Mrs. Douglas A. Present  
 Thomas and Elizabeth Pryma  
 Mr. and Mrs. James P. Quinn  
 William A. and Camilla Kuhn Quinn  
 Dr. Gitendra Rajiyah  
 Mr. and Mrs. Stanley Reese ^  
 Ms. Patricia Regenberg  
 Mrs. Robert C. Reiss  
 Dr. Nina and Mr. Carl Reynolds  
 Mr. and Mrs. Michael Rhodes  
 Nancy G. Rice  
 Andrea and Victor Richel  
 Mrs. William C. Ridgway Jr.  
 Mr. and Mrs. Henry P. Riordan  
 Alan Robertson  
 Mr. and Mrs. David A. Rocker  
 Dr. and Mrs. Michael and Stacey Rokhsar  
 Cassandra L. Romas  
 Mr. and Mrs. Thomas W. Rooke  
 Steve and Wendy Rosenberg  
 Dr. Gerald Rosenfeld and Ms. Judith Zarin ^  
 Elliot D. Rosenstein, MD  
 Mr. and Mrs. E. John Rosenwald Jr. ^



*Alice and Bob Dillon with Sue Thomas*



*Kassandra Romas and Connie Williams*



*Joyce Farrell, Lenore Ford and Julie Planck*

# Honor Roll of Donors

## ■ Fellow Gifts of \$1,000 - \$2,499

Jack and Joslin Ruffe  
 Dr. Patricia Ruggeri-Weigel and  
 Dr. Peter J. Weigel  
 Rich and Gwyneth Sample  
 Mr. Michael G. Samuelson  
 Peter and Joanne Santoriello  
 Ms. Jennifer Scatcherd  
 Scott R. Schmedel  
 Lois and Alan Schneider  
 Dr. and Mrs. David Schreck  
 Mr. and Mrs. Scott A. Seigal  
 Mr. and Mrs. Louis Serio ^  
 Dr. and Mrs. Farrokh Shafaie  
 Mr. and Mrs. Howard Shallcross  
 In Memory of Donald P. Sharkey  
 Mr. and Mrs. Jon Shearin  
 Mr. and Mrs. William J. Shepherd  
 Dr. and Mrs. Steven J. Sheris  
 Sharon and Bob Slama  
 Linda and Watson Smith  
 Dr. and Mrs. Peter J. Snieckus  
 Ambassador and Mrs. Clifford M. Sobel ^  
 Mr. and Mrs. Harold Sobel  
 Mr. and Mrs. Jonathan Sobel ^  
 Maureen and Robert Spalteholz  
 Dr. and Mrs. Richard Stabile  
 Elliott M. Stein, M.D.  
 Ms. Nancy Stober McCarthy and  
 Mr. Michael McCarthy

Mr. Frederick Stober  
 Frank Bush Stone  
 Dr. and Mrs. Kenneth J. Storch  
 Bill and Kathleen Strott  
 Mr. and Mrs. Peter Sudler ^  
 Dr. and Mrs. Michael Suhl  
 MaryPat Sullivan  
 Mrs. Edward L. Swan  
 Dr. John F. Tabachnick and  
 Ms. Sharon M. Joyce  
 Mr. and Mrs. Thayer Talcott Jr.  
 Jack S. Tamagni  
 Charlotte and Morris Tanenbaum  
 Dr. Nana E. Tchabo  
 Susan M. Thomas  
 Mr. and Mrs. R. Donald Thomson  
 Jim and Karen Tobin  
 Dr. Lisa Toffey and Mr. James Toffey  
 Mrs. Harry L. Tower Jr.  
 Ms. Frances F. Townsend ^  
 Mr. and Mrs. Frank Traina  
 Neale and Harriett Trangucci  
 Dr. and Mrs. Dennis Turner  
 Mr. and Mrs. Richard Ughetta  
 Mr. and Mrs. David S. Untracht ^  
 Ms. Annette M. Velotto and  
 Mr. Michael A. Kysela  
 Mr. and Mrs. Robert J. Venezia  
 Charles G. and Gail V. Walker

Mrs. Mary L. Walsh  
 Rosemary Walsh  
 Althea Weeks  
 Mr. and Mrs. David L. Weeks  
 Joshua Weidner  
 Mr. Herbert O. Weidner  
 Rachel M. Weinberger and  
 Edward G. McGann  
 Mr. and Mrs. Stanley A. Weiss ^  
 Mr. and Mrs. James O. Welch Jr.  
 Mr. and Mrs. Norbert W. Weldon  
 Mr. and Mrs. Josh Weston ^  
 Daniel P. Whelan  
 Dr. Mark D. Widmann and  
 Ms. Kim S. Hirsh  
 Connie Frank Williams  
 Mr. and Mrs. John A. Windolf  
 Mr. and Mrs. Henry F. Wood Jr.  
 Dr. and Mrs. David A. Worth  
 Mr. and Mrs. Joseph R. Wright  
 Mr. and Mrs. Tim Yates ^  
 Dr. Diane C. Young  
 Mr. and Mrs. Louis G. Zachary Jr.  
 Louis and Lillie Zachary  
 Mr. and Mrs. John K. Ziegler  
 Mr. and Mrs. Paul Zoidis



*Lorie McDonald with Kim and Andreas Stuermann*



*Drs. Robert Sussman and Jeff Brensilver*



*Laila Almeida and Dr. Peter Bolo with Ann Oliva*

# Honor Roll of Donors

## Patron Gifts of \$500 - \$999



*Bob and Elsa Russell with Peggy and Dr. David Schreck*

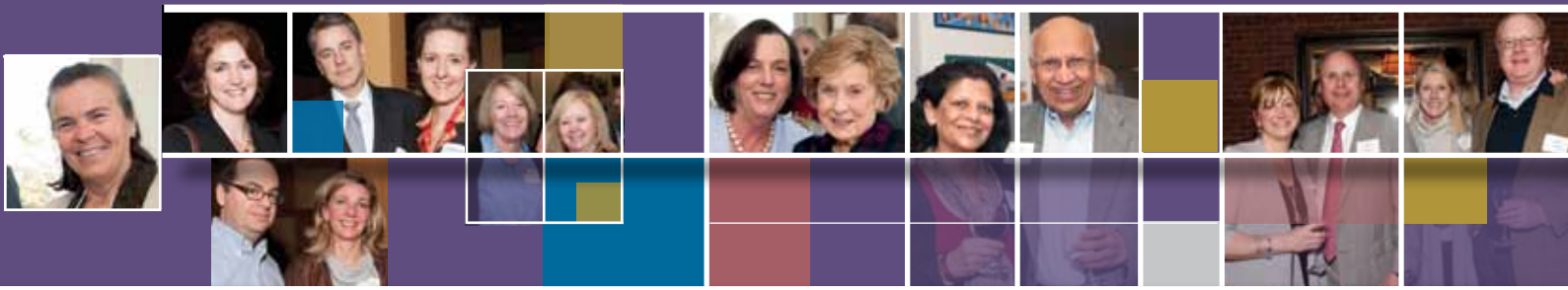


*New Jersey State Senator Thomas Kean Jr., former Governor Thomas Kean, and Dr. Sol Barer*



*Beth Searing, Alan Lieber and Ellen Lambert*

Anonymous (6)  
 Mr. and Mrs. Richard A. Aborn  
 Ms. Cathy M. Abrams  
 Dr. Abu S. Alam  
 Reverend and Mrs. Ronald Allen  
 Beverly and Alan Anderson  
 Mr. John Andrews  
 Mr. W. Graham Arader III ^  
 Mr. and Mrs. Gregory K. Arenson ^  
 Ms. Andrea Badalamenti  
 Mr. and Mrs. Theodore D. Baldwin  
 Rob and Bridget Barber  
 Tim and Debbie Barnes  
 Mr. and Mrs. Julio Barreiro  
 The Honorable and Mrs. C. Louis Bassano  
 Mr. and Mrs. William J. Baumgartner  
 Mr. Michael J. Bayer ^  
 Mr. and Mrs. Joseph A. Belfatto  
 Ms. Anne Bennett  
 Mrs. Theresa Bernaz  
 Jeffrey and Bernadette Bonner  
 Mr. and Mrs. Thomas J. Brown  
 Ms. Ingrid Steffensen and Mr. Jeffrey B. Bruce  
 Mr. and Mrs. Michael A. Burniston  
 Dr. and Mrs. Stephen T. Busby  
 Mr. and Mrs. Brian W. Bussey  
 Auvril Campbell  
 Mr. and Mrs. Richard J. Caplin ^  
 Dr. and Mrs. Dean L. Carlson  
 Mrs. Judith A. Chicka and Mr. Ezra E. Carr  
 Mr. and Mrs. Robert J. Casale ^  
 Mr. and Mrs. Mark B. Chasin ^  
 Ms. Nanette Cirelli  
 Mr. and Mrs. Kevin Clancy  
 Mr. Joshua M. Clough  
 Mr. and Mrs. Henry A. Collins  
 Dan Connolly and Nancy Hurley  
 Anthony and Susan Cook  
 Ms. Alyse Cooper  
 Mr. and Mrs. Leon Cooperman ^  
 Mr. and Mrs. Michael F. Crewes  
 Mr. and Mrs. Paul E. Cugno  
 Ms. Jill Dailey  
 The Honorable and Mrs. Richard J. Danzig ^  
 Mrs. Richard H. Deatly  
 Nancy and Kevin DeFreest  
 Donna Delicio  
 Mrs. Lisa T. Deslauriers ^  
 Dr. Trevor DeSouza and Dr. Elsie Estrada  
 Rosina B. Dixon, M.D.  
 Miss Mary H. Donelik  
 Mr. and Mrs. Frank L. Douglas  
 Mrs. Edward L. Dreyer  
 Ms. Gina M. Duvalsaint  
 Antonio Elazegui and Family  
 Mr. and Mrs. Glenn D. Engel  
 Joyce and Robert Farrell  
 Mr. and Mrs. Andrew B. Federbusch  
 Mr. and Mrs. Andrew I. Fillat ^  
 Mr. and Mrs. Anthony T. Fiory  
 Ms. Dawn Flanagan and Mr. Timothy Flanagan  
 Drs. Judy and Roger Flax  
 Mr. and Mrs. Anthony J. Formichella  
 Mr. and Mrs. Lawrence G. Foster  
 Dr. Gregory J. Gallina  
 Dr. and Mrs. Cyril E. Geacintov  
 Admiral and Mrs. Edmund P. Giambastiani Jr.  
 (US Navy, Ret.) ^  
 Dr. and Mrs. John T. Gianis  
 Ms. Lauren A. Godwin  
 Frances and Daniel P. Gold  
 Mr. and Mrs. Anthony Grillo  
 Mr. and Mrs. John A. Grillo  
 Dr. and Mrs. Gabriel G. Gruber  
 Mr. and Mrs. Thomas S. Hall  
 Mr. and Mrs. James C. Harris  
 Mr. Richard Heitner  
 Mrs. Charles R. Heller  
 Mr. and Mrs. Weston M. Hicks  
 Mrs. Sophie M. Hirtler  
 Ed and Pat Hobbie  
 Mr. and Mrs. John J. Hodges



Mr. and Mrs. Richard Horn  
 Nancy and Lee Horner  
 Mr. and Mrs. Mel M. Immergut ^  
 Mr. and Mrs. Laurence F. Ioffredo  
 Mr. Toby Jackson  
 Arlene D. Jonach  
 Andrea Katz, M.D.  
 Mr. and Mrs. David T. Kearns ^  
 Mr. and Mrs. C. Burton Kellogg II  
 Mr. and Mrs. David M. Kelly  
 Amber M. Khan, M.D.  
 Michael Kilik Memory Fund of CFNJ  
 Ms. Laura Mellor and  
 Mr. Michael P. Kim ^  
 Dr. and Mrs. Shawn R. Klein ^  
 Ms. Laura E. Korfmann  
 Ms. Laura I. Kramer  
 Dr. and Mrs. Marvin F. Kraushar  
 Ms. Peggy J. Kreider  
 Mr. and Mrs. Jules Kroll ^  
 Mr. and Mrs. Philip C. Kron  
 Mr. and Mrs. Thomas P. Kurlak  
 Andrew and Kay Lark  
 Mr. and Mrs. Randall W. Larrimore ^  
 Mr. and Mrs. George A. Leach Jr.  
 Mr. and Mrs. Herman Lebersfeld  
 Drs. Rachel R. and Tonel Leib  
 Mr. Andrew J. Levander ^  
 Mr. and Mrs. Gordon A. Lewandowski  
 Mr. and Mrs. Michael J. Linenberg  
 Jennifer Lublin, M.D. and  
 David Rojer, M.D.  
 Mr. and Mrs. Jay A. Lurch ^  
 James P. Lynch, Esq.  
 Lt. Colonels Michael J. and  
 Rose-Ann Lynch (USMC, Ret.) ^  
 Mr. and Ms. Vincent Macaulay Savioli  
 Mr. and Mrs. Ian B. MacCallum Jr.  
 Mr. and Mrs. Thomas J. Maccari  
 Mrs. Ronald F. MacKay  
 Mr. Kemsey J. Mackey

Mrs. Jacqueline M. Marti  
 Michael Vergura and  
 Christine Masterson Vergura  
 Mr. Donald R. Maxwell  
 Mr. and Mrs. David McCallum ^  
 Dr. and Mrs. John McCormick  
 Mr. and Mrs. Gary W. McCready  
 Ms. Rosemarie E. McLaughlin and  
 Mr. George M. Way  
 G. W. McMahon  
 Mr. and Mrs. Joseph J. Melone ^  
 Mr. and Mrs. Philip Melville  
 Mr. and Mrs. Richard L. Metrick ^  
 Dr. Ida A. Miguelino  
 Sandra and Eugene Mollica  
 Tim and Melissa Moriarty  
 Mrs. Edmond Morrison  
 Ms. Harriet J. Murdock  
 Ms. Kathleen Murray  
 Dr. and Mrs. Robert Oberhand  
 Mr. and Mrs. Robert M. Ogden  
 Sheilah O'Halloran  
 Mrs. Maureen K. Onyrcuk  
 Other Fellow First Foundation Fund  
 of CFNJ  
 Michael S. Overa  
 Mr. and Mrs. Vincent Pacilio Jr.  
 Ronald D. Pallant, M.D.  
 Mr. and Mrs. Michael Palmer  
 Linda and Wally Parker  
 Dorothy Perko  
 Mr. and Mrs. Thomas C. Phelan, Esq.  
 Dennis and Merle Poller  
 Mr. and Mrs. Steven J. Pozycki  
 Mr. and Mrs. Francis A. Preite  
 Mr. and Mrs. Michael J. Price ^  
 Ms. Elaine G. Pruzon ^  
 Mr. and Mrs. Lee H. Resnick  
 Dr. and Mrs. Robert A. Restifo  
 Katherine Rhodes  
 Mr. and Mrs. Russell D. Robertson

Ms. Christine Romanowski  
 Mr. Alyn J. Roos  
 Gloria Rose  
 Dr. and Mrs. Robert L. Rosenbaum  
 Mrs. Roberta M. Rosenblatt ^  
 Mr. John R. Rosenski  
 Mr. Seth Rothman  
 Sal and Charlene Ruggiero  
 Dr. John W. Rushman  
 Elsa B. Russell  
 Drs. Gabrielle and Amir Salomon  
 Mr. and Mrs. Mikael Salovaara  
 August G. Salvatore, M.D., Ph.D.  
 Mr. William S. Saslow ^  
 Mr. and Mrs. Barton L. Satsky ^  
 Mr. and Mrs. Austin Sayre  
 Mr. and Mrs. Nelson Schaeen Jr.  
 Dr. and Mrs. Howard I. Scher ^  
 Mr. and Mrs. Richard Schmeelk ^  
 Diane M. Schneider, R.N.  
 Mr. and Mrs. Peter Schoenfeld ^  
 Daniel R. Schwartz M.D.  
 Mr. Henryk Schwarz  
 Dr. and Mrs. Barry R. Seidman  
 Dr. Ryan Serio ^  
 Willard and Eunhee Shih  
 Mr. and Mrs. George F. Shuttleworth  
 Ms. Jo-Ann Simon  
 Mr. and Ms. Orval J. Sizemore  
 Kiron K. Skinner, Ph.D. ^  
 Mr. and Mrs. Andrew J. Slater  
 Carol J. Smith RNC Nurse Manager  
 Ms. Olive Smith  
 Mr. and Mrs. Ronald W. Smith  
 Ms. Sidney Smith  
 Stephen and Cristina Socolof  
 Mr. and Mrs. David M. Solomon ^  
 Ms. Beverly Sonnenberg  
 Ms. Joan E. Spanarkel  
 Mr. and Mrs. Sheldon I. Stein ^  
 Mr. and Mrs. David J. Stone ^

Mr. and Mrs. Brian Sudler ^  
 Mr. Daniel D. Sugarman ^  
 Ms. Shannon E. Sullivan  
 Mr. William T. Sullivan ^  
 Mr. and Mrs. Charles W. Thomas  
 Ms. Shirley M. Thomas  
 Ms. Narshonna J. Townes  
 Twenty Springs Fund #2 of CFNJ ^  
 Sheri and Marc Urowsky  
 Ms. Emanuel J. Meli and  
 Mr. Ronald E. Verblaauw  
 Mr. and Mrs. Kenneth Wang ^  
 Jeffrey and Iris Wasserstein  
 Michael B. Wax, M.D. and  
 Judith E. Weisfuse, M.D.  
 Ms. Lynn E. Webb  
 Mr. and Mrs. Chuck Webster  
 Mr. and Mrs. Allen Weingarten ^  
 Michael and Laura Weinrauch  
 Mr. Robert L. Weitzner and  
 Ms. Lisa M. Goldman  
 Stephen and Regan Wesson  
 Mr. and Mrs. Leonard Wilf  
 Mr. and Mrs. J. Clifton Wilkerson  
 Mr. and Mrs. Alexander S. Williams  
 Mr. and Mrs. John S. Willian  
 Secretary and Mrs. Donald C. Winter ^  
 Professor and Mrs. Nicholas Wolfson ^  
 Mr. Charles Woodard  
 Mr. and Mrs. H. Boyd Woodruff  
 Mr. Jimin Youm  
 Mr. Ronald B. Young  
 Ms. Ilene L. Zelkin  
 Mr. and Mrs. Edward W. Zimmerman  
 Dr. and Mrs. Mark I. Zimmerman  
 Dr. Carol Zimmermann and  
 Mr. John E. Joyce  
 The Zocca Family

*^ Donations made solely to the  
 Andy Bovin Memorial Fund*

# Honor Roll of Donors



Free stroke screenings will be provided to many area residents thanks to a grant from TD Bank, represented by Brigitte Reichter-Hajduk (second from left), vice president and branch manager in Chatham. Accepting the check are Overlook's Joyce Passen, Vince Ursino and Beth Searing.



For the second consecutive year, Nickel Street Salon owner Vincent Marmorato and his staff hosted a holiday cut-a-thon to benefit the Valerie Fund at Overlook. The New Providence-based salon was joined by many of its neighboring businesses in offering a festive day of music, snacks and raffles.

## Gifts of \$200,000+

Overlook Auxiliary

## Gifts of \$100,000 - \$199,999

Anonymous (1)  
The Chubb Corporation  
Merck Company Foundation  
Summit Anesthesia Associates  
Team Health, Inc.

## Gifts of \$50,000 - \$99,999

Atlantic NeuroSurgical Specialists  
The Connell Company  
Fidelity Brokerage Services LLC  
Goldman Sachs Gives  
Johnson & Johnson  
Market Strategies  
Morristown Pathology Associates  
Overlook Medical Center Medical Staff

## Gifts of \$5,000 - \$9,999

Advanced Laparoscopic Surgery Institute, PC  
Cook  
The DavidHenry Agency LLC  
Davies & Associates  
EKR Therapeutics, Inc.  
Genomic Health, Inc.  
Hospira, Inc.  
Island Hospitality Management, Inc.  
McGraw-Hill Companies  
The Medicines Company  
Morgan Stanley  
Myriad Genetics, Inc.  
Nickel Street Salon  
Northeast Regional Epilepsy Group  
Optimum LightPath  
Our 365  
Pfizer  
Policy Studies, Inc.  
sanofi-aventis  
University of the Sciences in Philadelphia  
Verizon  
W. L. Gore & Associates, Inc.

## Gifts of \$10,000 - \$49,999

Active Network  
Allergan USA, Inc.  
Atlantic Ambulance Corporation  
Automatic Switch Company  
Bank of America  
Bausch and Lomb  
Berkery, Noyes & Co.  
Buckl Architects  
Cardinal Health  
Celgene Cellular Therapeutics Division  
Celgene Corporation  
Dempsey, Dempsey and Sheehan  
Disch Construction  
Eckroth Planning Group, Inc.  
Emergency Medical Associates  
Fitzpatrick & Associates, Inc.  
Genentech, Inc.  
Goldman Sachs & Company  
HiTouch Business Services LLC  
Johnson & Johnson Community Health Care Fund of CFNJ  
McKesson Information Solutions, Inc.  
MedAssets Supply Chain Systems  
Medesco, LLC  
Medical Diagnostic Associates, P.A.  
Medtronic USA, Inc.  
Monster Worldwide, Inc. ^  
Morgan Stanley Smith Barney GIFT, Inc.  
Novartis Pharmaceuticals Corporation  
NOVO Nordisk Pharmaceutical Inc.  
Partners HealthCare System  
Penske Corporation  
Pulmonary and Allergy Associates  
Sedgwick LLP  
Summit Medical Group, P. A.  
Weldon Materials, Inc.



## Medical Groups • Corporations • Organizations

### Gifts of \$1,000 - \$4,999

Acasti Pharma, Inc.  
 Advanced Biohealing, Inc.  
 Andersen Interior Contracting, Inc.  
 Axis Point  
 Bard Peripheral Vascular, Inc.  
 Wm. Blanchard Company  
 Bluewater Communications Group, LLC  
 Boehringer Ingelheim Pharmaceuticals  
 Bracco Diagnostics Inc.  
 Burling Charitable Fund  
 Cablevision  
 Canoe Brook Country Club  
 The Cardiovascular Care Group  
 CareOne Management, LLC  
 Carmagnola & Ritardi, LLC  
 CashFlow Solutions, Inc.  
 Celleration, Inc.  
 Christ Church in Short Hills  
 Citigroup Global Impact  
 Funding Trust, Inc.  
 The Community Hospital Group Inc.  
 Covidien  
 Derma Sciences, Inc.  
 Digital Realty Trust  
 DRS Technologies, Inc.  
 Electrocore LLC  
 First Presbyterian Church of Succasunna

Fromkin Brothers, Inc.  
 Genova Diagnostics, Inc.  
 Gibbons  
 The Glenmede Trust Company, N.A.  
 The Glenmede Trust Company  
 H & R Healthcare  
 Harrison Cancer League  
 HB Engineers Inc.  
 HealthPoint  
 Hilltop Community Bank  
 Integra Lifesciences Corporation  
 Intouch Technologies, Inc.  
 Ire Lucas Amul  
 Jackson Lewis, LLP  
 Jespersen & Associates, LLC  
 KCI  
 Korn Ferry International  
 Lebanese American University  
 Livingston Infusion Care  
 Barnabas Health  
 MCS Claim Services, Inc.  
 MDCC, LLC  
 Medivance, Inc.  
 Medline Industries, Inc.  
 Melillo Consulting, Inc.  
 Metagenics  
 Mid-Atlantic Surgical Associates

Molnycke Healthcare  
 The Mount Sinai Medical Center  
 Mushroom Wisdom, Inc.  
 National Financial Services LLC  
 National Football League  
 Net Health Systems, Inc.  
 New Jersey Performing Arts Center  
 New York Jets  
 Next Step Orthopaedics, Inc.  
 NPS Pharmaceuticals, Inc.  
 Organogenesis Corporation  
 Parette Somjen Architects  
 PeachCraft Studios  
 Pediatric Associates of Westfield, P.C.  
 PeJay Creations, Ltd.  
 Pine Grove Associates  
 Point View Financial Services  
 The Presbyterian Church in  
 Westfield New Jersey  
 Prospect Presbyterian Church  
 The Prudential Foundation  
 Raritan Bay Healthcare Foundation  
 River Drive Construction  
 Schenck, Price, Smith & King  
 Seton Hall University School of Law  
 The Society of Mount Carmel  
 Whitefriars Hall

Somerset Cosmetic &  
 Reconstructive Surgery  
 Spectracell Laboratories, Inc.  
 The Stone Financial Group,  
 Incorporated  
 Stryker  
 Jean Sullivan Design  
 Summit Urologic Associates, P.A.  
 Systagenix Wound Management, Inc.  
 Tasters Guild of New Jersey, Inc.  
 TD Bank  
 Toshiba  
 Townsquare Electric, Inc.  
 Triad Isotopes  
 UBS  
 The Unitarian Church in Summit  
 United Way of Morris County  
 United Way of Southeastern  
 Pennsylvania  
 Vista Health System, LLC  
 Wachtell, Lipton, Rosen, & Katz ^  
 Wilson Memorial Union Church  
 Xela Communications  
 Zabransky Mechanical Corporation

### Gifts of \$500 - \$999

Accenture  
 American Gold and  
 Diamond Buyers LLC  
 AngioDynamics  
 AXA Foundation  
 Cardionet, Inc.  
 The Chatham United  
 Methodist Church  
 Citizens for Bassano  
 Colgate-Palmolive Company  
 Cytokinetics, Inc.  
 Eagle Work Clothes  
 Eichen Crutchlow Zaslow &  
 McElroy LLP

EV3 Inc.  
 Faith Lutheran Church  
 Forman & Cardonsky  
 The Garibaldi Group  
 Gastrocare  
 Grace Episcopal Church, Madison  
 Grace Episcopal Church, Plainfield  
 HCSC Incorporated  
 HealthEd Group  
 Information Developers  
 Kessler Rehabilitation Corporation  
 Meridian Hospital Corporation  
 MFS Capital Partners  
 Morrow Memorial United  
 Methodist Church

New Jersey Hospice and  
 Palliative Care Organization  
 New Jersey Hospice and  
 Palliative Care Organization  
 New Providence United  
 Methodist Church  
 Newton Medical Center  
 Overlook Medical Center -  
 Labor and Delivery & Mother/Baby  
 The Phoenix Foundation, Inc.  
 Pilgrim Baptist Church  
 The Road to Recovery Group  
 The Skin and Surgery Center, LLC  
 Stanley Congregational Church  
 Sweetwater Construction Corporation

Teva Neuroscience, inc.  
 Unilever United States  
 Foundation, Inc.  
 United Way of the Greater  
 Lehigh Valley  
 University Physicians Associates of  
 New Jersey  
 Vinchem, Inc.  
 Watchung Pediatrics

^ Donations made solely to the  
 Andy Bovin Memorial Fund

# Honor Roll of Donors

## ■ Foundations



*Maplewood resident Ben Rostan (front, left), with the support of his parents, David and Barbara, and sister Rachel, raised funds for Atlantic Neuroscience Institute at Overlook in preparation for his Bar Mitzvah. Ben chose Overlook as the beneficiary of his community service mitzvah project in part to recognize the exceptional care his aunt received while a patient here.*



*The second-graders at Wyoming Elementary School in Millburn held a read-a-thon in November to raise funds for Overlook's Child Life Program. Spearheaded by teacher Rene Slater (rear, right), the annual event was supported by pledges from family and friends, as well as donations that came directly from some youngsters' own piggy banks.*

### Gifts of \$200,000+

The Nicholas J. and Anna K. Bouras Foundation, Inc.  
The Thomas Glasser Foundation

### Gifts of \$100,000 - \$199,999

The George W. Bauer Family Foundation  
Margaret and Peter Chang Foundation  
The Healthcare Foundation of New Jersey  
F. M. Kirby Foundation  
Metzger Family Foundation  
The New York Community Trust  
The Reeves Foundation  
The T. F. Trust

### Gifts of \$50,000 - \$99,999

Charles Foundation, Inc.  
Mitzi & Warren Eisenberg Family Foundation  
Susan G. Komen for the Cure North Jersey  
Pinkin Foundation, Inc.

### Gifts of \$25,000 - \$49,999

The Robert J. Bauer Family Foundation  
The Frances L. & Edwin L. Cummings  
Memorial Fund  
Driver Family Foundation  
The Hyde and Watson Foundation  
Joy Street Foundation  
The Blanche and Irving Laurie Foundation  
Summit Area Public Foundation  
The Walter and Louise Sutcliffe Foundation  
The Bruce F. Wesson Charitable Foundation  
The Willits Foundation

### Gifts of \$10,000 - \$24,999

E. J. Grassmann Trust  
The Lipper Family Charitable Foundation  
Litterman Family Foundation  
The Ruth and Peter Metz Family Foundation  
The Millar Family Foundation  
The Fred C. Rummel Foundation  
Kenneth B. Schwartz Center  
The Arnold A. Schwartz Foundation  
The Sherlund Family Foundation  
The Henry S. & Agnes M. Truzack Foundation  
Union Foundation  
The Westfield Foundation

### Gifts of \$5,000 - \$9,999

Anonymous (1)  
Delisi Family Foundation  
Gladys and Roland Harriman Foundation  
Anela Kolohe Foundation  
Liam's Room, Inc.  
Elias Sayour Foundation, Inc.  
Standish Foundation  
The Marion and Norman Tanzman  
Charitable Foundation

### Gifts of \$1,000 - \$4,999

Kenneth Aidekman Family Foundation  
David M. and Barbara Baldwin  
Foundation, Inc.  
John P. Bent, Jr. Charitable Lead Unitrust  
Howard S. Bunn Foundation  
The Don Ciardi Memorial Foundation  
Clermont Foundation  
Deeks Family Foundation  
The Fatzler Foundation  
The Gallagher Family Foundation  
The Barbara & Harold Gottesman  
Family Foundation  
Healey Family Foundation  
Thomas S. Henderson and  
Sally S. Henderson Foundation  
Jewish Community Foundation  
The Isabel and David Mahalick  
Foundation, Inc.  
The Manley-Winsor Foundation  
The Jules Podell Foundation  
The Charles L. Read Foundation  
Shallcross Family Foundation  
Morris & Charlotte Tanenbaum  
Family Foundation  
Tom Coughlin Jay Fund Foundation  
James & Virginia Welch Foundation

## Matching Gifts • Bequests

### Matching Gifts

Allstate Giving Campaign  
Alterra  
American Express Foundation  
AON  
Automatic Data Processing, Inc.  
AXA Foundation  
Bank of America  
The Bank of New York Mellon  
Community Partnership  
Bollinger Insurance  
Bristol-Myers Squibb Foundation, Inc.  
The Broadridge Foundation  
Chevron Humankind

The Chubb Corporation  
Colgate-Palmolive Company  
Deutsche Bank Americas Foundation  
ExxonMobil Foundation  
The Arthur J. Gallagher Foundation  
GE Foundation  
Gladys and Roland Harriman Foundation  
IBM International Foundation Matching  
Grants Program  
Johnson & Johnson  
McGraw-Hill Companies  
Merck Company Foundation  
Microsoft Matching Gifts Program

National Football League  
Novartis Pharmaceuticals Corporation  
NPS Pharmaceuticals, Inc.  
Penske Corporation  
Pepsico Foundation  
Pfizer  
The Phoenix Foundation, Inc.  
The Prudential Foundation  
sanofi-aventis  
Toys "R" Us, Inc.  
UBS  
Unilever United States Foundation, Inc.  
Verizon



*Overlook's Kelly Blanchette and Ann Stocknoff (left) and Beth Searing (right) happily accepted in-kind gifts for the Valerie Center from Lisa Hawthorne Smith and Anthony Sichenzio of the Tom Coughlin Jay Fund Foundation. The donations included a laptop computer, iPad, DVD player with 25 DVDs, and a Michaels gift certificate for a few extras to entertain our young patients in the waiting area.*

*Students from Springfield's Turning Pointe Dance Center showcased their talents in the first-ever Variety Show for a Cause, raising funds for the Pediatric Oncology Department at Overlook. Jonathan Dayton High School junior Alexa McCaffrey (center, front) coordinated the show as a project for her Gifted and Talented Seminar.*

### Bequests

Estate of Gertrude E. Aldrich  
Estate of Dorothy M. Bird  
Estate of Lillian Bird  
Estate of Anne H. Bumsted  
Estate of Anna Rose Catelli  
Estate of Marshall J. Hanley, M.D.  
Estate of Hilda G. Keehn  
Estate of Emily Louise D. Lawrence  
Estate of Howard D. McGeorge  
Estate of Louise O'Brien  
Estate of Edgar Reeve  
Estate of Roland D. Roecker, M.D.  
Estate of Blanche P. Zahn



# Honor Roll of Donors

## Employee Support



*Enjoying the Foundation's 21st Annual Golf Tournament at Canoe Brook Country Club were Drs. Andy Kaufman, Ed Zampella, Dan Moriarty and Walter Groff. The largest field of golfers in more than a decade helped raise \$117,000 for the Spine and Concussion Center at Overlook.*

Anonymous (24)  
Dr. Rozana R. Alam  
Mrs. Joseph P. Aliseo  
Ms. Barbara Z. Alleyne  
Dr. and Mrs. Chris Amalfitano  
Ms. Francine C. April  
Laura and Jim Atwell  
Ms. Gertrude Austin  
Dr. Shalini Bansil  
Ms. Stefani A. Banzhaf  
Ms. Patricia W. Barber  
Dr. and Mrs. Jon A. Bartlett  
Ms. Anne Bennett  
Mrs. Theresa Bernaz  
Brian and Andrea Beyerl  
Rev. Frances C. B. Bickerton and  
Dr. Michael Bickerton  
Susan Bien, R.N.  
Peter Bolo, M.D.  
Vera Bondarenko  
Abby and John Boozan  
Jeffrey and Joanne Brensilver  
Ms. Jacquelynn Brodt  
Ms. Marie Bryan  
Rolfe Butler  
Rosa Angelina Cabrera  
Auvril Campbell  
Tessa Campbell  
Violet Campbell  
Gina M. Carro  
Dr. and Mrs. Donald E. Casey Jr.  
Ms. Celeste J. Castle, R.N.  
Mr. and Mrs. Ralph Cattle  
Angelina Cennamo  
Lawrence M. Cennamo  
Central Access Department  
Rosemarie Collingwood-Cole  
and Kenneth Cole  
Mr. and Mrs. Seth E. Colligan  
Thomas Collins  
Mr. and Mrs. Walter Copp  
Dr. Ann C. Cotter  
Alicia R. Cotton  
Ms. Susan J. Craig  
Annamaria (Mary) Damiano

Ms. Catherine David  
Mr. John C. Davidson  
Mr. Ramon N. De Jesus  
Ms. Anne M. Decimus  
Melissa DeFreest  
Nancy and Kevin DeFreest  
Mr. and Mrs. Juan Del Pino  
Donna Delicio  
Kyle Dellomo  
Ms. Kimberly DeLorenzo  
Mrs. Deborah Dente  
Marianne and David Devlin  
Dr. and Mrs. Craig A. Dise  
Margaret J. Dolan  
Dr. and Mrs. Steven Dorsky  
Janet Drewes  
Frances Drigun  
Lucy Duffy  
Mrs. Lauren E. Duggan  
Mark Durante, D.D.S.  
Ms. Rita A. Dyer  
Ms. Norma Egan  
Mr. and Mrs. Jeffrey Egnatovich  
Antonio Elazegui and Family  
Ms. Imaculata Emesue  
Ms. Bettina Eulie  
Ms. Sonnia E. Fenton  
Ms. Barbara Ferguson  
Mrs. Catherine H. Ferrara  
Marian Filipek, Michael Filipek,  
Melissa Filipek  
Kathleen Finan  
Peggy Finkelstein  
Gina Fischbein  
Mrs. Stephen J. Fischl  
Mr. Raymond Fochesto  
Dr. and Mrs. James N. Gardner  
Ms. Giovanna Gherardi  
Mr. Christopher Giangeruso  
Cornelia Gilpin  
Dr. Carl S. Goldstein  
Mr. David Goldstein  
Amy Gole  
Dr. John Gregory Jr.  
Dr. and Mrs. John J. Gregory Sr.

Toula and John Halperin  
Ms. Donna Hansbury  
Mrs. Maryanne B. Healy  
Mr. Richard Heitner  
Mrs. Mary L. Hendricks  
Mrs. Susan H. Henry  
Barbara Ann Herrmann  
Ms. Elizabeth Hogan  
Mark and Amy Holtz  
Rabbi William and Dena Horn  
Kristen Houghton  
Ms. Mary Hurley  
Mr. Dennis C. Hynes  
Mr. and Mrs. Mark A. Jannone  
Ms. Maryanne Joachim  
Ingrid Johnson Hayward  
Jody Kaar, R.N.  
Mrs. Neeraja and Hemant Kairam  
Mr. John Kalynovych  
Robert Karp, M.D.  
Dr. Susan T. Kaye  
Sharon Kelly  
Mr. and Mrs. Joel Kerwin  
Neil Kramer, M.D.  
Dr. and Mrs. Roger M. Kurlan  
Michael Laterra  
Mrs. Madonna M. Lee  
Drs. Rachel R. and Tonel Leibur  
Mr. and Mrs. Kevin Lenahan  
Alan Lieber and Alice Heffner  
Ms. Karen Lieberman  
Norman and Kristina Luka  
Mrs. Kathleen A. Lynch, R.N.  
Ms. Rita M. Lynch  
Mr. and Ms. Vincent Macaulay Savioli  
Mr. Kemsey J. Mackey  
Gad Magdieli PT  
Janet A. Magee  
Gerard Malanga, M.D. and Family  
Dr. and Mrs. Marc S. Mandel  
Mr. Paul F. Marmor  
Drs. Heidi and William Matuozzi  
Christina Maund  
Filomena Mazzone  
Mr. and Mrs. William E. McAlvanah

Tim and Lorie McDonald  
 Susan Q. McDonald, R.N.  
 Patsy and Danny L. McDuffie  
 Mrs. Ashley R. McEnroe  
 Cheryl and Frank McKenna Jr.  
 G. W. McMahon  
 Susan E. Mead  
 Mrs. Margaret E. Meade  
 Mrs. Mary P. Melega  
 Ms. Lesley A. Meyer  
 Karen A. Miceli  
 Salvatore J. Milone  
 Elizabeth Mirbach  
 Joanne Mitchel  
 Raymond Monahan  
 Jacqueline Mooney, R.N.  
 Ms. Teresa G. Morano  
 Ms. Harriet J. Murdock  
 Ms. Cynthia Myers  
 Lydia Nadeau  
 Dr. Lawrence J. Nastro  
 Eileen and Jeff Newman  
 Dr. Eberechi I. Nwaobasi-Iwuh  
 Jim and Doreen O'Boyle  
 Ms. Pamela Dorcie Ogens  
 Sheilah O'Halloran  
 Ann M. Oliva  
 Michael S. Overa  
 Overlook Employee Basket Auction  
 Overlook Employee Uniform Sale  
 Overlook Medical Center Engineering  
 Department  
 Joyce and Mark Passen  
 Mr. and Mrs. Robert L. Peake  
 Paul C. Pennella, R.N.  
 Haydee S. Perez  
 Dr. Samantha B. Pozner  
 Ms. Doriann Prasek  
 Linda and Leonard Reed  
 Ms. Patricia Regenberg  
 Dr. and Mrs. Robert A. Restifo  
 Dr. Nina and Mr. Carl Reynolds  
 Katherine Rhodes  
 Dr. Sheryl Leff-Ring and  
 Dr. Kenneth S. Ring



*In recognition of her exceptional compassion and expertise in delivering patient care, Breast Center Patient Navigator Jasmin Torres (center) was honored through the Foundation's Gifts of Gratitude program. On either side of Jasmin are Michael Rokhsar, M.D. and Lisa Cuoco, R.N., along with many of her colleagues from the Breast Center.*

Marie Roberti  
 Dr. and Mrs. Michael and  
 Stacey Rokhsar  
 Mr. John F. Rosellini Jr.  
 Elliot D. Rosenstein, M.D.  
 Susan and Joel Rosh, MD  
 Jane and David Rubin  
 Sal and Charlene Ruggiero  
 Mrs. Angela M. Ryan  
 Drs. Cathy and Clifford Sales  
 Mr. Michael G. Samuelson  
 Amber Santangelo  
 Dr. David P. Saur and  
 Ms. Gerri McCann  
 Ms. Jennifer Scatcherd  
 Ms. Martha Schinbeckler  
 Mrs. Victoria M. Schmidt  
 Diane M. Schneider, R.N.  
 Mary and Kurt Schoenberg  
 Louis E. Schwartz, M.D.

Lisbeth Searing  
 Dr. and Mrs. Steven J. Sheris  
 Janis Simberg  
 Ms. Jo-Ann Simon  
 Carol J. Smith RNC Nurse Manager  
 Ms. Olive Smith  
 Mr. Waldemore Smith  
 Ms. Beverly Sonnenberg  
 Dr. and Mrs. Richard Stabile  
 Dr. and Mrs. Paul Starker  
 Ms. Bernadette Stemcovski  
 MaryPat Sullivan  
 Rochelle L. Sullivan  
 Dr. and Mrs. Robert Sussman  
 Matthew Szewczyk  
 Susan M. Thomas  
 Karina Torres  
 Dr. and Mrs. Joseph Tribuna  
 Joseph A. Trunfio  
 Dr. and Mrs. Dennis Turner

Mrs. Lynn K. Turner  
 Glory Veluz  
 Ms. Deena E. Vicendese  
 Charles G. and Gail V. Walker  
 Ms. Judith A. Wall  
 Rosemary Walsh  
 Lynn and Roy Weiss  
 Eric P. Westbrook  
 Ms. Anita Whalen  
 Daniel P. Whelan  
 Dr. Mark D. Widmann and  
 Ms. Kim S. Hirsh  
 Connie Frank Williams  
 Ms. Alice Win  
 Kathleen and Charles Wirry  
 Mr. Thomas Woodard  
 Dr. and Mrs. David A. Worth  
 Dr. and Mrs. Edward Zampella  
 Mr. and Mrs. Anthony Zotte III  
 Dr. and Mrs. Paul Zukoff

# Special Thanks to the Overlook Auxiliary



*In the kitchen of Summit Mayor Ellen Dickson (center), one of several featured on the Auxiliary's 2011 Kitchen Tour, are event Co-Chairs Meredith Guida and Anne St. Clair, and Auxiliary Co-Presidents Peggy Schreck and Elsa Russell.*

Since 1916, the Overlook Auxiliary – an independent non-profit organization – has supported Overlook Medical Center through hands-on volunteer support and a wide range of fundraising activities. This year the group debuted a new logo, featuring a contemporary look and colors reflective of the hospital's new name and logo. What hasn't changed is the enthusiasm of the nearly 400 auxiliaries – men and women of all ages – who volunteer their time, either as individuals or as members of one of 20 Twigs, many of which sponsor their own fundraising initiatives on behalf of Overlook.

Overlook's Gift Shop and Bloom, located in the main lobby, is largely staffed by Auxiliary volunteers and is considered a premier gift and flower shop by patients, staff and the local community. Known for its unique array of gifts, accessories and creative floral arrangements, the Gift Shop and Bloom generated \$508,132 in sales last year, which was donated to the medical center.

In 2011, the Overlook Auxiliary Executive Board approved the donation of \$223,531 to Overlook Medical Center. This contribution helped fund

the purchase of monitors for the Neuro Intensive Care Unit, equipment for the cardiac telemetry, maternity and intensive care units, endowments for Camp Clover, a pediatric palliative care workshop and more.

As always, the Twigs were busy raising funds for many causes, including the Valerie Center and Camp Clover, a free bereavement day camp in Flanders for children ages seven through 15 who have lost a loved one. Thanks to the fundraising efforts of Summit Twig #5, 47 children from four counties came together to enjoy camp activities and bond with each other during a week in August at Camp Clover.

In early May, members of Summit Twig #4 celebrated the season with a Cinco de Mayo-themed party hosted by Twig #4 member Katrina Walsh and her husband, Matt, at their Summit home. The event was attended by more than 100 people and over \$5,000 was raised for ovarian cancer research.

More than 150 guests attended the Auxiliary's annual Spring Luncheon on May 13 at Baltusrol Golf Club to hear guest speaker Amalia Gomez

of Summit discuss the creation of “Flipbag,” a reversible, hands-free handbag that is now a hot product with a celebrity following.

Throughout the summer, event Co-Chairs Anne St. Clair and Meredith Guida mobilized a team of some 100 dedicated volunteers for the Auxiliary’s biennial Kitchen Tour. Held October 20, the tour featured seven of the area’s fabulous kitchens and raised \$31,529 for ovarian cancer research thanks in part to a successful ad journal and sponsorships by Lois Schneider Realtor and Bouras Properties

On September 12, the Overlook Auxiliary dedicated the newly refurbished third-floor Oncology Solarium for which it had donated \$25,000. Auxiliary board member Marilyn Chambeau and interior designer Donna Donaldson oversaw the transformation of the warm, comfortable space with its stunning panoramic views.

**“Since 1916, the Overlook Auxiliary has supported Overlook Medical Center through hands-on volunteer support and a wide range of fundraising activities.”**

The Auxiliary supports many important medical center related programs including child life, hospice/homecare, oncology center, palliative care, pastoral care, and social services. It also funds several nursing scholarships for deserving candidates on an annual basis and has contributed funding for several large building projects such as the new Caregivers Center, the Emergency Department and the Pediatric Playroom.

None of this would be possible without the heartfelt dedication of some very caring auxiliarians and volunteers, some of whom are affiliated with Summit Twig #1. After sixteen years of service, an incredible journey has come to an end for Summit Twig #1 - Donate Life. Led by Lenore Ford, their work on behalf of Organ Donor Awareness is unparalleled and their mission will continue through the Sharing Network – the state’s organ procurement organization headquartered in New Providence.

At Overlook Medical Center, volunteers are partners in the care of our patients, visitors and employees. Over 900 strong, they are the heart of Overlook, coming regularly to fill their shift as unpaid staff. Each shares in our success and contributes to the quality of the care Overlook provides.



*Enjoying their Second Annual Wine Tasting with sommelier Nadja Frederick (third from right) are members of Chatham Twig #15: Jen Kulp, Ann Caruso, Nancy Cook, Jessie Larson, Krista Cacacciola, hostess Melissa Evans, Michelle McDermott and Lynne Skajaa.*



*Lenore Ford (center) hosted a farewell luncheon in June for her fellow Summit Twig #1 members. The group’s work will continue under the auspices of the NJ Sharing Network, whose mission is to save lives through organ and tissue donation.*

**If you would like to enhance the experience of our patients, visitors and staff through a kind word or a warm smile, call the Overlook Auxiliary at (908) 522-2004 or visit [www.oaux.org](http://www.oaux.org). There is a volunteer opportunity and a Twig to match everyone’s interest.**

# Giving at a Glance

## The Overlook Foundation

The Overlook Foundation raises funds that are used to purchase state-of-the-art equipment and fund special programs to help Overlook Medical Center remain in the forefront of medical care.

If you would like to become a member of the "Overlook Medical Center Family" by supporting the foundation, you may

- Become a "Friend of Overlook Medical Center" with an annual gift of \$100 or more;
- Designate your gift for a restricted or specific project or allow the foundation's board of trustees to determine the most needed application of your donation;
- Make a donation to memorialize or commemorate an individual, family or group;
- Make a planned or deferred gift to maximize tax advantages and/or protect current or future income, thereby becoming a member of the Heritage Society.

All Overlook Foundation gifts are tax deductible and remain at Overlook.

For more information about how you can help further Overlook's mission to provide exemplary health care services to its communities, please contact:

The Overlook Foundation  
36 Upper Overlook Road, P. O. Box 220  
Summit, NJ 07902-0220  
(908) 522-2840



*Overlook Foundation Staff*

## Giving at a Glance • July 2010 through June 2011

Total **\$5,680,024** Restricted Gifts for Capital & Program **\$4,153,781**  
Unrestricted Annual Support **\$1,495,051** Honorary & Memorial Gifts **\$31,192**



# Centennial Celebration

## Donors Celebrate Completion of \$110 Million Campaign

When Overlook Hospital celebrated its centennial in 2006, the Overlook Foundation marked the occasion by launching a \$100 million effort – *The Next Century of Healing: The Centennial Campaign for Overlook*.

Today, Overlook Medical Center has been transformed by the \$110 million raised through the exceptional generosity of individuals, companies, foundations, hospital leaders, physicians, employees, and community organizations. In all, 9,839 donors from 1,104 towns in 46 states contributed to the campaign, illustrating the broad range of Overlook's reach.

Thanks to these gifts, Overlook now has

- the Breast Center at Overlook;
- the largest adolescent eating disorders program in the state, one that has tripled in size in the last three years;
- the J. E. Reeves chair of medicine endowment;
- the Thomas Glasser Caregivers Center and the Thomas Glasser Board Room;
- the Schlesinger Initiative in Integrative Medicine for our oncology and neuroscience patients;
- the Jane W. and F. Chandler Coddington Jr. Patient Care Unit;
- a remodeled and updated Meri and Sol Barer Pediatric Unit;
- Liam's Room for chronically or terminally ill children and their families;
- the new lobby and Centennial Life Garden in front of the hospital; and
- other endowments, programs and improvements that are enhancing the quality of patient care throughout the hospital.

In addition, \$41.4 million was contributed by Overlook's nonprofit parent to fulfill its promise to match, dollar for dollar, every gift given for construction or capital equipment purchases. This commitment has enabled Overlook to build and equip the Carol G. Simon Cancer Center at Overlook and the Women's Health Center.

Other projects and purchases funded in part by Atlantic Health's match include

- new or renovated units on three floors;
- a second neurointerventional biplane suite;
- the 320-slice CT scanner;
- the da Vinci surgical robotic system;
- an endoscopic suite for the latest treatment of digestive disorders;
- a linear accelerator for radiation treatments; and
- the pediatric ambulatory care center.



*Gathering with more than 150 donors last fall to celebrate the close of the campaign: Centennial Campaign Chair and Foundation Trustee David Hartman, Overlook Medical Center President Alan Lieber, Overlook Foundation Executive Director Ann Oliva, Honorary Campaign Chair Thomas H. Kean, Overlook Foundation Chair Steve Stone, and Atlantic Health President and CEO Joseph Trunfio.*



# Overlook at a Glance

Part of Atlantic Health System, Overlook Medical Center is a 504-bed, nonprofit regional medical center with more than 1,300 attending physicians and medical residents and over 3,400 employees. Located in Summit, New Jersey, Overlook was founded in 1906 by Dr. William H. Lawrence Jr.

Now in its second century of healing, the medical center has a long history of providing primary health services in the community and is increasingly active in organizing and funding numerous health promotion and quality-of-life activities. Classes, support groups, and screenings – many of which are free of charge – are offered year-round. Our Healthy Avenues Van provides health care information and screenings for symptoms of diabetes, stroke, high blood pressure, colorectal disease and various cancers to residents of 24 surrounding communities.



## Overlook Medical Center

- Accredited by The Joint Commission, reflecting our commitment to meeting the highest performance standards
- Primary academic and clinical affiliate in New Jersey of Mount Sinai School of Medicine and The Mount Sinai Hospital
- Best Regional Hospital in four specialties: gastroenterology, geriatrics, nephrology and urology (U.S. News & World Report, 2011-12)
- National Medal of Honor for Organ Donation (US Department of Health and Human Services)
- Access to Quality of Care Award (New Jersey Hospital Association)

## Atlantic Neuroscience Institute at Overlook

- Ranked #1 for the Treatment of Neurological Disorders and #2 for Stroke Treatment in New Jersey (*Inside Jersey* magazine poll in partnership with Castle Connolly Medical Ltd.)
- **Stroke Center**
  - First Comprehensive Stroke Center in New Jersey (New Jersey Department of Health and Senior Services)
  - Stroke Care Certification/Gold Seal of Approval™ for Primary Stroke Centers (The Joint Commission)
  - Get With the Guidelines® Stroke Gold Plus Performance Achievement Award (American Heart Association and American Stroke Association)
  - Primary referral center for 46 percent of New Jersey hospitals
- **Epilepsy Center**
  - One of two centers in New Jersey designated a Level 4 Epilepsy Center
  - First center in New Jersey – and one of only a few in the country – to evaluate epilepsy patients using magnetoencephalography (MEG)

## The Carol G. Simon Cancer Center

- Major clinical research affiliate of The Cancer Institute of New Jersey
- Outstanding Achievement Award and Three Year Approval with Commendation (American College of Surgeons' Commission on Cancer)

2011 Operating Statistics

admissions	25,177	births	2,328	emergency department visits	88,334
------------	--------	--------	-------	-----------------------------	--------

## The Breast Center

- Breast Imaging Center of Excellence (American College of Radiology)
- Outreach Award from BMW and Susan B. Komen Foundation

## The Thomas Glasser Caregivers Center

- First hospital-based center in New Jersey dedicated to the needs of caregivers of loved ones with extended hospital stays

## The Institute for Rheumatic and Autoimmune Diseases at Overlook Medical Center

- The only hospital-based institute of its kind in New Jersey

## Gagnon Cardiovascular Institute at Overlook

- Elective Angioplasty C-PORT E Trial (New Jersey Department of Health and Senior Services)
- Cardiac Rehabilitation Center Accreditation (American Association of Cardiovascular and Pulmonary Rehabilitation)
- Vascular Laboratory Accreditation (Centers for Medicare and Medicaid Services and Intersocietal Commission for the Accreditation of Vascular Laboratories)
- Echocardiography Laboratory Accreditation (Intersocietal Commission for the Accreditation of Echocardiography Laboratories)

## Maternity Services

- Level III Intensive Perinatal Unit (New Jersey Department of Health and Senior Services)
- Care Award (International Lactation Consultant Association)

## Atlantic Health System Weight & Wellness Center

- Center of Excellence in Bariatric Surgery (American Society for Metabolic and Bariatric Surgery)

## Center for Sleep Medicine

- Accreditation by The American Academy of Sleep Medicine

## Orthopedics

- Gold Seal of Approval™ - Cervical Spine Treatment Certification and Lumbar Spine Treatment Certification (The Joint Commission)

## Emergency Department, Union

- Lantern Award (Emergency Nurses Association)

## Women's Heart Awareness Program

- Circle of Excellence Award (American Association of Critical Care Nurses)

## Wound Healing Program

- Accreditation (Undersea & Hyperbaric Medicine Society)
- Gold Seal of Approval™ Disease-Specific Care Certification (The Joint Commission)

## The Eating Disorders Program at Goryeb Children's Hospital

- The only eating disorders program in the state to provide comprehensive treatment exclusively for adolescent patients between the ages of 12-21 as both inpatients and outpatients.

## Atlantic Health

- Selected by *Fortune*® magazine for the fourth year in a row as one of the 100 Best Companies to Work For®.
- Selected for the fifth consecutive time by AARP as one of the nation's Best Employers for Workers Over 50.

average length of stay **4.68 days** same day surgical procedures **9,809** inpatient surgeries **5,911** outpatient visits **203,774**

# Leadership

## Foundation Board of Trustees

Stephen B. Stone  
*Chair*

J. Scott Magrane  
*Vice Chair*

Luke M. Beshar  
*Treasurer*

Michael Gambro, Esq.  
*Secretary*

Anne S. Babineau, Esq.  
Meri Barer

Clelia Biamonti, Ph.D.  
Mary Angus Bushnell  
Sal Caruana

Sarah Q. Christensen  
Elizabeth Compton  
John W. Cooper, Esq.  
Shannon Cross

Barbara Daney  
Philip Davies, Ph.D.

David G. Dietze  
Timothy J. Erday

Gerald J. Glasser, Ph.D.  
Baxter W. Graham

Richard C. Griggs  
Pamela Gumpport

Lee M. Hale  
Maggie Hariri

David G. Hartman  
Charles E. LaRosa

Alan Lieber  
Jack S. Mann

Gale D. Metzger  
Tracy McKee

Harold Morrison  
Roy E. Naturman, M.D.

Richard S. Nitzberg, M.D.  
James E. Pinkin

Laurence S. Rickles, Esq.  
Clifford M. Sales, M.D.

Brent Saunders  
Daniel N. Schildge

Steven A. Schlesinger  
Eric J. Shick

Michael Tanenbaum, Esq.  
Melissa Tassé, Ph.D.

John F. Vigorita, M.D.  
Joshua A. Weinreich

## Foundation Administration

Ann M. Oliva  
*Executive Director*

Kenneth D. Cole  
*Senior Director, Planned Giving & Capital Campaigns*

Laura K. Atwell  
*Director, Major Gifts*

Marianne F. Devlin  
*Director, Special Events & Publications*

Lorie S. McDonald  
*Director, Donor Relations & Stewardship*

Beth M. Searing  
*Director, Corporate & Foundation Relations*

Connie F. Williams  
*Director, Annual Giving*

## Overlook Medical Center Advisory Board

Robert Mulcahy III  
*Chair*

Rev. Ronald Allen Sr.  
Dora E. Arias

Jon Bartlett, D.D.S.  
Mary Lou Carter

Chris Cotter  
James R. Coyle

Robert E. Dillon Jr.  
Rosalind S. Dorlen, Psy.D.

Jacqueline Esquivel  
Mary Esquivel

Roger E. Flax, Ph.D.  
Thomas Greig

Mark Holtz  
Neil B. Horner, M.D.

Alan Lieber

Jerrold Lozner, M.D.

Norman L. Luka, M.D.

Ralph J. Marra Jr.

John R. Mulcahy

Roy Naturman, M.D.

Robert I. Oberhand, M.D.

Jeffrey S. Peris, Ph.D.

Elsa Russell

R. Gregory Sachs, M.D.

Peggy Schreck

Joseph Starkey, M.D.

Stephen B. Stone

Robert Sussman, M.D.

Joseph A. Trunfio, Ph.D.

Theresa C. Turko

Vincent P. Ursino Sr.

John Vigorita, M.D.

Allan L. Weisberg

## Atlantic Health Leadership

Joseph A. Trunfio, Ph.D.  
*President/Chief Executive Officer*

Donald Casey, M.D., M.B.A., M.P.H., F.A.C.P.  
*Vice President, Quality & Chief Medical Officer,  
Chief Research Officer & Academic Officer*

Madeline Ferraro  
*Vice President, Government & Public Affairs*

Andrew L. Kovach  
*Vice President, Human Resources &  
Chief Administrative Officer*

Kevin Lenahan  
*Vice President, Finance &  
Chief Financial Officer*

Alan Lieber  
*Vice President & President,  
Overlook Medical Center*

Sheilah O'Halloran  
*Acting General Counsel*

Linda Reed  
*Vice President, Information Systems &  
Chief Information Officer*

Thomas Senker  
*Vice President & President,  
Newton Medical Center*

David J. Shulkin, M.D.  
*Vice President & President,  
Morristown Medical Center*

## Auxiliary Executive Board

Elsa Russell, Co-President  
Peggy Schreck, Co-President  
Marilyn Chambeau  
Cindy Hurley  
Susan Cagnassola  
Terry Andrews

## Medical Staff Executive Committee

Robert Sussman, M.D.  
*President*  
James Gardner, M.D.  
*Vice President*  
Clifford Sales, M.D.  
*Treasurer*  
Christopher Amalfitano, M.D.  
*Secretary*

Peter Bolo, M.D.  
Jeffrey Brensilver, M.D.  
Kevin Corry, D.D.S.  
Vivian Chou, M.D.  
Craig Dise, M.D., Ph.D.  
Robert Fuhrman, M.D.  
John Halperin, M.D.  
Hemant Kairam, M.D.  
Susan Kaye, M.D.  
John Knightly, M.D.  
Yong Kwon, M.D.  
H. Terrence Lee, M.D.  
Marc Mandel, M.D.  
Paul Mastrokyriakos, D.O.  
Samir Patel, M.D.  
Kanan Patrawalla, M.D.  
Samantha Pozner, M.D.  
Joseph Ramieri, M.D.  
Michael Rokhsar, D.O.  
Walter Rosenfeld, M.D.  
Paul Starker, M.D.  
Mary Pat Sullivan, R.N.  
Paul Zukoff, M.D.



## Overlook Medical Center Administration

Alan Lieber  
*President*

Mark Holtz  
*Chief Operating Officer*

Mary Patricia Sullivan, R.N., MSN, CNS  
*Chief Nursing Officer*

Debbie Dente  
*Director, Fiscal Services*

Fran Drigun  
*Director, Women's & Children's Services*

Norman L. Luka, M.D.  
*Medical Director, Clinical Affairs*

Kem Mackey  
*Director, Behavioral Health*

Tina Maund  
*Director, Performance Improvement*

Lydia Nadeau  
*Director, Oncology Service Line*

William Neate  
*Director, Cardiovascular Services*

Michael Overa  
*Director, Laboratory Services*

Robert Peake  
*Director, Facilities Construction*

John Rosellini  
*Director, Business Development & Physician Relations*

Jane Rubin  
*Director, Neuroscience Services*

Lynn Turner  
*Director, Human Resources & Organization Development*

Michael Samuelson  
*Director, Marketing & Public Relations*

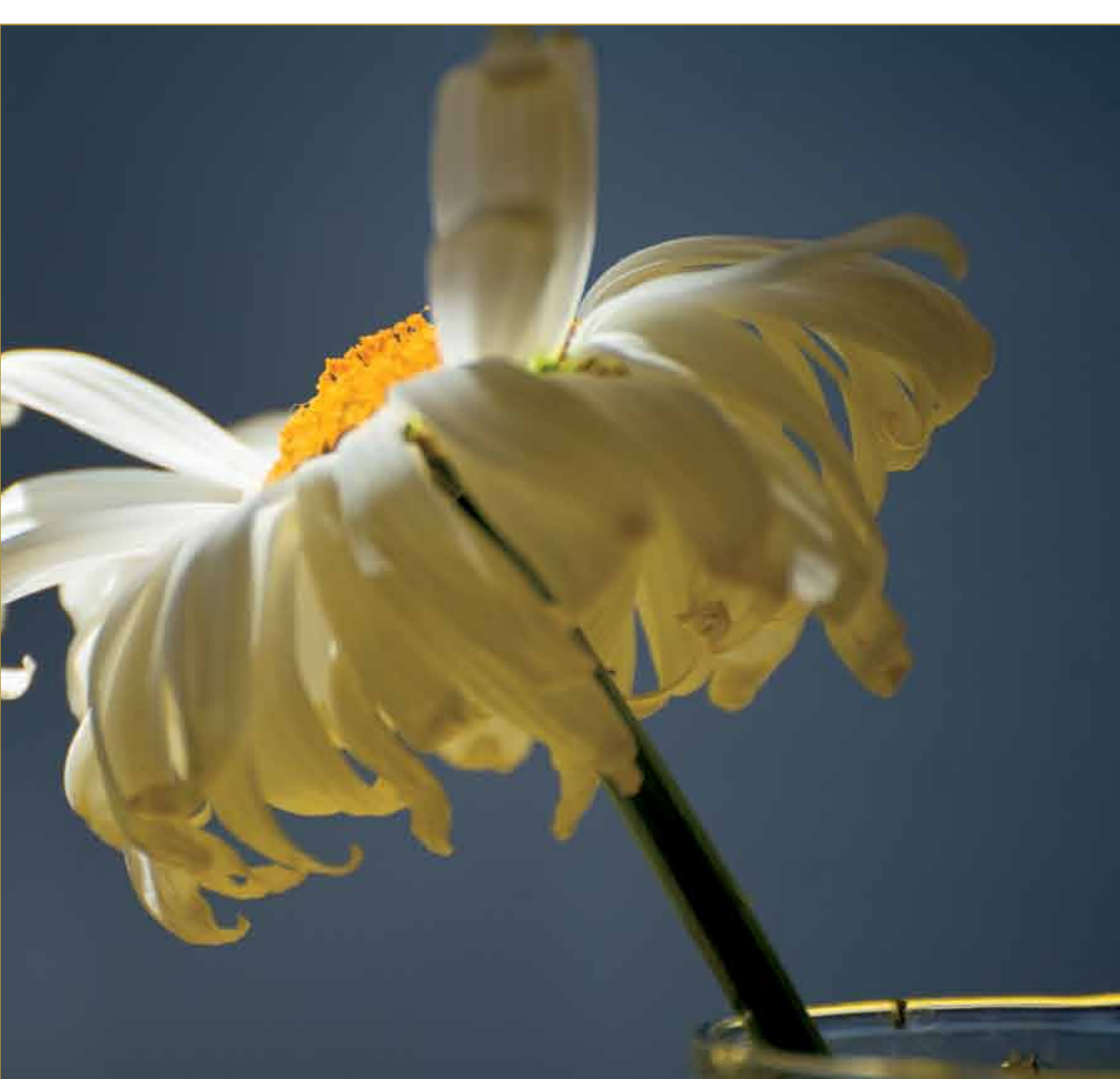
Gary Walker  
*Director, Operations*

## ■ Friends Remembered

Since our last report, we have lost several beloved members of the Overlook Foundation family. We recognize their special contributions to Overlook and to our community, and we extend our heartfelt wishes to their families.

**Yale S. Arkel, M.D.**  
**Anthony M. Bebbino, M.D.**  
**Ruth Bovin**  
**Mary Burke**  
**Grant M. Buttermore**  
**Margaret C. Clare**  
**Kevin A. DeFreest**  
**Carolyn English**  
**Clemente L. Facchinei**  
**Phyllis E. Florian**  
**Barbara F. Grove**  
**James Itzcovitz, M.D.**  
**Dorothy Ivory**  
**Joel D. Levinson**  
**Walter D. Long**  
**Kathryn Montag**  
**Malcolm B. Niedner**  
**Edward M. Olesky**  
**Morton Perkoff**  
**Joshua A. Plaut**  
**Michael C. Romano**  
**Mary Lou Roux**  
**Frank B. Stone**  
**George W. Sullivan**  
**Marja-Lou Swan**  
**James W. Taylor**  
**Risa N. Walsh**  
**Carolyn B. Wood**





# OVERLOOK FOUNDATION

---

36 Upper Overlook Road • P.O. Box 220  
Summit, New Jersey • 07902-0220